



# Fellows Road

## Swiss Cottage, NW3

£2,400 per month  
(£553.85 per week)

\*VIDEO TOUR AVAILABLE\* A delightful apartment on the upper floor of this period building situated in an excellent location within walking distance to Swiss Cottage (Jubilee Line). Accommodation comprises reception room, kitchen, double bedroom, bathroom.



# Fellows Road

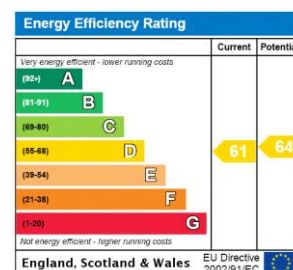
## Swiss Cottage, NW3

- A Delightful Apartment on the Upper Floor of this Period Building
- 1 Bedroom, 1 Bathroom, Reception, Kitchen
- Situated in an Excellent Location Within Walking Distance to Swiss Cottage (Jubilee Line)





**Minimum Term:** 12 months  
**Deposit Required:** £2,769.23  
**Local Authority:** London Borough Of Camden  
**Council Tax Band:** E  
**EPC Rating:** D  
**Unfurnished**

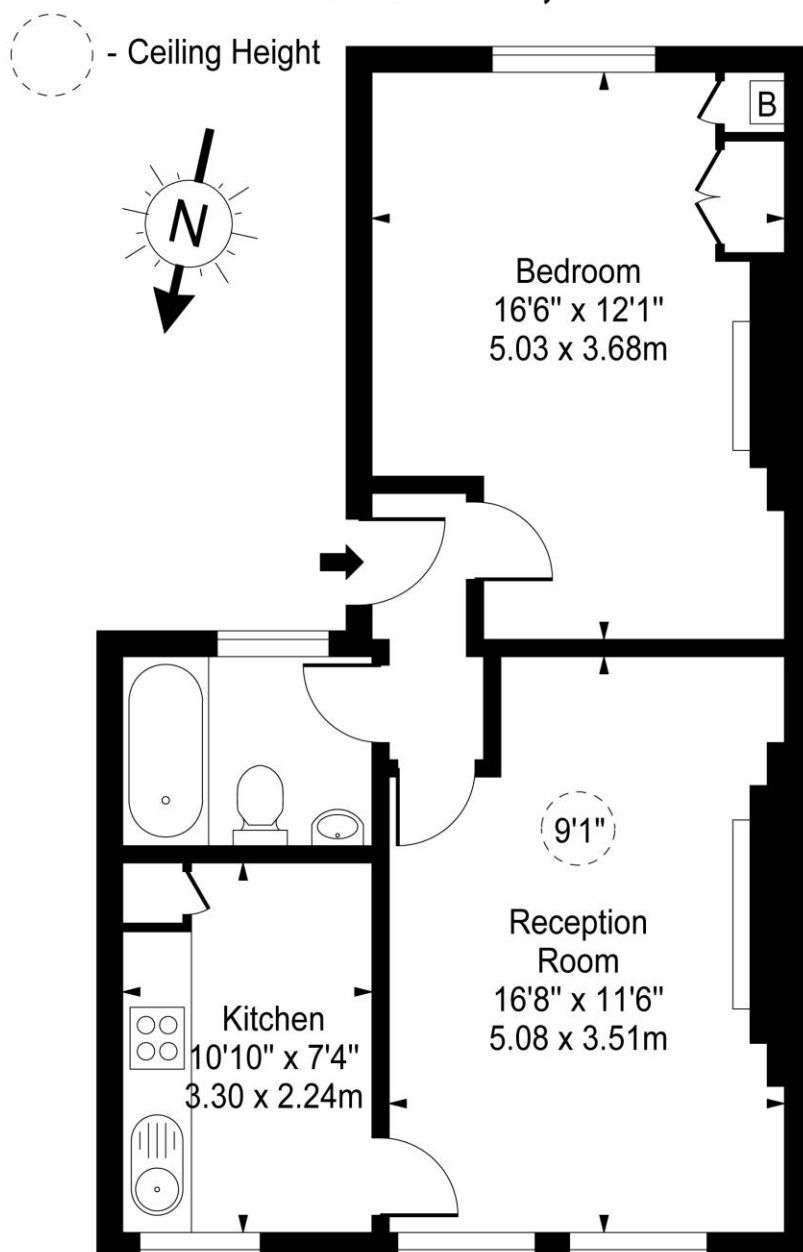


### Chestertons Hampstead Lettings

55-56 Hampstead High Street  
 Hampstead  
 London  
 NW3 1QH  
[hampsteadlettingsusers@chestertons.co.uk](mailto:hampsteadlettingsusers@chestertons.co.uk)  
 02077941125  
[chestertons.co.uk](http://chestertons.co.uk)

Additional tenant charges apply (fees apply to non-AST tenancies only)  
 Tenancy Agreement Fee: £300  
 References per Tenant/Guarantor: £60  
 Inventory check (approx. £100 – £250 inc. VAT)  
[chestertons.co.uk/property-to-rent/applicable-fees](http://chestertons.co.uk/property-to-rent/applicable-fees)

## Fellows Road, NW3



### Second Floor

**Approx Gross Internal Area    528 Sq Ft - 49.05 Sq M**

For Illustration Purposes Only - Not To Scale

[www.goldlens.co.uk](http://www.goldlens.co.uk)

Prepared for Chestertons

Ref. No. 011120J

