



Streatley Place

Hampstead, NW3

£5,750 per month
(£1,326.92 per week)

A delightful 3 bedroom house set over 3 floors situated in the heart of Hampstead and within walking distance to all the shopping amenities of Hampstead Village. The property has the benefit of a patio, secure off street parking and use of a private gym, bicycle storage. Accommodation comprises reception room, fully fitted kitchen, master bedroom with en-suite bathroom, 2 further bedrooms, family bathroom.



Streatley Place

Hampstead, NW3

- A Delightful Terraced House Over 3 Floors
- 3 Bedrooms, 2 Bathrooms, Reception, Kitchen
- Secure Off Street Parking, Patio, Use of Private Gym, Bicycle Storage
- Situated in Quiet Location in the Heart of Hampstead Village



Minimum Term: 12 months
Deposit Required: £7,961.54
Local Authority: London Borough Of Camden
Council Tax Band: G
EPC Rating: C
Unfurnished

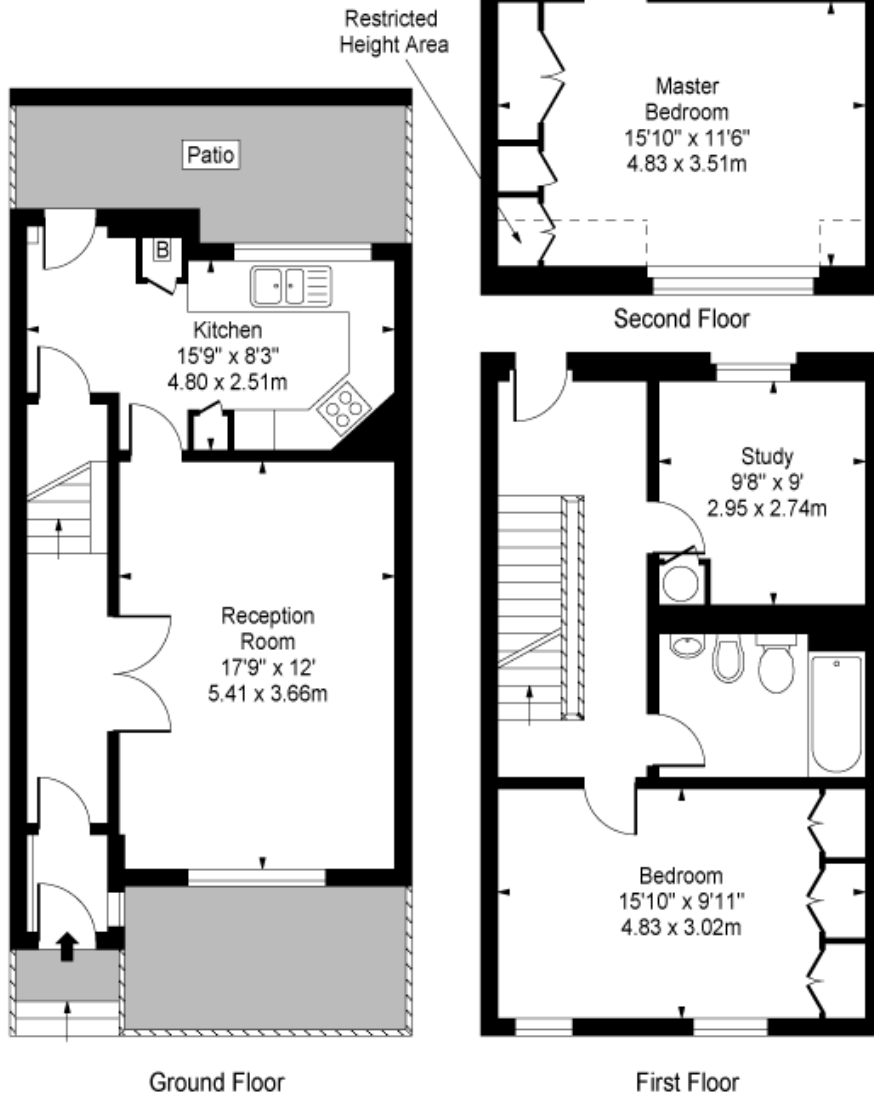
Energy Efficiency Rating		
	Current	Potential
Very energy efficient - lower running costs		
A (94-100)		
B (81-93)		
C (69-80)		
D (55-68)		
E (39-54)		
F (21-38)		
G (1-20)		
Not energy efficient - higher running costs		
	72	84
England, Scotland & Wales EU Directive 2002/91/EC		

Chestertons Hampstead Lettings

55-56 Hampstead High Street
Hampstead
London
NW3 1QH
hampstead@chestertons.co.uk
02077941125
chestertons.co.uk

Additional tenant charges apply (fees apply to non-AST tenancies only)
Tenancy Agreement Fee: £300
References per Tenant/Guarantor: £60
Inventory check (approx. £100 – £250 inc. VAT)
chestertons.co.uk/property-to-rent/applicable-fees

Streatley Place, NW3



Approx Gross Internal Area 1260 Sq Ft - 117.05 Sq M
(Including Restricted Height Area)

For Illustration Purposes Only - Not To Scale

www.goldlens.co.uk

Prepared for Chestertons

Ref. No. 001707

