



# Thurlow Road

## Hampstead, NW3

£4,116.67 per month  
(£950 per week)

A highly refurbished 2 double bedroom raised ground floor apartment boasting period features, large sash windows, exceptionally high ceilings and smart terrace, off street parking for 1 car. The property is situated in this semi detached period building in one of the most desirable residential roads in Hampstead. Accommodation comprises large entrance hall, grand drawing room with ornamental fire place, modern fitted kitchen, master bedroom, further double bedroom, family bathroom, ultra modern wet room.



# Thurlow Road

## Hampstead, NW3

- A Magnificent Raised Ground Floor Apartment in Period Building
- 2 Bedrooms, 2 Bathrooms, Reception, Kitchen
- Decked Terrace, Off Street Parking, High Ceilings, Many Period Features
- Situated in One of Hampstead's Premier Roads in Hampstead





**Minimum Term:** 12 months  
**Deposit Required:** £5,700.00  
**Local Authority:** London Borough Of Camden  
**Council Tax Band:** E  
**EPC Rating:** D  
**Unfurnished**

Energy Efficiency Rating		
	Current	Potential
Very energy efficient - lower running costs		
A (94-100)		
B (81-93)		
C (69-80)	75	81
D (55-68)		
E (39-54)		
F (21-38)		
G (1-20)		
Not energy efficient - higher running costs		
England, Scotland & Wales EU Directive 2002/91/EC		

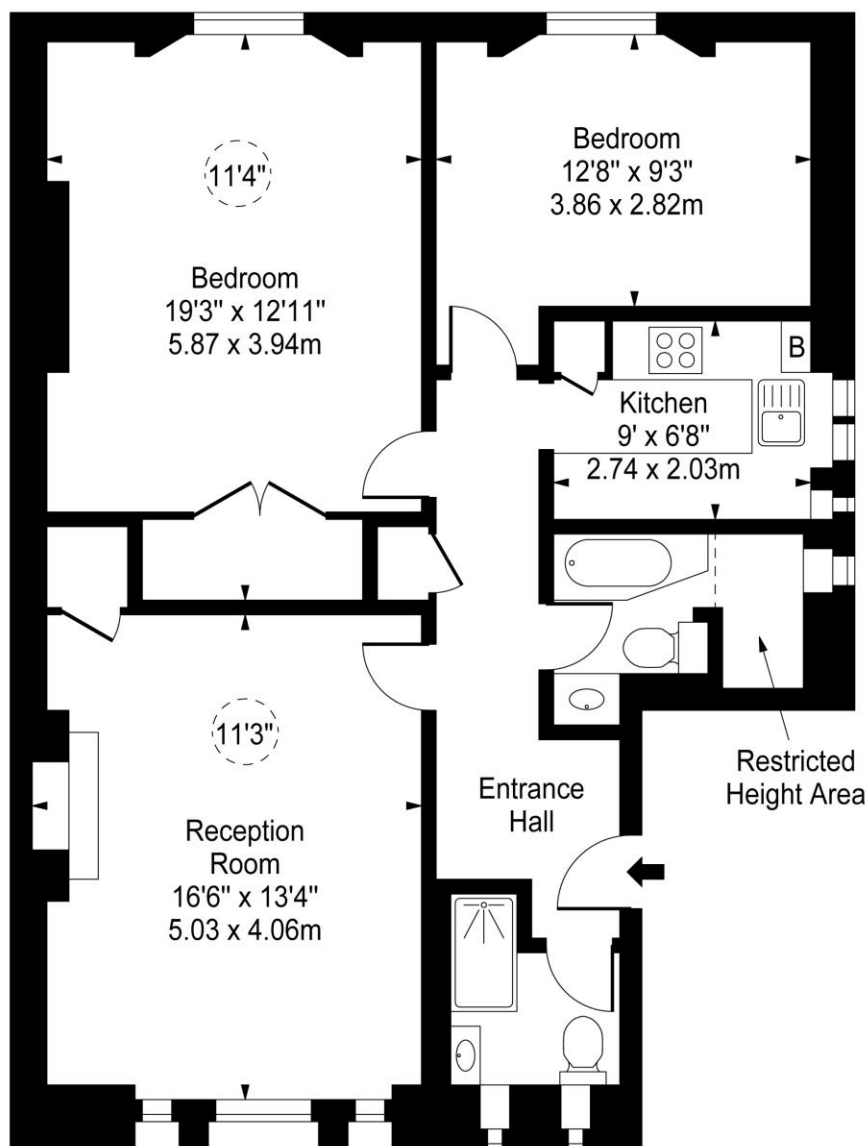
### Chestertons Hampstead Lettings

55-56 Hampstead High Street  
 Hampstead  
 London  
 NW3 1QH  
[hampstead@chestertons.co.uk](mailto:hampstead@chestertons.co.uk)  
 02077941125  
[chestertons.co.uk](http://chestertons.co.uk)

Additional tenant charges apply (fees apply to non-AST tenancies only)  
 Tenancy Agreement Fee: £300  
 References per Tenant/Guarantor: £60  
 Inventory check (approx. £100 – £250 inc. VAT)  
[chestertons.co.uk/property-to-rent/applicable-fees](http://chestertons.co.uk/property-to-rent/applicable-fees)

# Thurlow Road, NW3

○ - Ceiling Height



Raised Ground Floor

Approx Gross Internal Area **828 Sq Ft - 76.92 Sq M**

Approx. Floor Area Including Restricted Heights **842 Sq Ft - 78.22 Sq M**

For Illustration Purposes Only - Not To Scale

[www.goldlens.co.uk](http://www.goldlens.co.uk)

Prepared for Chestertons

Ref. No. 010802J

