



Dingwall Gardens

Temple Fortune, NW11

£8,666.67 per month
(£2,000 per week)

Short Let. A beautiful 5 bedroom semi detached house over 3 floors boasting wood floors and a south facing garden. The property is situated in this excellent location close to the shops and amenities of Temple Fortune. Accommodation comprises ground: reception room, open plan fully fitted eat in kitchen, guest cloakroom 1st floor: master bedroom with en-suite shower room dressing area, further double bedroom with en-suite shower room, double bedroom, single bedroom, family bathroom, 2nd floor: study/double bedroom, en-suite bathroom.



Dingwall Gardens

Temple Fortune, NW11

- Short Let. A Beautiful Semi Detached House Over 3 Floors
- 5 Bedrooms, 4 Bathrooms, Reception, Fully Fitted Eat In Kitchen
- Wood Floors, South Facing Garden
- Situated in this Excellent Location, Walking Distance Shops/Amenities of Temple Fortune



Minimum Term: 1 months
Deposit Required: £8,000.00
Local Authority: London Borough Of Barnet
Council Tax Band: G
EPC Rating: D
Furnished

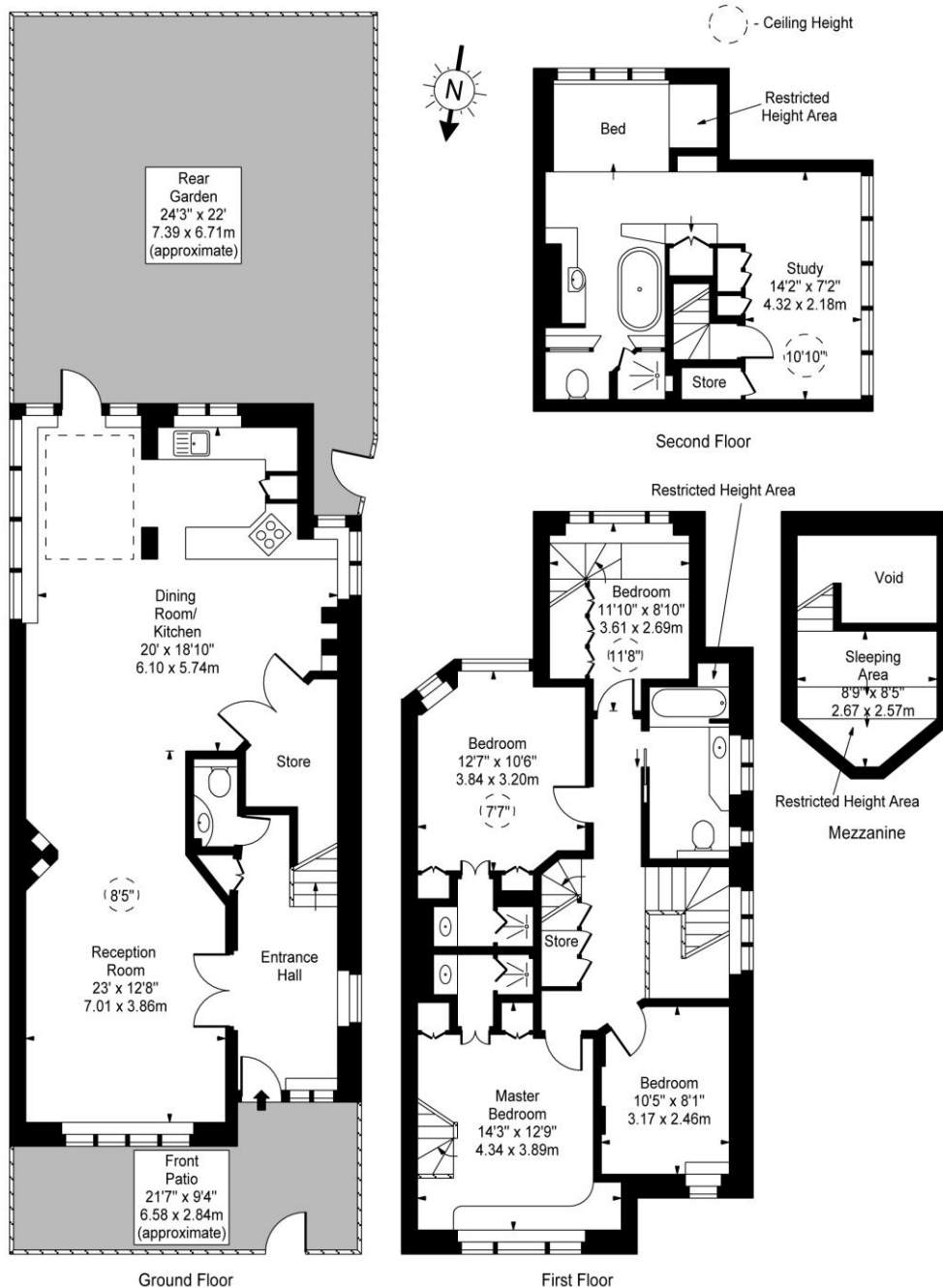
Energy Efficiency Rating		
	Current	Potential
Very energy efficient - lower running costs		
(94-100) A		
(81-93) B		
(69-80) C		73
(55-68) D	56	
(39-54) E		
(21-38) F		
(1-20) G		
Not energy efficient - higher running costs		
England, Scotland & Wales		EU Directive 2002/91/EC

Chestertons Hampstead Lettings

55-56 Hampstead High Street
 Hampstead
 London
 NW3 1QH
hampstead@chestertons.co.uk
 02077941125
chestertons.co.uk

Additional tenant charges apply (fees apply to non-AST tenancies only)
 Tenancy Agreement Fee: £300
 References per Tenant/Guarantor: £60
 Inventory check (approx. £100 – £250 inc. VAT)
chestertons.co.uk/property-to-rent/applicable-fees

**Dingwall Gardens,
Temple Fortune, NW11**



Approx Gross Internal Area **1885 Sq Ft - 175.12 Sq M**

Approx. Floor Area Including Restricted Heights **1970 Sq Ft - 183.01 Sq M**
(Excluding Void)

For Illustration Purposes Only - Not To Scale
www.goldlens.co.uk
Ref. No. 014472M

