



Buckland Crescent

London, NW3

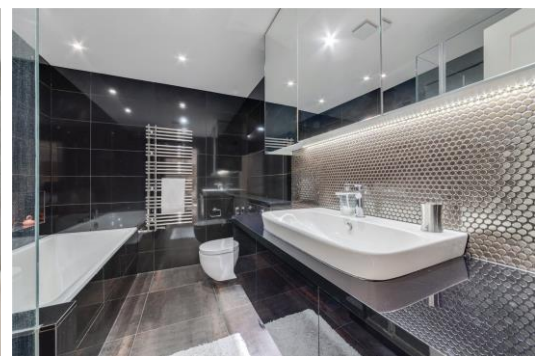
£6,899 per month
(£1,592.08 per week)

A beautifully presented three bedroom apartment on the raised ground floor of this well maintained purpose built block.

This spacious property has been thoughtfully designed and features: a large stylish kitchen complete with Miele appliances, double oven, two integrated fridges, integrated coffee machine and kitchen island. A well-proportioned reception room perfect for entertaining the whole family and three sumptuous double bedrooms that are generous in size and offer fantastic wardrobe/storage space. Two immaculate bathrooms complete the look.

Tasteful neutral décor throughout, stylish furniture, built- in Sonos and atmospheric recessed lighting.

Walking distance to Swiss Cottage tube and the array of shops, cafés and restaurants.



Buckland Crescent

London, NW3

- Three large bedrooms with storage
- Two chic Bathrooms
- Well-proportioned reception room
- Stylish kitchen with Miele appliances
- Furnished



Minimum Term: 12 months
Deposit Required: £7,960.38
Local Authority: London Borough Of Camden
Council Tax Band: G
EPC Rating: C
Furnished

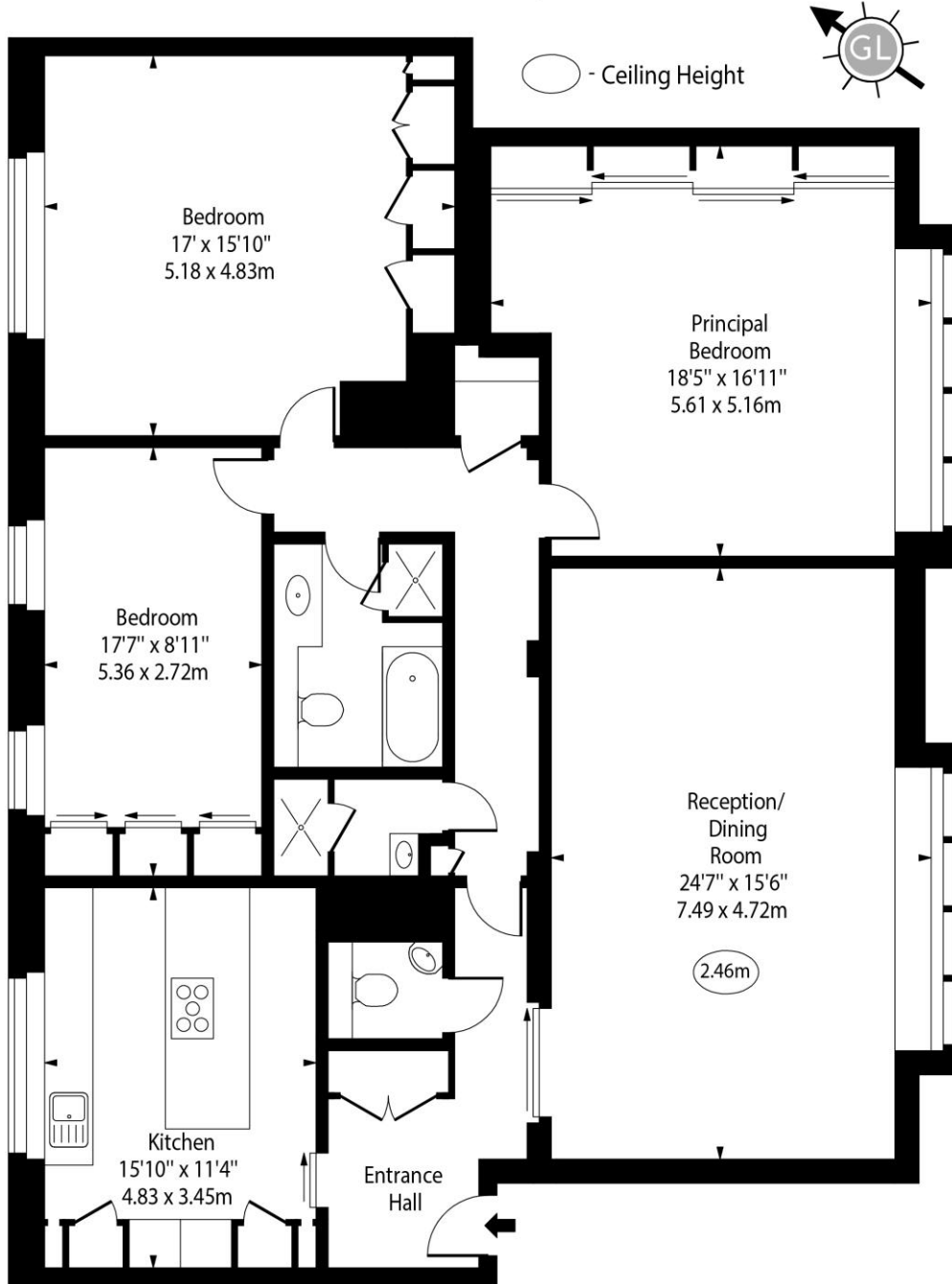
Energy Efficiency Rating		
	Current	Potential
Very energy efficient - lower running costs		
A (94-100)		
B (81-93)		
C (69-80)	79	87
D (55-68)		
E (39-54)		
F (21-38)		
G (1-20)		
Not energy efficient - higher running costs		
England, Scotland & Wales EU Directive 2002/91/EC		

Chestertons Hampstead Lettings

55-56 Hampstead High Street
Hampstead
London
NW3 1QH
hampstead@chestertons.co.uk
02077941125
chestertons.co.uk

Additional tenant charges apply (fees apply to non-AST tenancies only)
Tenancy Agreement Fee: £300
References per Tenant/Guarantor: £60
Inventory check (approx. £100 – £250 inc. VAT)
chestertons.co.uk/property-to-rent/applicable-fees

Buckland Crescent, NW3



Upper Ground Floor

Approx Gross Internal Area 1662 Sq Ft - 154.40 Sq M

For Illustration Purposes Only - Not To Scale

www.goldlens.co.uk

Prepared for Chestertons

Ref. No. 022384K

