



Mill Lane

London, NW6

£2,650 per month
(£611.54 per week)

Presenting a modern basement apartment in a prime location, this 2-bedroom, 2-bathroom property offers 764 sq ft of stylish living space. With a contemporary design and high-quality finishes throughout, this unfurnished apartment is perfect for those seeking a convenient and comfortable lifestyle. The property boasts a private patio, providing a perfect spot for relaxation. Situated in a purpose-built development, the apartment is well-maintained and secure, offering peace of mind to residents. Its accessible location makes it ideal for commuters and those looking to enjoy all the amenities of the town.



Mill Lane

London, NW6

- Lower Ground Floor Flat
- Wooden Floors
- Patio
- Great Storage
- Purpose Built Block



Minimum Term: 12 months
Deposit Required: £3,057.69
Local Authority: (4463) London Borough Of Camden Council
(Council Tax)
Council Tax Band: F
EPC Rating: C
Unfurnished

Energy Efficiency Rating		
	Current	Potential
Very energy efficient - lower running costs		
A (92-100)		
B (81-91)		
C (69-80)	71	71
D (55-68)		
E (39-54)		
F (21-38)		
G (1-20)		
Not energy efficient - higher running costs		
England, Scotland & Wales		EU Directive 2002/91/EC

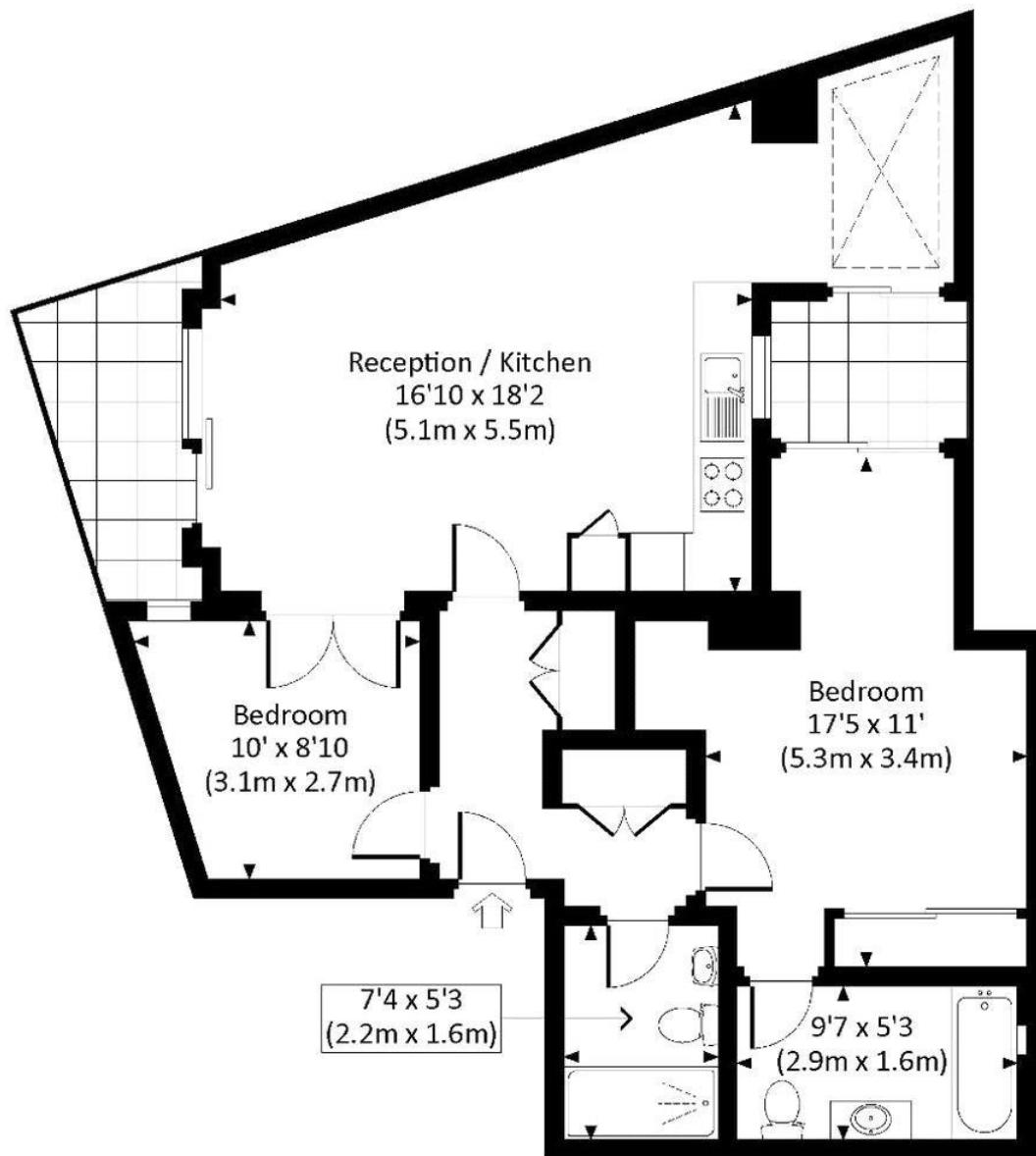
Chestertons Hampstead Lettings

55-56 Hampstead High Street
 Hampstead
 London
 NW3 1QH
 hampstead@chestertons.co.uk
 02077941125
 chestertons.co.uk

Additional tenant charges apply (fees apply to non-AST tenancies only)
 Tenancy Agreement Fee: £300
 References per Tenant/Guarantor: £60
 Inventory check (approx. £100 – £250 inc. VAT)
 chestertons.co.uk/property-to-rent/applicable-fees

MILL LANE, NW6

Approx. gross internal area
764 Sq Ft. / 71.0 Sq M.



LOWER GROUND FLOOR

All measurements have been made in accordance with RICS Code of Measuring Practice which are approximate only and only for illustrative purposes.

