



# Elizabeth Mews

Belsize Park, NW3

£5,000 per month  
(£1,153.85 per week)

A rarely available and simply stunning three bedroom house located on a highly desirable cobbled mews with residents parking in a sought after location in Belsize Park.

Recently refurbished, this fabulous home offers a blend of open plan modern living space whilst retaining period charm. Arranged over three floors, the ground floor comprises a large open-plan reception room with a bespoke kitchen. The first floor comprises a spacious double bedroom spanning the full width of the house with built in wardrobes, further bedroom, family bathroom and utility area. The very spacious principal bedrooms occupies the entire top floor and features an en-suite bathroom and built in wardrobes. Further benefits include bespoke parquet herringbone wooden flooring, new sash windows and retro radiators throughout.

Elizabeth Mews is conveniently located moments from England's Lane, providing a selection of popular local shops, cafes and restaurants with easy access to the amenities of nearby Belsize Village (0.6m). Swiss Cottage Underground Station is 0.6m (Jubilee Line) and Belsize Park Underground Station is 0.4m (Northern Line) are within easy reach, with local attractions such as the Hampstead Heath and Primrose Hill close by.



# Elizabeth Mews

Belsize Park, NW3

- Mews House
- Recently Refurbished
- Stunning Interiors
- Open Plan Kitchen & Reception
- Sought After Location





**Minimum Term:** 12 months  
**Deposit Required:** £6,923.08  
**Local Authority:** London Borough Of Camden  
**Council Tax Band:** G  
**EPC Rating:** D  
**Unfurnished**

Score	Energy rating	Current	Potential
92+	A		
81-91	B		86 B
69-80	C		
55-68	D	69 D	
39-54	E		
21-38	F		
1-20	G		

### *Chestertons Hampstead Lettings*

55-56 Hampstead High Street  
 Hampstead  
 London  
 NW3 1QH  
[hampstead@chestertons.co.uk](mailto:hampstead@chestertons.co.uk)  
 02077941125  
[chestertons.co.uk](https://www.chestertons.co.uk)

Additional tenant charges apply (fees apply to non-AST tenancies only)  
 Tenancy Agreement Fee: £300  
 References per Tenant/Guarantor: £60  
 Inventory check (approx. £100 – £250 inc. VAT)  
[chestertons.co.uk/property-to-rent/applicable-fees](https://www.chestertons.co.uk/property-to-rent/applicable-fees)

# Elizabeth Mews, Belsize Park, London, NW3

Approximate Gross Internal Floor Area = 101.3 sq m / 1091 sq ft

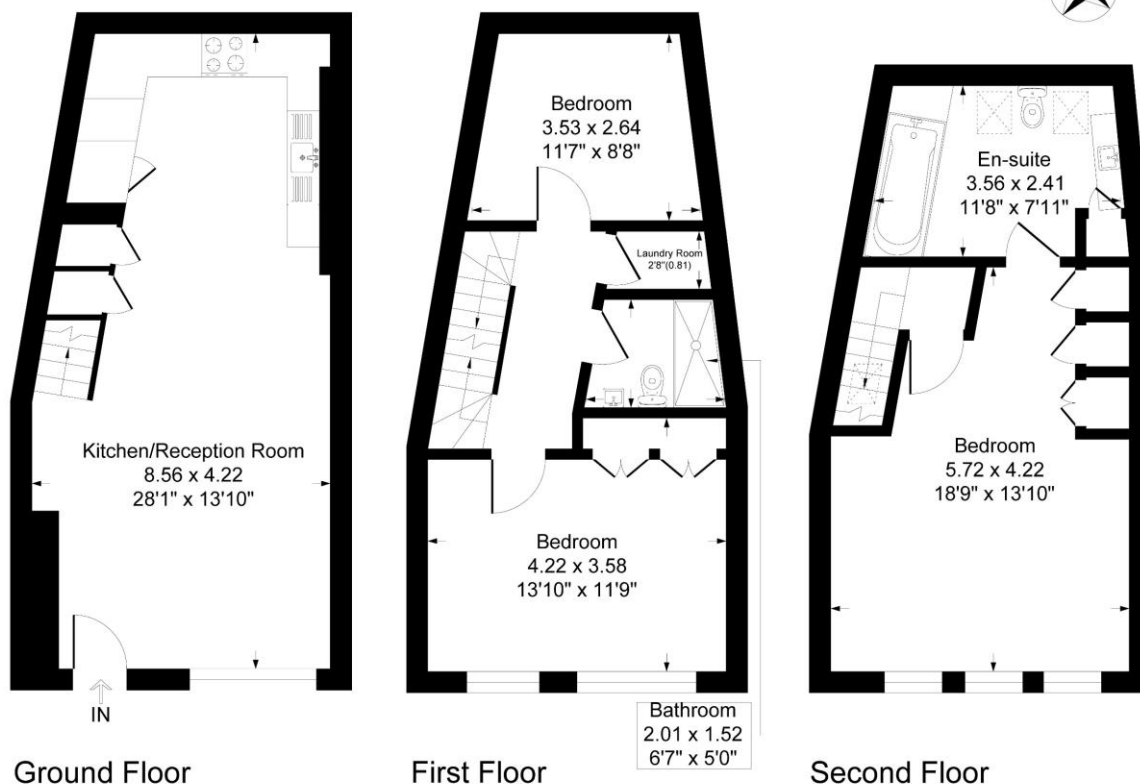


Illustration for identification purposes only, measurements are approximate, not to scale.

