



Primrose Court

253 Cricklewood Lane, NW2

£2,650 per month
(£611.54 per week)

Set within a quiet, purpose-built block, this well-sized two-bedroom, two-bathroom flat offers generous proportions, excellent natural light, and a private balcony. Ideal for a single occupant, couple, or couple with a child, the property combines comfort, practicality, and a peaceful setting, all within easy reach of local amenities and transport links.



Primrose Court

253 Cricklewood Lane, NW2

- Two Double Bedrooms
- Two Bathrooms
- Private Balcony
- Gated Parking For One Car
- Bright Reception



Minimum Term: 12 months
Deposit Required: £3,057.69
Local Authority: London Borough of Barnet
Council Tax Band: E
EPC Rating: C
Unfurnished

Score	Energy rating	Current	Potential
92+	A		
81-91	B		
69-80	C	77 C	83 B
55-68	D		
39-54	E		
21-38	F		
1-20	G		

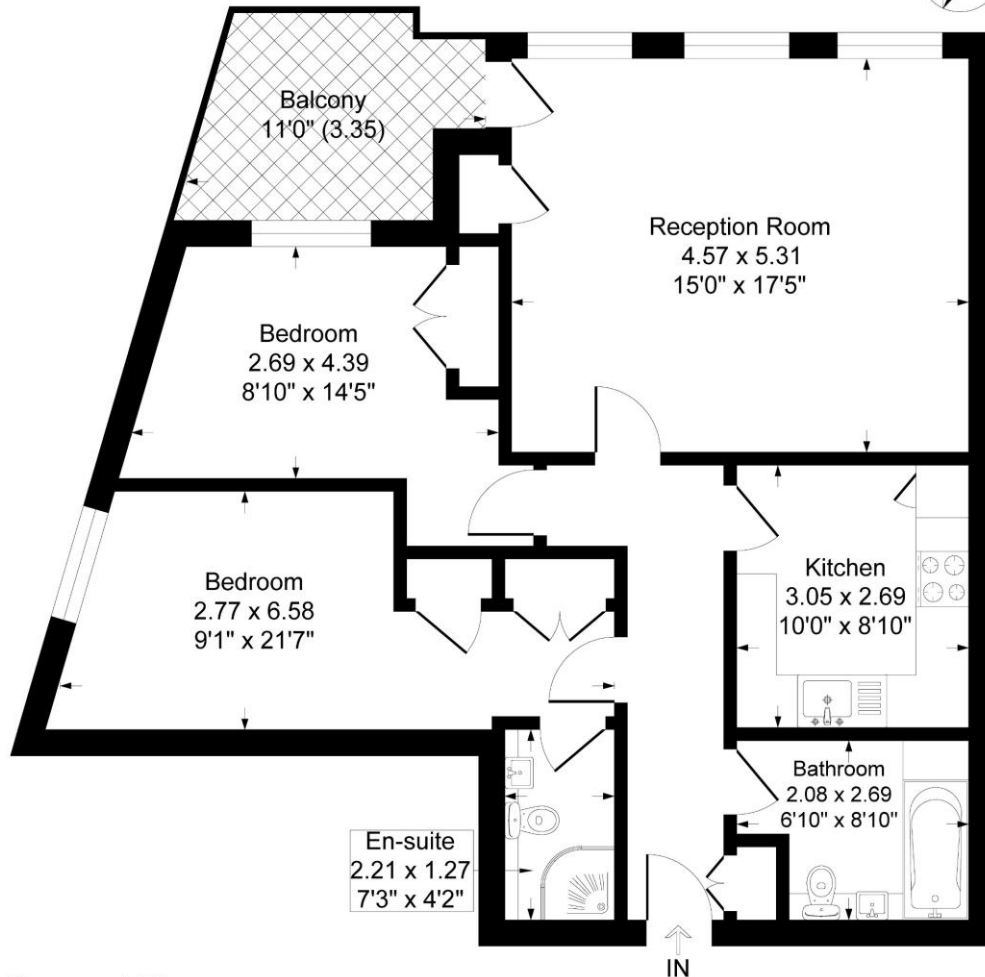
Chestertons Hampstead Lettings

55-56 Hampstead High Street
 Hampstead
 London
 NW3 1QH
hampstead@chestertons.co.uk
 02077941125
chestertons.co.uk

Additional tenant charges apply (fees apply to non-AST tenancies only)
 Tenancy Agreement Fee: £300
 References per Tenant/Guarantor: £60
 Inventory check (approx. £100 – £250 inc. VAT)
chestertons.co.uk/property-to-rent/applicable-fees

Primrose Court, 253 Cricklewood Lane, London, NW2

Approximate Gross Internal Floor Area = 81.2 sq m / 874 sq ft



Ground Floor

Illustration for identification purposes only, measurements are approximate, not to scale.

