



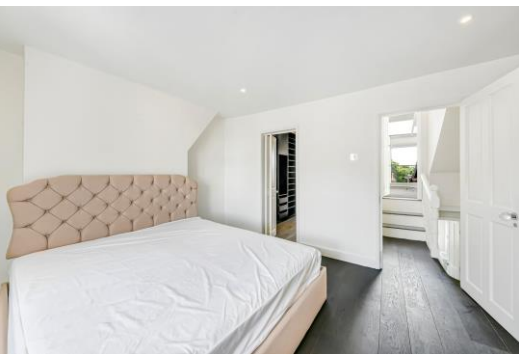
Heath Street

London, NW3

£6,250 per month
(£1,442.31 per week)

Superbly located on Heath Street in Hampstead Village, a 4 bedroom upper duplex apartment offering over 1,300 square feet of internal accommodation with the addition of a large south facing terrace

CHESTERTONS



Heath Street

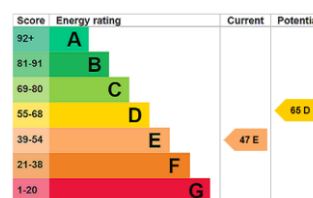
London, NW3

- Four Bedrooms
- Prime Hampstead Village Location
- High Spec Finish
- South Facing Roof Terrace
- Newly Decorated



Superbly located on Heath Street in Hampstead Village, a 4 bedroom upper duplex apartment offering over 1,300 square feet of internal accommodation with the addition of a large south facing terrace with far reaching views across London. The accommodation comprises; bright reception room, kitchen, master bedroom with en-suite bathroom and dressing room, 3 further bedrooms, and a shower room. With breath-taking views, this 4 bedroom/2 bathroom flat stands out in the current market.

Minimum Term: 12 months
Deposit Required: £8,653.85
Local Authority: London Borough Of Camden
Council Tax Band: F
EPC Rating: E
Furnished, Part Furnished, Unfurnished



Chestertons Hampstead Lettings

55-56 Hampstead High Street
 Hampstead
 London
 NW3 1QH
hampsteadlettingsusers@chestertons.co.uk
 02077941125
chestertons.co.uk

Additional tenant charges apply (fees apply to non-AST tenancies only)
 Tenancy Agreement Fee: £300
 References per Tenant/Guarantor: £60
 Inventory check (approx. £100 – £250 inc. VAT)
chestertons.co.uk/property-to-rent/applicable-fees

Heath Street, London, NW3 Approximate Gross Internal Floor Area = 124.0 sq m / 1335 sq ft

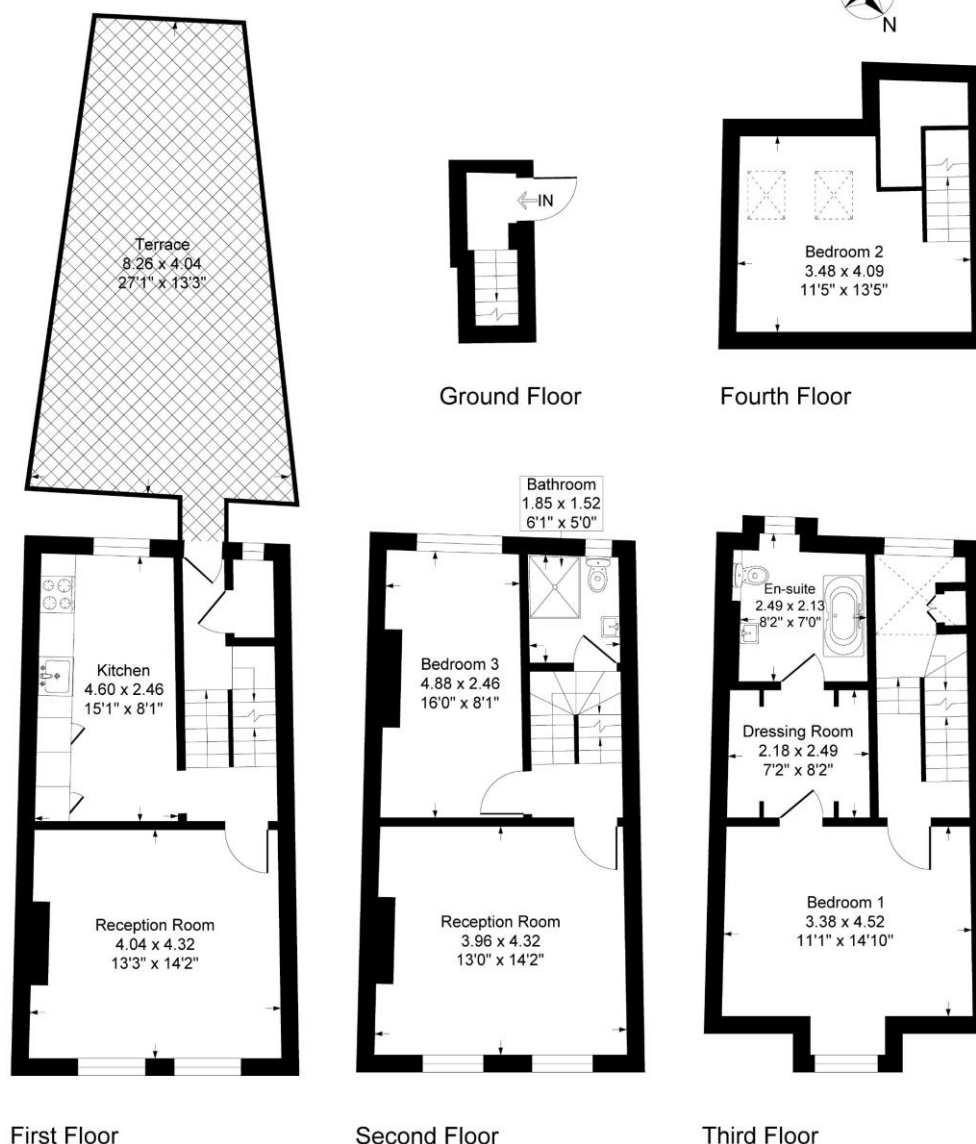


Illustration for identification purposes only, measurements are approximate, not to scale.

