

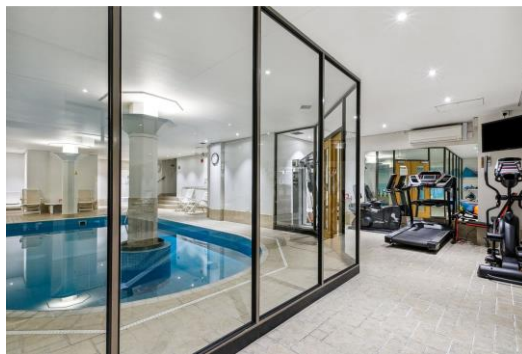


Summit Lodge

9 Lower Terrace, NW3

£10,250 per month
(£2,365.38 per week)

An exceptional 3 bedroom 1st floor apartment with an enclosed balcony overlooking the beautiful gardens set in this exclusive purpose built block in Hampstead. The building boasts a swimming pool and leisure complex, 24 hour concierge, underground parking and magnificent communal manicured gardens. Accommodation comprises grand reception room with balcony, fully fitted kitchen eat in kitchen, master bedroom with fitted wardrobes and en-suite bathroom, further double bedroom, double bedroom/study family bathroom, guest cloakroom.



Summit Lodge

9 Lower Terrace, NW3

- An Exceptional 1st Floor Apartment in Exclusive Block
- 3 Bedrooms, 2 Bathrooms, Reception, Kitchen
- Balcony, Manicured Communal Gardens, Swimming Pool, Leisure Complex, 24 Hour Concierge, Underground Parking for 2 cars
- Situated in Excellent Location in Hampstead



Minimum Term: 12 months
Deposit Required: £14,192.31
Local Authority: London Borough Of Camden
Council Tax Band: H
EPC Rating: B
Furnished, Part Furnished, Unfurnished

Energy Efficiency Rating		
	Current	Potential
Very energy efficient - lower running costs		
A (91-100)		
B (81-90)	83	83
C (69-80)		
D (55-68)		
E (39-54)		
F (21-38)		
G (1-20)		
Not energy efficient - higher running costs		
England, Scotland & Wales		EU Directive 2002/91/EC

Chestertons Hampstead Lettings

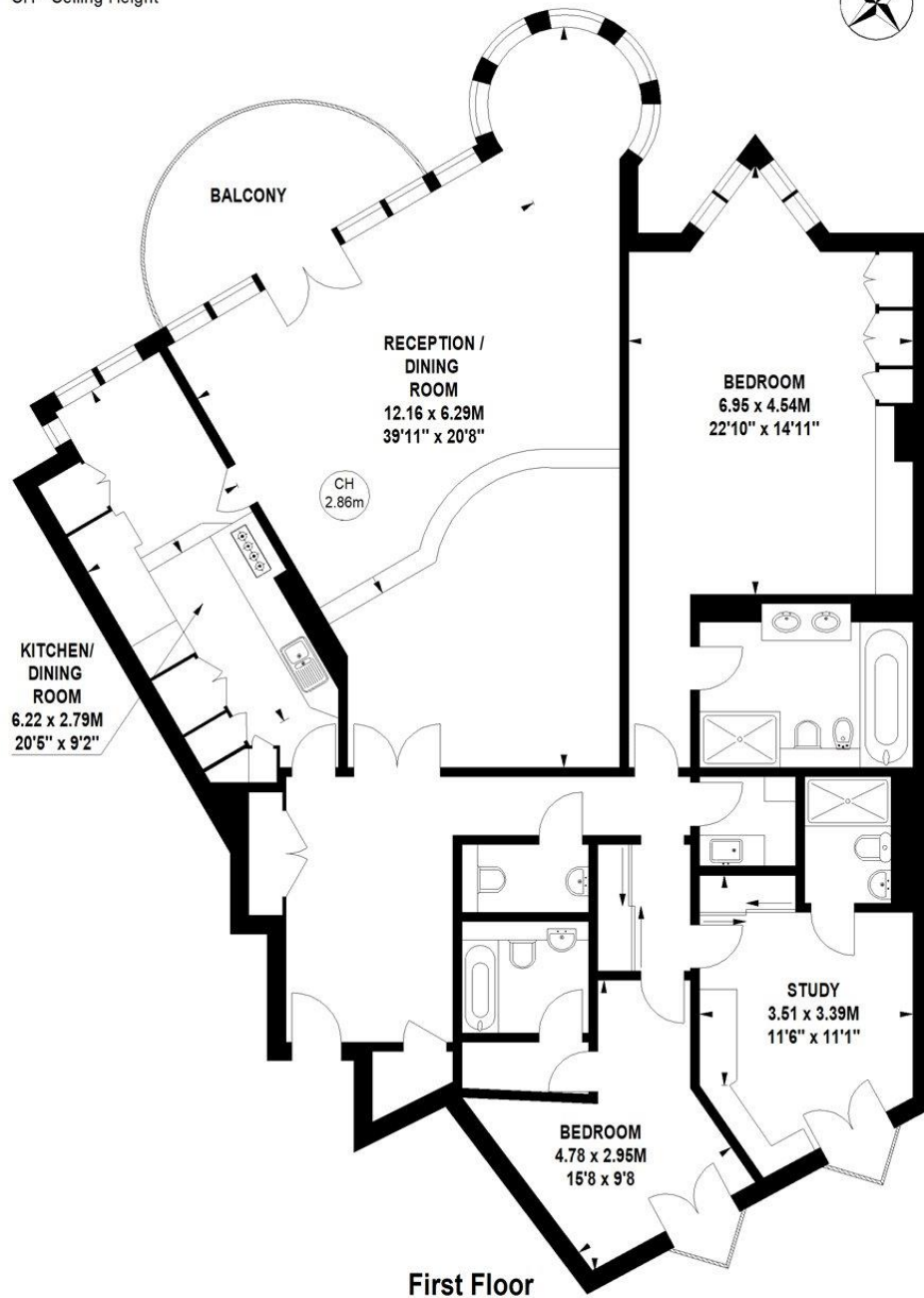
55-56 Hampstead High Street
Hampstead
London
NW3 1QH
hampstead@chestertons.co.uk
02077941125
chestertons.co.uk

Additional tenant charges apply (fees apply to non-AST tenancies only)
Tenancy Agreement Fee: £300
References per Tenant/Guarantor: £60
Inventory check (approx. £100 – £250 inc. VAT)
chestertons.co.uk/property-to-rent/applicable-fees

Summit Lodge, Lower Terrace, Hampstead, NW3

Approximate gross internal area
181.16 sq m / 1950 sq ft

Key :
CH - Ceiling Height



Not to scale, for guidance only and must not be relied upon as a statement of fact.
All measurements and areas are approximate only

