



# Fitzjohns Avenue

Hampstead, NW3

£6,600 per month  
(£1,523.08 per week)

An exceptionally spacious 4 bedroom garden apartment benefiting from plenty of storage, wood floors throughout, terrace and direct access to the communal gardens. Accommodation comprises grand reception room and dining area with French doors leading to the garden, high specification fully fitted kitchen, master bedroom with fitted wardrobes and en-suite bathroom, further double bedroom with fitted wardrobes and study area, further double bedroom, small double bedroom, family bathroom, shower room.



# Fitzjohns Avenue

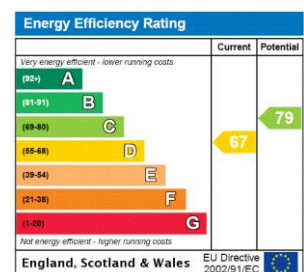
## Hampstead, NW3

- A Lower Ground Floor Apartment in Period Conversion
- 4 Bedrooms, 2 Bathrooms, Reception, Fully Fitted Kitchen
- Patio, Direct Access to Communal Gardens, Wood Floors Throughout
- Situation in Premier Location, Walking Distance to Hampstead/Belsize Park (Northern Lines)





**Minimum Term:** 12 months  
**Deposit Required:** £9,138.46  
**Local Authority:** London Borough Of Camden  
**Council Tax Band:** G  
**EPC Rating:** D  
**Unfurnished**

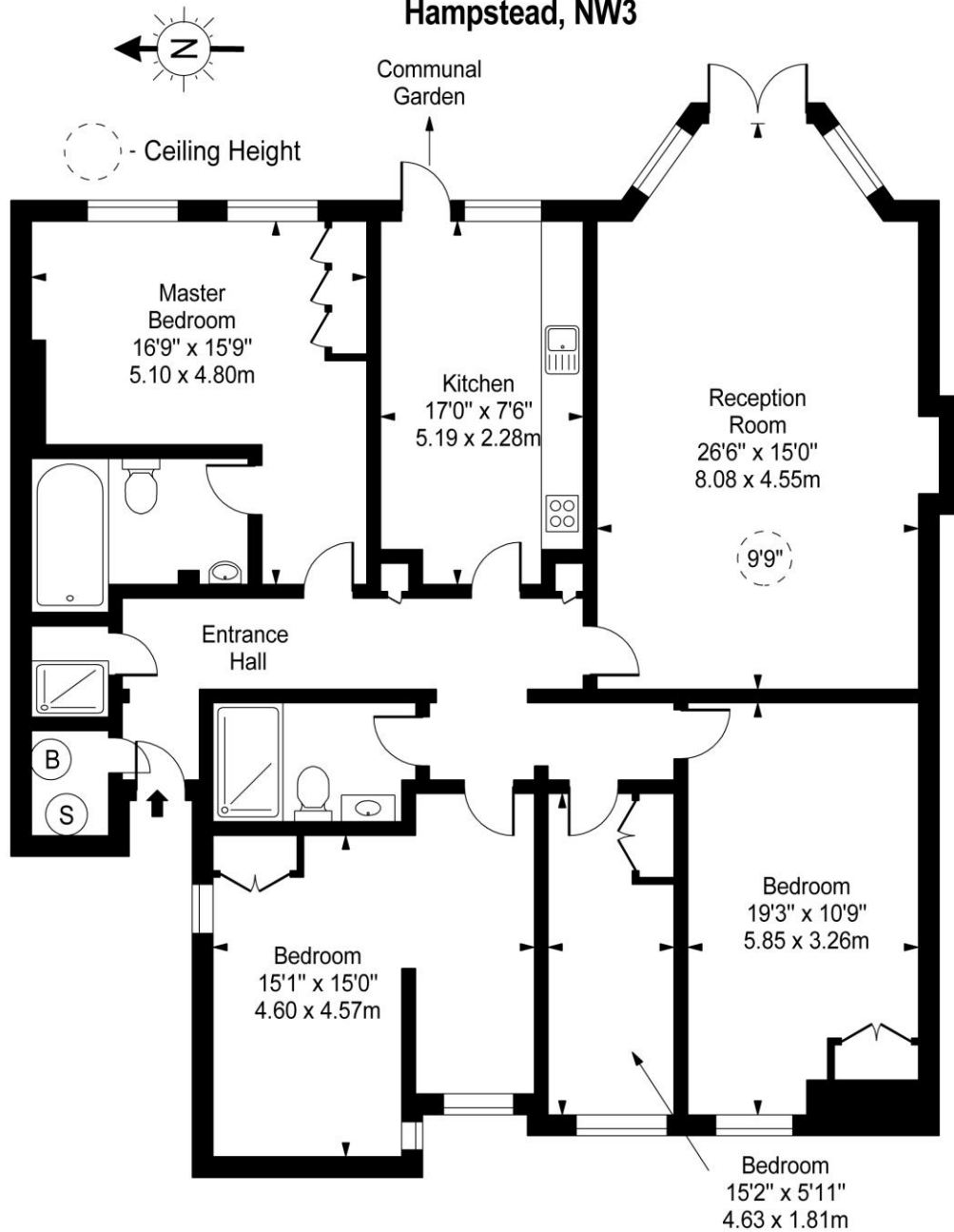


### Chestertons Hampstead Lettings

55-56 Hampstead High Street  
 Hampstead  
 London  
 NW3 1QH  
[hampstead@chestertons.co.uk](mailto:hampstead@chestertons.co.uk)  
 02077941125  
[chestertons.co.uk](http://chestertons.co.uk)

Additional tenant charges apply (fees apply to non-AST tenancies only)  
 Tenancy Agreement Fee: £300  
 References per Tenant/Guarantor: £60  
 Inventory check (approx. £100 – £250 inc. VAT)  
[chestertons.co.uk/property-to-rent/applicable-fees](http://chestertons.co.uk/property-to-rent/applicable-fees)

**Fitzjohns Avenue,  
Hampstead, NW3**



Ground Floor

**Approx Gross Internal Area 1670 Sq Ft - 155.14 Sq M**

For Illustration Purposes Only - Not To Scale

[www.goldlens.co.uk](http://www.goldlens.co.uk)

Prepared for Chestertons

Ref. No. 013245MIV

