



# Haverstock Hill

Belsize Park, NW3

£3,650 per month  
(£842.31 per week)

A refurbished 2 double bedroom ground floor apartment with its own entrance in this purpose built block boasting front and rear patios, communal gardens, wood floors throughout and off street parking for 1 car. The property is situated in this excellent location in the heart of Belsize Park within walking distance to the shops and amenities. Accommodation comprises reception room and dining room, fully fitted eat in kitchen, master bedroom with fitted wardrobes and brand new en-suite bathroom, further double bedroom, brand new shower room.



# Haverstock Hill

Belsize Park, NW3

- A Refurbished Ground Floor Apartment with its Own Entrance in Purpose Built Block
- 2 Bedrooms, 2 Bathrooms, Reception, Fully Fitted Kitchen
- Front and Rear Patios, Communal Gardens, Wood Floors Throughout, Off Street Parking for 1 Car
- Situated in Excellent Location in Belsize Park Within Walking Distance to the Shops/Amenities





**Minimum Term:** 12 months  
**Deposit Required:** £4,211.54  
**Local Authority:** London Borough Of Camden  
**Council Tax Band:** F  
**EPC Rating:** C  
**Unfurnished**

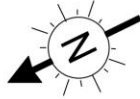
Energy Efficiency Rating		
	Current	Potential
Very energy efficient - lower running costs		
A (94-100)		
B (81-93)		
C (69-80)	70	76
D (55-68)		
E (39-54)		
F (21-38)		
G (1-20)		
Not energy efficient - higher running costs		
England, Scotland & Wales EU Directive 2002/91/EC		

### *Chestertons Hampstead Lettings*

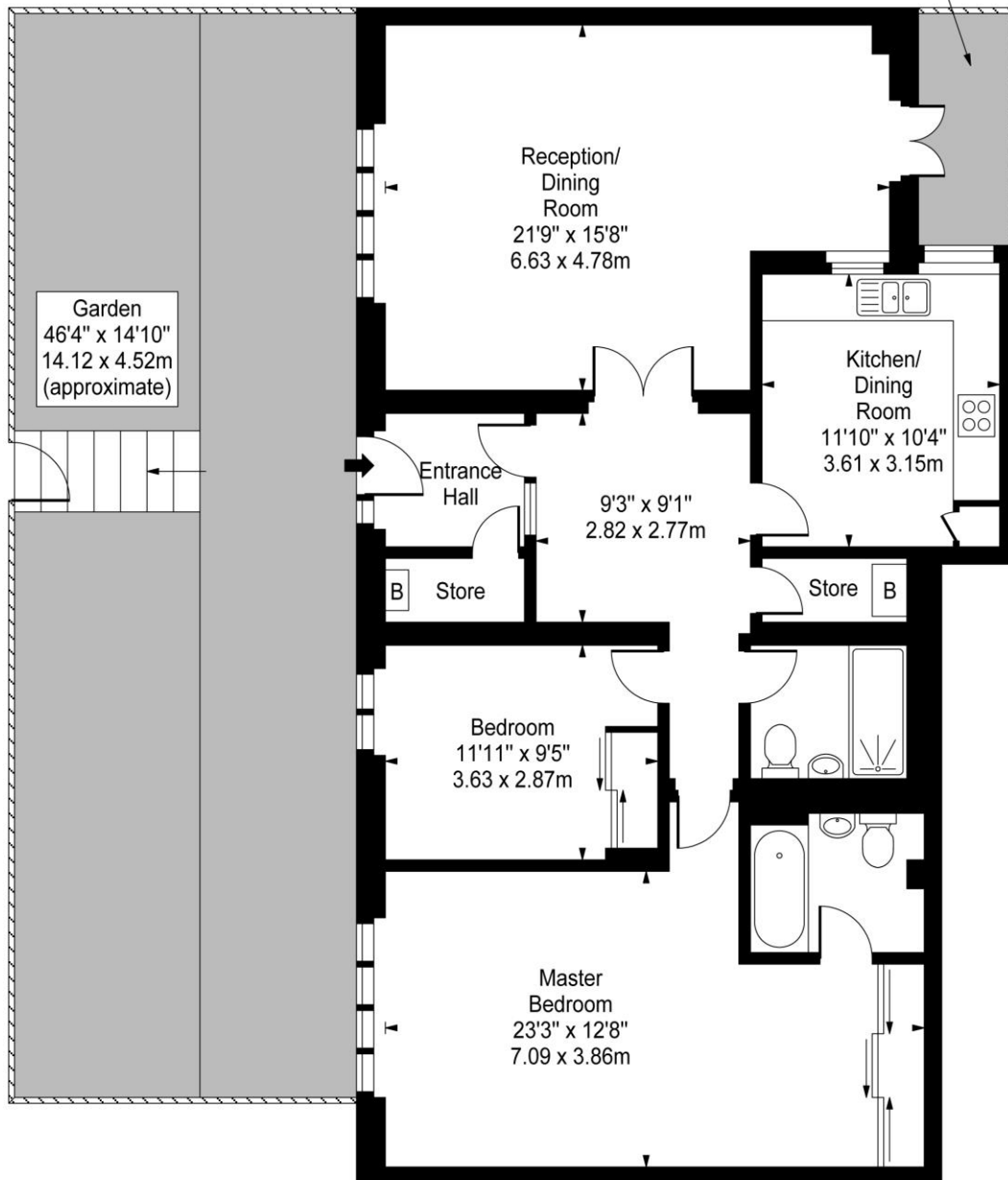
55-56 Hampstead High Street  
Hampstead  
London  
NW3 1QH  
hampstead@chestertons.co.uk  
02077941125  
chestertons.co.uk

Additional tenant charges apply (fees apply to non-AST tenancies only)  
Tenancy Agreement Fee: £300  
References per Tenant/Guarantor: £60  
Inventory check (approx. £100 – £250 inc. VAT)  
chestertons.co.uk/property-to-rent/applicable-fees

# Egan Lodge, Haverstock Hill, NW3



Patio  
9'11" x 4'2"  
3.02 x 1.27m  
(approximate)



Lower Ground Floor

**Approx Gross Internal Area 1172 Sq Ft - 108.88 Sq M**

For Illustration Purposes Only - Not To Scale

[www.goldlens.co.uk](http://www.goldlens.co.uk)

Prepared for Chestertons

Ref. No. 007193J

