



# Fitzjohns Avenue

Hampstead, NW3

£4,350 per month  
(£1,003.85 per week)

A highly refurbished 2 double bedroom duplex apartment set on the 2nd and 3rd floors of this beautiful Victorian building in an excellent location close proximity to Swiss Cottage (Jubilee Line) and walking distance to the fashionable shops and restaurants of Hampstead Village (Northern Line). The property has the benefit of wood floors in the entrance hall and reception room and offers parking under separate negotiation. Accommodation comprises large reception room, fully fitted eat in kitchen, master bedroom with en-suite shower room, 2nd double bedroom with en-suite bathroom and walk-in wardrobe, guest cloakroom. Sole Agent.



# Fitzjohns Avenue

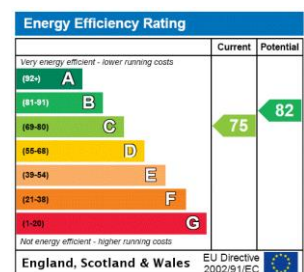
## Hampstead, NW3

- Highly Refurbished Duplex Apartment on the 2nd/3rd Floors of Beautiful Building
- 2 Bedrooms, 2 Bathrooms, Reception, Kitchen
- Wood Floors Throughout
- Close Proximity to Swiss Cottage (Jubilee Line) and Walking Distance to Hampstead Village (Northern Line)





**Minimum Term:** 12 months  
**Deposit Required:** £5,019.23  
**Local Authority:** London Borough Of Camden  
**Council Tax Band:** E  
**EPC Rating:** C  
**Unfurnished**



### *Chestertons Hampstead Lettings*

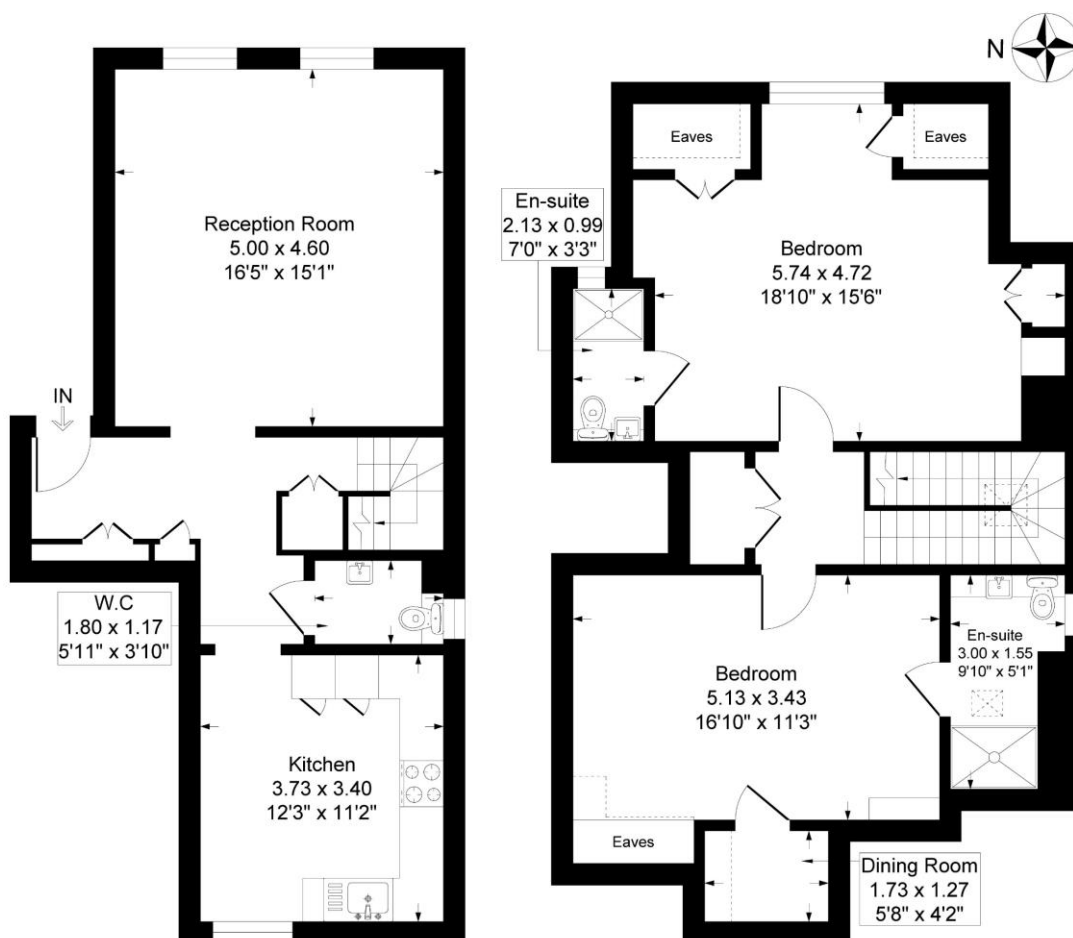
55-56 Hampstead High Street  
 Hampstead  
 London  
 NW3 1QH  
[hampstead@chestertons.co.uk](mailto:hampstead@chestertons.co.uk)  
 02077941125  
[chestertons.co.uk](http://chestertons.co.uk)

Additional tenant charges apply (fees apply to non-AST tenancies only)  
 Tenancy Agreement Fee: £300  
 References per Tenant/Guarantor: £60  
 Inventory check (approx. £100 – £250 inc. VAT)  
[chestertons.co.uk/property-to-rent/applicable-fees](http://chestertons.co.uk/property-to-rent/applicable-fees)

## Fitzjohns Avenue, Hampstead, London, NW3

Approximate Gross Internal Floor Area = 115.1 sq m / 1239 sq ft (Included Restricted Height Area)

Approximate Gross Internal Floor Area = 111.7 sq m / 1202 sq ft (Excluded Restricted Height Area)



Second Floor

Third Floor

Illustration for identification purposes only, measurements are approximate, not to scale.

