



South Hill Park

London, NW3

£5,500 per month
(£1,269.23 per week)

Newly Sensational newly refurbished 3 bedroom upper maisonette - Roof terrace with breathtaking views of Hampstead Heath ponds - Architecturally designed to the highest contemporary standard - Wood floors and neutral decor throughout - Arranged over 2nd and 3rd (top) floors of an immaculate period conversion - Reception flooded with natural light and terrace access - Opulent open plan kitchen - Main bedroom with fitted wardrobes - Second double bedroom - Third single bedroom/study - Sumptuous bathroom with separate shower - Guest wc - Sought after location a stone's throw to Hampstead Heath and overground station - Moments to South End Greens shops and cafes



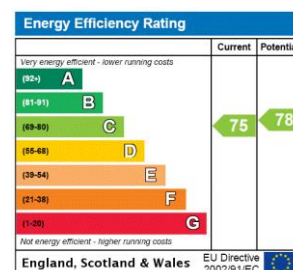
South Hill Park

London, NW3

- Newly Refurbished Upper Maisonette
- Roof Terrace Overlooking Hampstead Heath Ponds
- 3 Bedrooms
- High Standard of Refurbishment
- Duplex Apartment



Minimum Term: 12 months
Deposit Required: £6,346.15
Local Authority: London Borough Of Camden
Council Tax Band: E
EPC Rating: C
Furnished, Part Furnished, Unfurnished



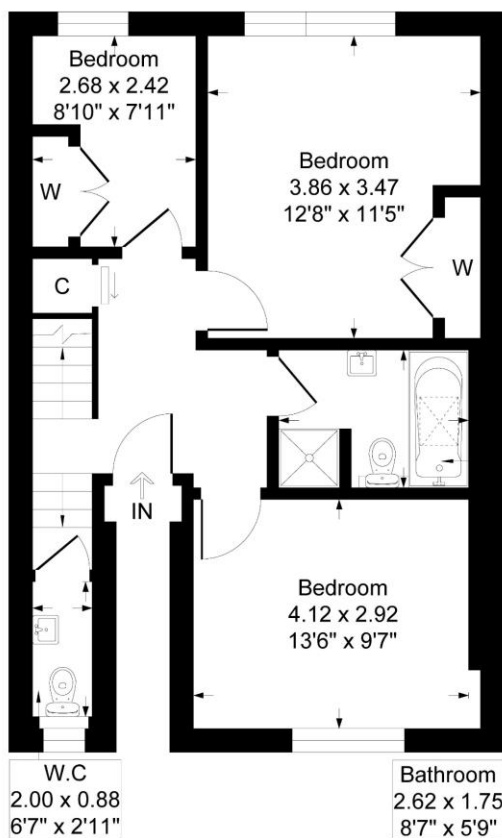
Chestertons Hampstead Lettings

55-56 Hampstead High Street
 Hampstead
 London
 NW3 1QH
 hampstead@chestertons.co.uk
 02077941125
 chestertons.co.uk

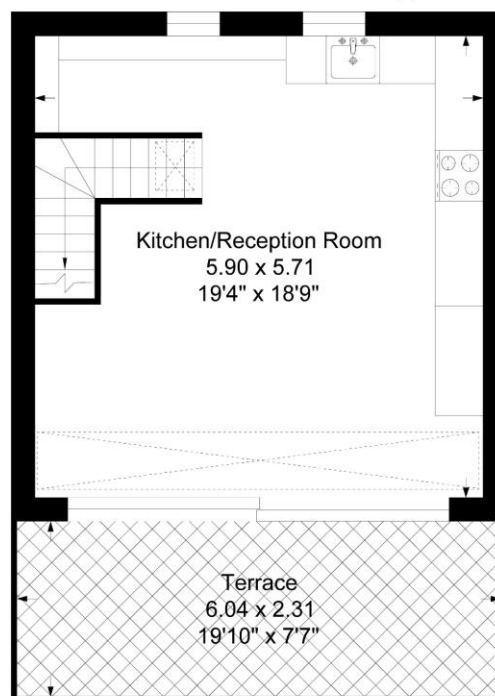
Additional tenant charges apply (fees apply to non-AST tenancies only)
 Tenancy Agreement Fee: £300
 References per Tenant/Guarantor: £60
 Inventory check (approx. £100 – £250 inc. VAT)
[chestertons.co.uk/property-to-rent/applicable-fees](https://www.chestertons.co.uk/property-to-rent/applicable-fees)

South Hill Park, London, NW3

Approximate Gross Internal Floor Area = 83.0 sq m / 893 sq ft



Second Floor



Third Floor

Illustration for identification purposes only, measurements are approximate, not to scale.

