



# Adamson Road

Swiss Cottage, NW3

£7,583.33 per month  
(£1,750 per week)

**\*\*SHORT LET\*\*** A stunning contemporary style 3 bedroom duplex apartment on the top 2 floors of this Victorian building benefiting from wood floors throughout, surround system, electronic blinds, working gas fire place and balcony. The property is situated within close proximity to Swiss Cottage (Jubilee Line) and walking distance to the green spaces and amenities of Primrose Hill. Accommodation comprises 2nd floor: reception room and dining room with direct access to the balcony, fully fitted eat in kitchen with breakfast bar, double bedroom with en-suite shower room, guest cloakroom 3rd floor: master bedroom with fitted wardrobes and en-suite shower room, electronic blinds and skylight with electronic blinds, storage room, further double bedroom with walk in wardrobe with fitted wardrobes and en-suite bathroom.



# Adamson Road

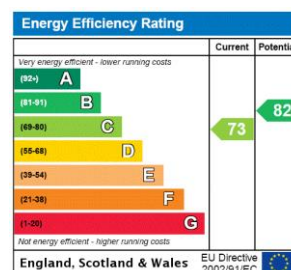
## Swiss Cottage, NW3

- Stunning Contemporary Style Duplex Apartment on Top 2 Floors of Period Building
- 3 Bedrooms, 3 Bathrooms, Reception, Fully Fitted Eat In Kitchen
- Wood Floors, Balcony, Electronic Blinds, Surround System, Fibre Optics
- Close Proximity to Swiss Cottage, Walking Distance to Green Spaces/Amenities of Primrose Hill





**Minimum Term:** 1 months  
**Deposit Required:** £7,000.00  
**Local Authority:** Camden  
**Council Tax Band:** G  
**EPC Rating:** C  
**Furnished**

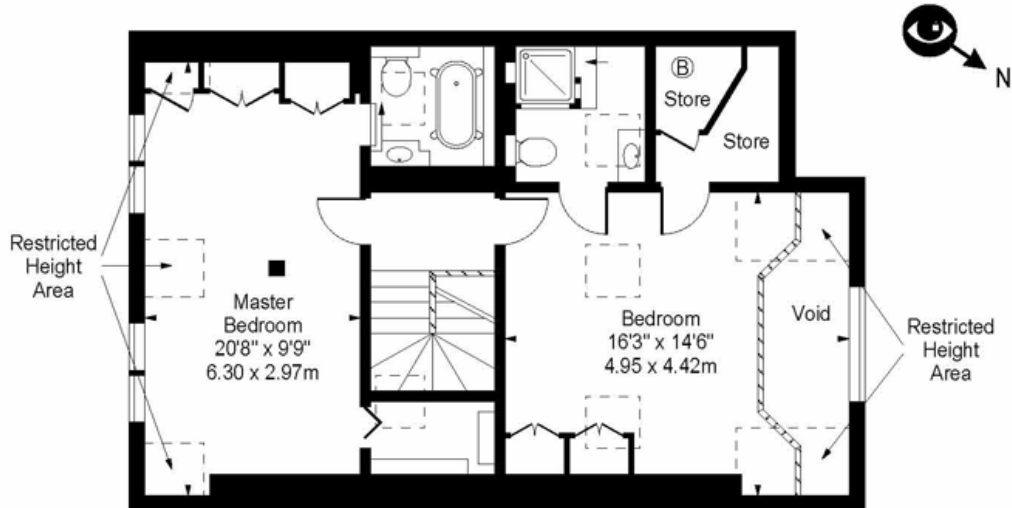


### Chestertons Hampstead Lettings

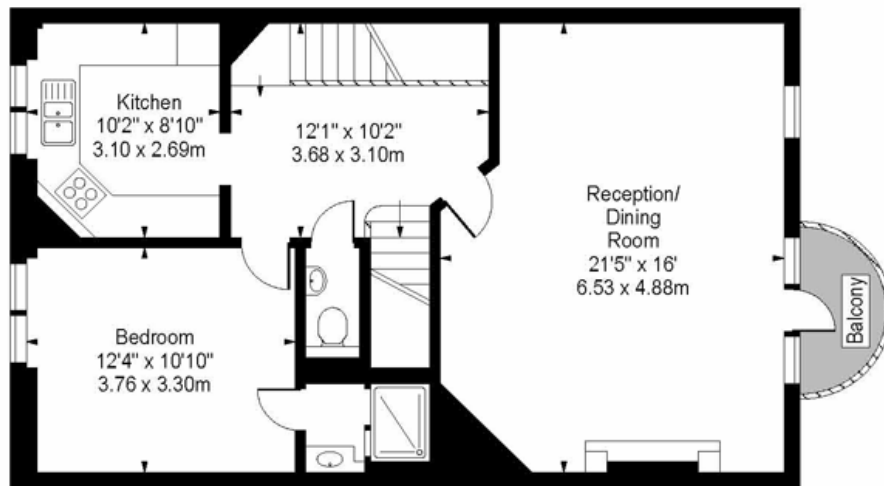
55-56 Hampstead High Street  
 Hampstead  
 London  
 NW3 1QH  
 hampstead@chestertons.co.uk  
 02077941125  
 chestertons.co.uk

Additional tenant charges apply (fees apply to non-AST tenancies only)  
 Tenancy Agreement Fee: £300  
 References per Tenant/Guarantor: £60  
 Inventory check (approx. £100 – £250 inc. VAT)  
 chestertons.co.uk/property-to-rent/applicable-fees

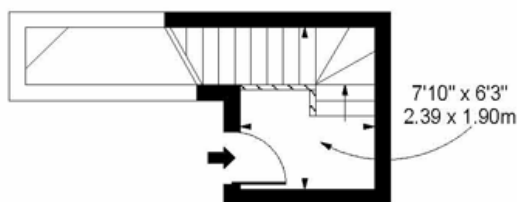
## Adamson Road, NW3



Third Floor



Second Floor



First Floor

**Approx Gross Internal Area 1391 Sq Ft - 129.22 Sq M**

**(Including Restricted Height Area)**

For Illustration Purposes Only - Not To Scale

Floor Plan by [www.bpmmediagroup.com](http://www.bpmmediagroup.com)

Ref: No. P54932

