



Goldhurst Terrace

South Hampstead, NW6

£4,100 per month
(£946.15 per week)

A magnificent 3 double bedroom duplex apartment on the top 2 floors of this period building situated in this quiet residential road in South Hampstead. The property has been finished to the highest of standards and boasts wood floors throughout and a large roof terrace. Accommodation comprises 2nd floor reception room and dining area with terrace off, open plan fully fitted kitchen, guest cloakroom, master bedroom with fitted wardrobes and en-suite bathroom, 2nd double bedroom with fitted wardrobes, 3rd floor: double bedroom with fitted wardrobes and spacious en-suite bathroom.



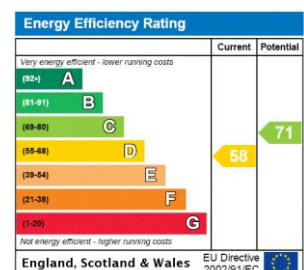
Goldhurst Terrace

South Hampstead, NW6

- A Magnificent Duplex Apartment on the Top 2 Floors of Period Building
- 3 Bedrooms, 2 Bathrooms, Reception, Eat In Kitchen
- Large Roof Terrace, Wood Floors Throughout, Parking Space for 1 Car
- Situated in Quiet Residential Road in South Hampstead, Short Walk to Shops/Restaurants of Finchley Road (Jubilee Line)



Minimum Term: 12 months
Deposit Required: £5,676.92
Local Authority: London Borough Of Camden
Council Tax Band: F
EPC Rating: D
Furnished, Unfurnished

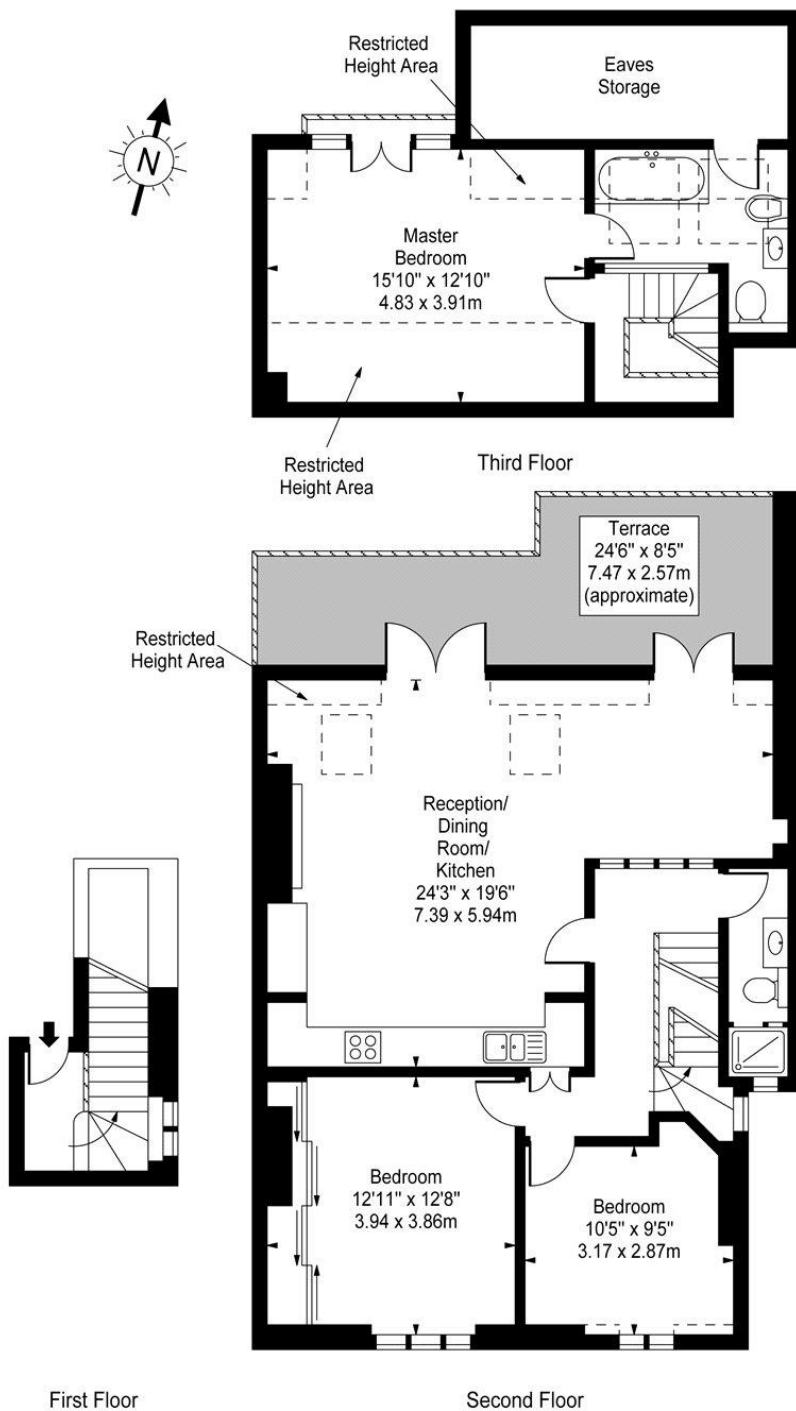


Chestertons Hampstead Lettings

55-56 Hampstead High Street
 Hampstead
 London
 NW3 1QH
hampstead@chestertons.co.uk
 02077941125
chestertons.co.uk

Additional tenant charges apply (fees apply to non-AST tenancies only)
 Tenancy Agreement Fee: £300
 References per Tenant/Guarantor: £60
 Inventory check (approx. £100 – £250 inc. VAT)
chestertons.co.uk/property-to-rent/applicable-fees

Goldhurst Terrace, NW6



Approx Gross Internal Area **1290 Sq Ft - 119.84 Sq M**
(Including Restricted Height Area & Eaves Storage)

For Illustration Purposes Only - Not To Scale
www.goldlens.co.uk
Prepared for Chestertons
Ref. No. 002668

