



Moreland Court

Finchley Road, NW2

£2,800 per month
(£646.15 per week)

Newly refurbished three double bedroom ground floor apartment (Approx. 926 sq. ft, 86 sq. m) set within this period mansion block located on the Finchley Road.

This stunning apartment comprises spacious reception room/bedroom with newly laid laminate flooring (please note there is no door in place separating this room with the dining room), dining area, contemporary newly fitted kitchen with brand new appliances, two further bright double bedrooms (one with en-suite shower room) with wardrobes and two newly installed tiled shower rooms. Further benefits of this apartment include newly fitted kitchen, tiled shower rooms, newly laid laminate flooring and redecoration throughout.

The property is situated in an excellent location walking distance to the shops and amenities of Finchley Road (Jubilee Line) with easy access into the City and close proximity to the amenities of West End Lane.



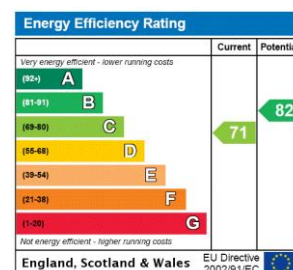
Moreland Court

Finchley Road, NW2

- New Refurbished
- Two Bedroom
- Spacious Apartment
- Ground Floor Access
- Convenient Location



Minimum Term: 12 months
Deposit Required: £3,230.77
Local Authority: London Borough of Barnet
Council Tax Band: E
EPC Rating: C
Furnished, Part Furnished, Unfurnished

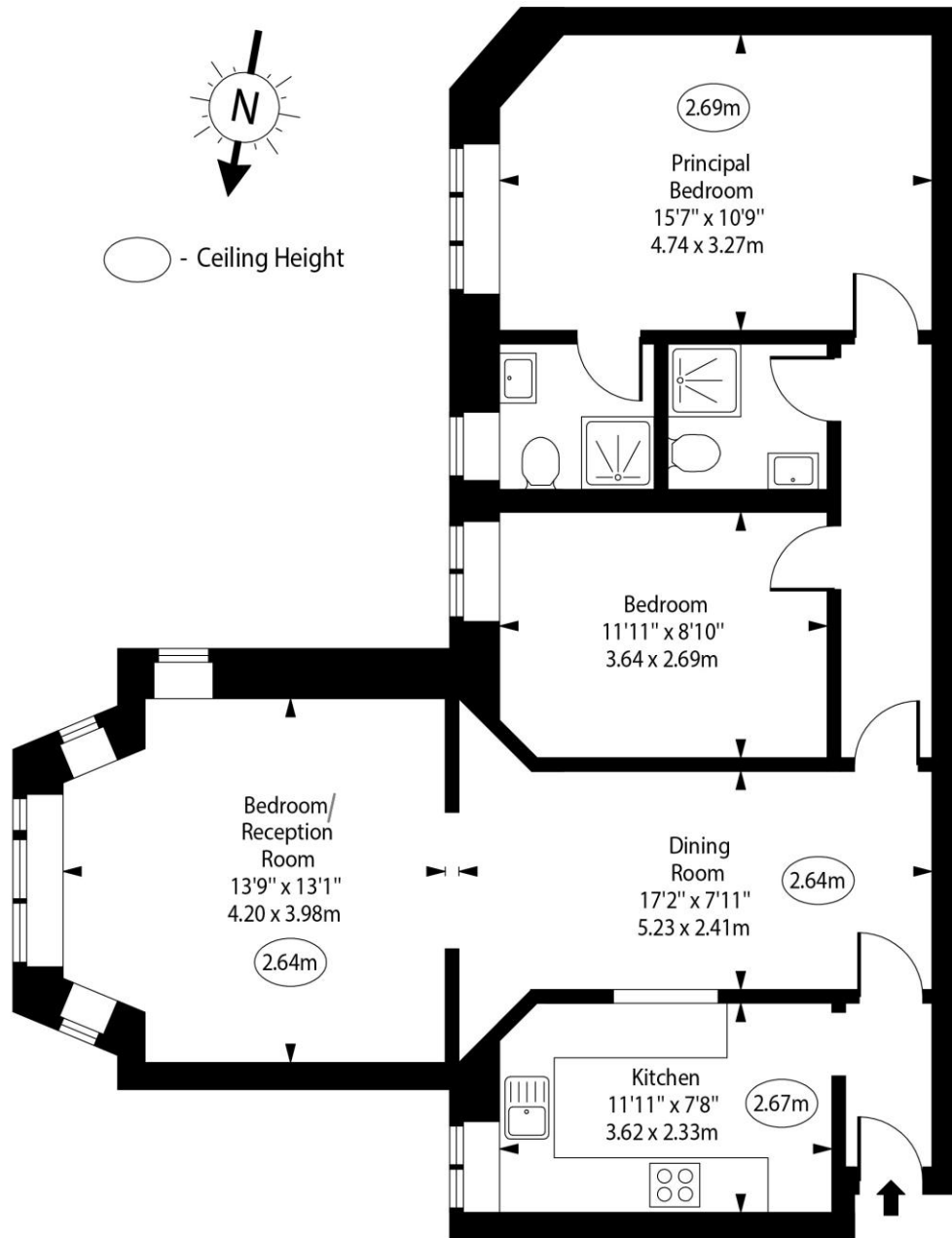


Chestertons Hampstead Lettings

55-56 Hampstead High Street
Hampstead
London
NW3 1QH
hampstead@chestertons.co.uk
02077941125
chestertons.co.uk

Additional tenant charges apply (fees apply to non-AST tenancies only)
Tenancy Agreement Fee: £300
References per Tenant/Guarantor: £60
Inventory check (approx. £100 – £250 inc. VAT)
chestertons.co.uk/property-to-rent/applicable-fees

Moreland Court,
Finchley Road, NW2



Ground Floor

Approx Gross Internal Area 926 Sq Ft - 86.0 Sq M

For Illustration Purposes Only - Not To Scale