



Fitzjohns Avenue

Hampstead, NW3

£6,500 per month
(£1,500 per week)

VIDEO TOUR AVAILABLE. Short Let. A magnificent 2 bedroom duplex apartment on the 3rd/4th floors of this period conversion with lift boasting beautiful parquet floors situated in this excellent location in Hampstead (Northern Line) and easy access to the transport links of Swiss Cottage (Jubilee Line). Accommodation comprises 3rd floor: reception room, open plan fully fitted kitchen, double bedroom, shower room 4th floor: double bedroom, family bathroom, utility room. Sole Agent.

CHESTERTONS



Fitzjohns Avenue

Hampstead, NW3

- Short Let. A Magnificent Duplex Apartment on 3rd/4th Floors in Smart Building
- 2 Bedrooms, 2 Bathrooms, Reception, Kitchen
- Parquet Floors, Lift
- Excellent Location in Hampstead (Northern Line), Easy Access to the Transport Links of Swiss Cottage (Jubilee Line)



Minimum Term: 3 months
Deposit Required: £6,000.00
Local Authority: London Borough Of Camden
Council Tax Band: F
EPC Rating: C
Furnished

Energy Efficiency Rating		
	Current	Potential
Very energy efficient - lower running costs		
A (94-100)		
B (81-93)		
C (69-80)	79	79
D (55-68)		
E (39-54)		
F (21-38)		
Not energy efficient - higher running costs		
G (1-20)		
England, Scotland & Wales EU Directive 2002/91/EC		

Chestertons Hampstead Lettings

55-56 Hampstead High Street
 Hampstead
 London
 NW3 1QH
lettings.hampstead@chestertons.co.uk
 02077941125
chestertons.co.uk

Additional tenant charges apply (fees apply to non-AST tenancies only)
 Tenancy Agreement Fee: £300
 References per Tenant/Guarantor: £60
 Inventory check (approx. £100 – £250 inc. VAT)
chestertons.co.uk/property-to-rent/applicable-fees

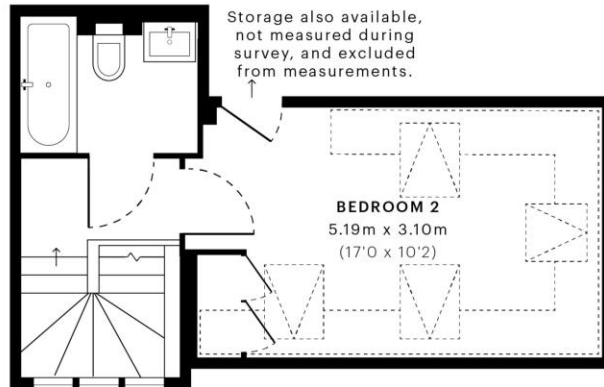


Fitzjohns Avenue, NW3

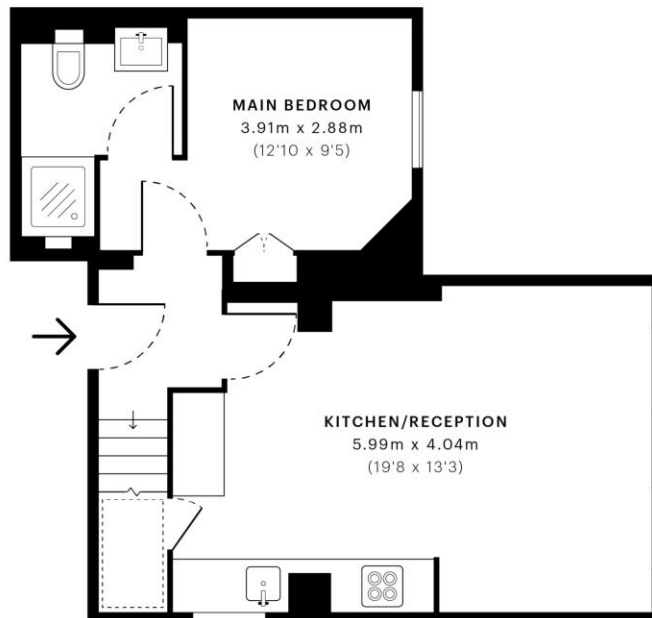
CAPTURE DATE 15/09/2022 LASER SCAN POINTS 60,981,622

GROSS INTERNAL AREA

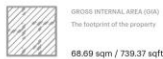
68.69 sqm / 739.37 sqft



— Fourth Floor



— Third Floor



Spec Verified floor plans are produced in accordance with:
Royal Institution of Chartered Surveyors' Property Measurement Standards.
Plots and gardens are illustrative only and excluded from all area calculations.
Due to rounding, numbers may not add up precisely.
All measurements shown for the individual room lengths and widths
are the maximum points of measurements captured in the scan.

IPW6-38 RESIDENTIAL 65.90 sqm / 709.34 sqft
IPW6-3C RESIDENTIAL 62.07 sqm / 674.97 sqft

SPEC ID 56321db15635d440e32c38941

