



Pulse Apartments

52 Lymington Road, NW6

£4,000 per month
(£923.08 per week)

A lateral three bedroom luxury apartment boasting approx. 1146 sq ft in a modern development on the corner of Lymington Road and Finchley Road. Located on the 5th Floor, this flat boasts three lovely size bedrooms, two bathrooms (1 ensuite) and a modern fitted kitchen. The flat benefits from a very spacious lounge surrounded by large windows with a private balcony big enough to entertain, porter and an allocated underground parking space. Further benefits include underfloor heating and a porter service as well as being a few minute's walk from transport (Jubilee and Metropolitan Lines) and the O2 Centre



Pulse Apartments

52 Lymington Road, NW6

- Lateral Living
- Underground Parking For One Car
- Pet Friendly
- Balcony
- 5th Floor
- Concierge



Minimum Term: 12 months
Deposit Required: £4,615.38
Local Authority: London Borough Of Camden
Council Tax Band: G
EPC Rating: B
Furnished

Energy Efficiency Rating		
	Current	Potential
Very energy efficient - lower running costs		
(94-100) A		
(81-93) B	83	83
(69-80) C		
(55-68) D		
(39-54) E		
(21-38) F		
(1-20) G		
Not energy efficient - higher running costs		
England, Scotland & Wales EU Directive 2002/91/EC		

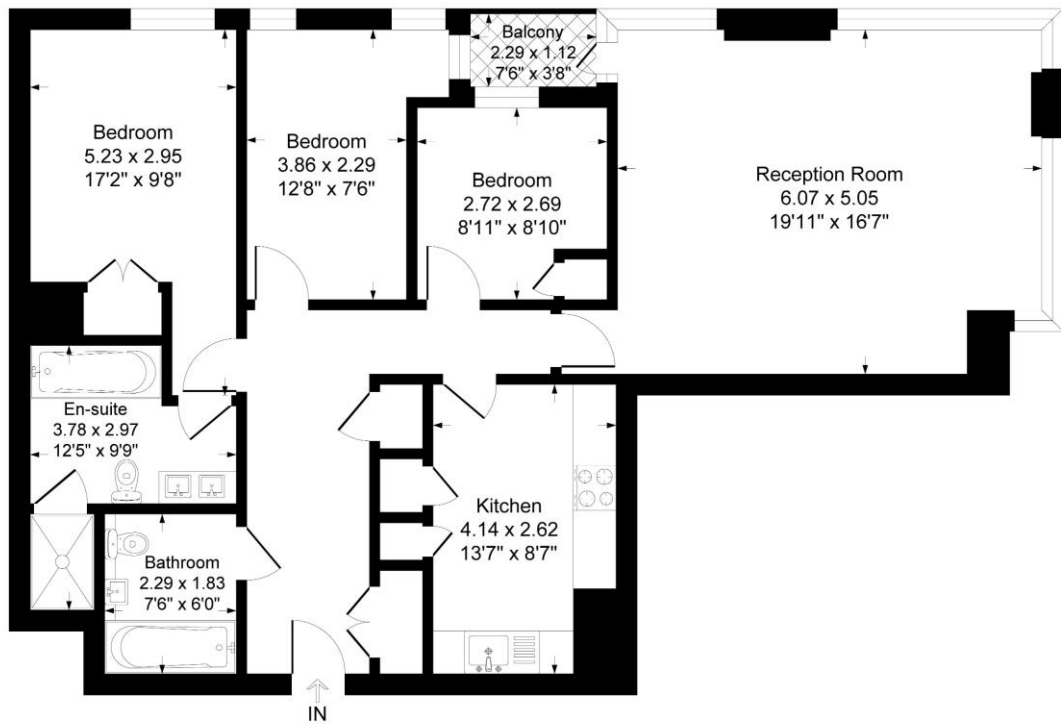
Chestertons Hampstead Lettings

55-56 Hampstead High Street
 Hampstead
 London
 NW3 1QH
hampstead@chestertons.co.uk
 02077941125
chestertons.co.uk

Additional tenant charges apply (fees apply to non-AST tenancies only)
 Tenancy Agreement Fee: £300
 References per Tenant/Guarantor: £60
 Inventory check (approx. £100 – £250 inc. VAT)
chestertons.co.uk/property-to-rent/applicable-fees

Pulse Apartments, 52 Lymington Road, London, NW6

Approximate Gross Internal Floor Area = 102.6 sq m / 1105 sq ft



Fifth Floor

Illustration for identification purposes only, measurements are approximate, not to scale.

