



# Pulse Apartments

52 Lymington Road, NW6

£4,200 per month  
(£969.23 per week)

A lateral three bedroom luxury apartment boasting approx. 1146 sq ft in a modern development on the corner of Lymington Road and Finchley Road. Located on the 5th Floor, this flat boasts three lovely size bedrooms, two bathrooms (1 ensuite) and a modern fitted kitchen. The flat benefits from a very spacious lounge surrounded by large windows with a private balcony big enough to entertain, porter and an allocated underground parking space. Further benefits include underfloor heating and a porter service as well as being a few minute's walk from transport (Jubilee and Metropolitan Lines) and the O2 Centre



# Pulse Apartments

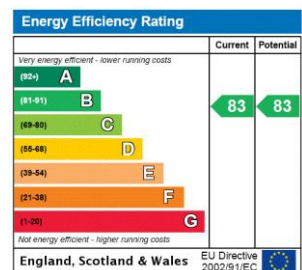
52 Lymington Road, NW6

- Lateral Living
- Underground Parking For One Car
- Pet Friendly
- Balcony
- 5th Floor
- Concierge





**Minimum Term:** 12 months  
**Deposit Required:** £4,846.15  
**Local Authority:** London Borough Of Camden  
**Council Tax Band:** G  
**EPC Rating:** B  
**Furnished**



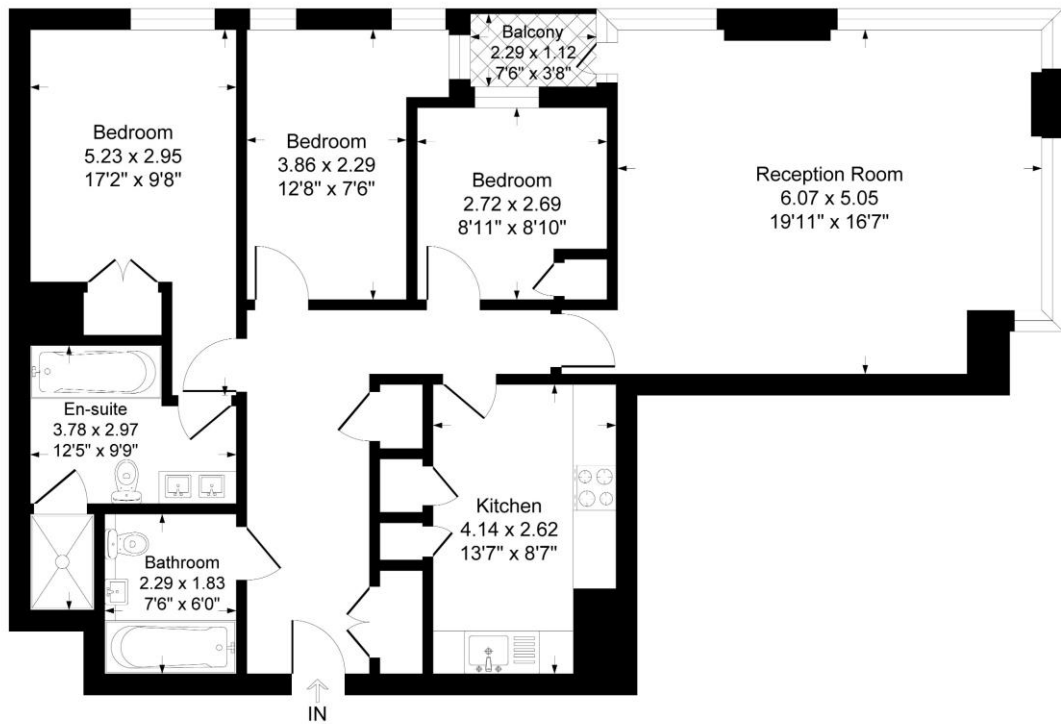
**Chestertons Hampstead Lettings**

55-56 Hampstead High Street  
 Hampstead  
 London  
 NW3 1QH  
 hampstead@chestertons.co.uk  
 02077941125  
 chestertons.co.uk

Additional tenant charges apply (fees apply to non-AST tenancies only)  
 Tenancy Agreement Fee: £300  
 References per Tenant/Guarantor: £60  
 Inventory check (approx. £100 – £250 inc. VAT)  
[chestertons.co.uk/property-to-rent/applicable-fees](http://chestertons.co.uk/property-to-rent/applicable-fees)

# Pulse Apartments, 52 Lymington Road, London, NW6

Approximate Gross Internal Floor Area = 102.6 sq m / 1105 sq ft



Fifth Floor

Illustration for identification purposes only, measurements are approximate, not to scale.

