



# Netherhall Gardens

Hampstead, NW3

£2,800 per month  
(£646.15 per week)

A delightful 2 bedroom ground floor apartment benefiting from communal gardens in this period conversion in Hampstead. The property is walking distance to the shops and amenities of Hampstead Village (Northern Line). Accommodation comprises reception room, kitchen, 2 bedrooms, family bathroom. Sole Agent.

**CHESTERTONS**



# Netherhall Gardens

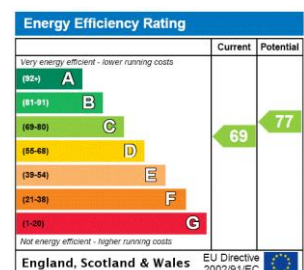
## Hampstead, NW3

- A Delightful Ground Floor Apartment
- 2 Bedrooms, 1 Bathroom, Reception, Kitchen
- Communal Gardens
- Situated in Period Conversion in Hampstead





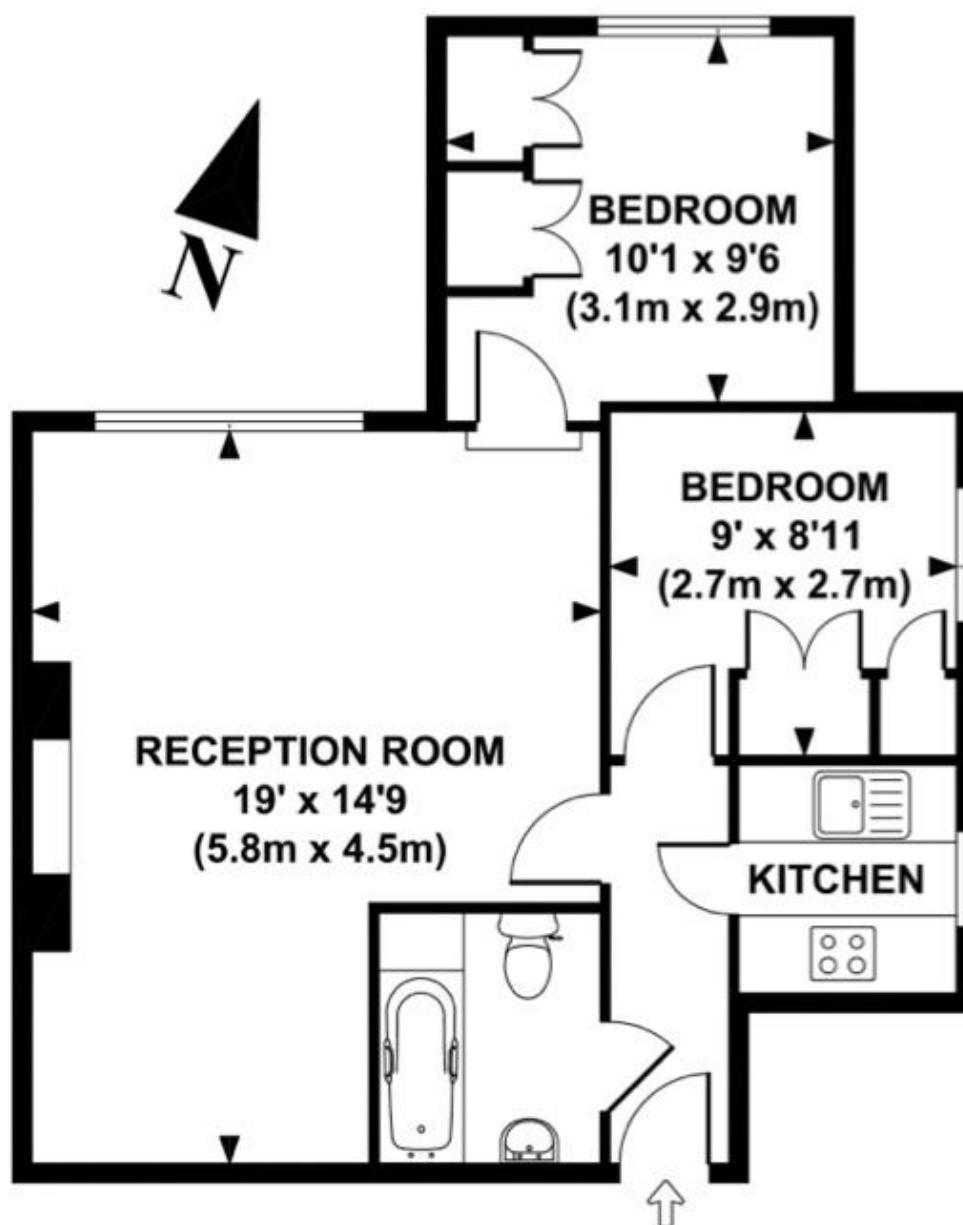
**Minimum Term:** 12 months  
**Deposit Required:** £3,230.77  
**Local Authority:** London Borough Of Camden  
**Council Tax Band:** D  
**EPC Rating:** C  
**Furnished**



### Chestertons Hampstead Lettings

55-56 Hampstead High Street  
 Hampstead  
 London  
 NW3 1QH  
[hampstead@chestertons.co.uk](mailto:hampstead@chestertons.co.uk)  
 02077941125  
[chestertons.co.uk](http://chestertons.co.uk)

Additional tenant charges apply (fees apply to non-AST tenancies only)  
 Tenancy Agreement Fee: £300  
 References per Tenant/Guarantor: £60  
 Inventory check (approx. £100 – £250 inc. VAT)  
[chestertons.co.uk/property-to-rent/applicable-fees](http://chestertons.co.uk/property-to-rent/applicable-fees)



**APPROX. GROSS INTERNAL FLOOR AREA 531 SQ FT / 50 SQ M**

