



Maresfield Gardens

Hampstead, NW3

£1,950 per month
(£450 per week)

A delightful 1st floor apartment with the benefit of communal gardens, high ceilings, original wood floors throughout, secondary glazing and plenty of storage in the loft. The property is set in this beautiful detached period building situated within walking distance to amenities of Hampstead Village (Northern Line). Accommodation comprises reception room, open plan fully fitted eat in kitchen, master bedroom with fitted wardrobes, luxury bathroom. Sole Agent.

CHESTERTONS



Maresfield Gardens

Hampstead, NW3

- Delightful 1st Floor Apartment in Detached Period Building
- 1 Bedroom, 1 Bathroom, Reception, Open Plan Kitchen
- High Ceilings, Original Wood Floors, Communal Gardens
- Walking distance to Restaurants/Amenities of Hampstead (Northern Line)



Minimum Term: 12 months
Deposit Required: £2,250.00
Local Authority: London Borough Of Camden
Council Tax Band: D
EPC Rating: D
Furnished, Unfurnished

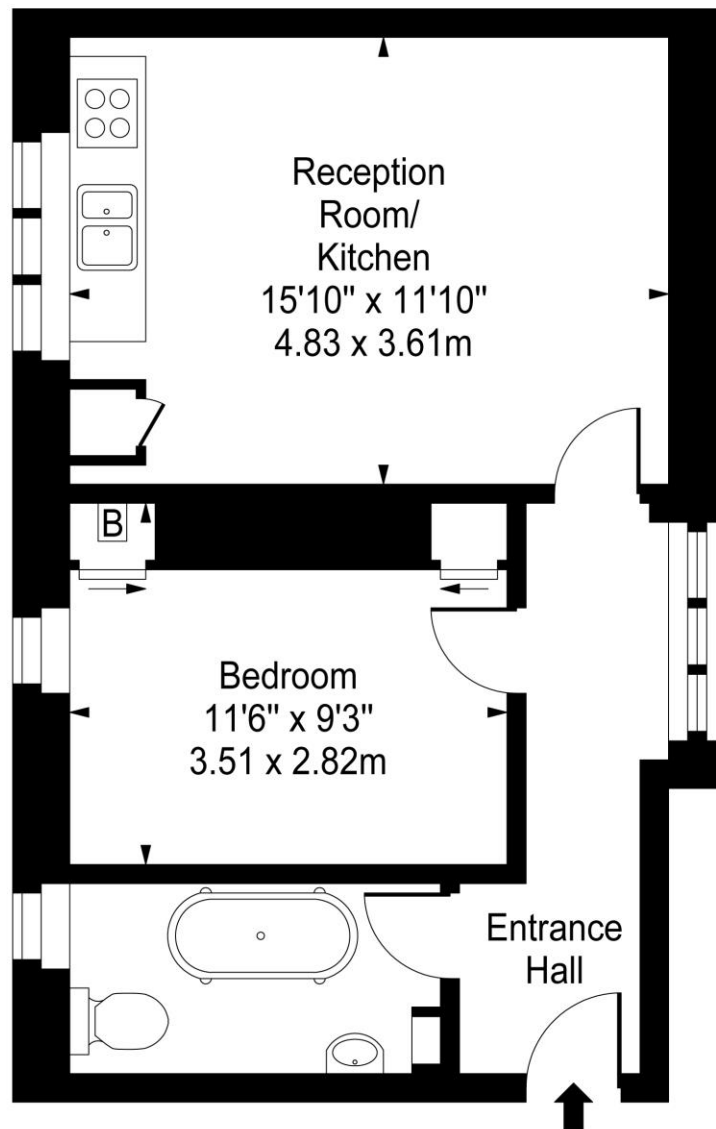
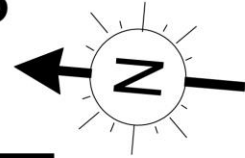
Energy Efficiency Rating		
	Current	Potential
Very energy efficient - lower running costs		
(92-100) A		
(81-91) B		
(69-80) C		
(55-68) D	63	75
(39-54) E		
(21-38) F		
(1-20) G		
Not energy efficient - higher running costs		
England, Scotland & Wales		EU Directive 2002/91/EC

Chestertons Hampstead Lettings

55-56 Hampstead High Street
 Hampstead
 London
 NW3 1QH
hampstead@chestertons.co.uk
 02077941125
chestertons.co.uk

Additional tenant charges apply (fees apply to non-AST tenancies only)
 Tenancy Agreement Fee: £300
 References per Tenant/Guarantor: £60
 Inventory check (approx. £100 – £250 inc. VAT)
chestertons.co.uk/property-to-rent/applicable-fees

Maresfield Gardens, NW3



First Floor

Approx Gross Internal Area **423 Sq Ft - 39.30 Sq M**

For Illustration Purposes Only - Not To Scale

www.goldlens.co.uk

Prepared for Chestertons

Ref. No. 005464J

