

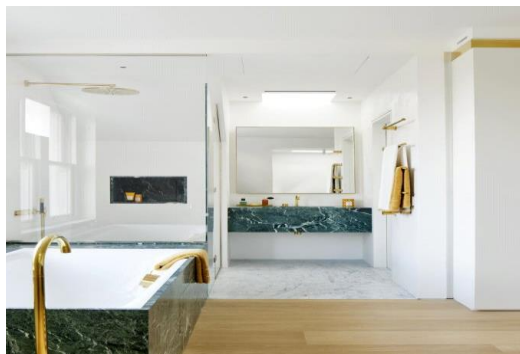
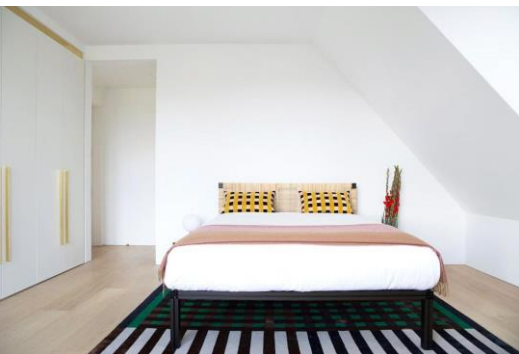


# Maresfield Gardens

Hampstead, NW3

£19,100 per month  
(£4,407.69 per week)

Short Let. An exceptional 2 double bedroom penthouse apartment with far reaching views across London and with direct lift access set in this smart building boasting under floor heating, engineered oak floors, state of the art Boffi kitchen, high ceilings, air conditioning, electronic blinds and curtains. The property is situated in this excellent location in Hampstead (Northern Line), walking distance to the shops and restaurants as well as within walking distance to Swiss Cottage (Jubilee Line). Accommodation comprises reception room, open plan fully fitted spacious eat in kitchen, 2 bedrooms all with en-suite, utility room. Sole Agent.



# Maresfield Gardens

## Hampstead, NW3

- Short Let. An Exceptional Penthouse Apartment in Smart Development
- 2 Bedrooms, 2 Bathrooms, Reception, Boffi Kitchen
- Lift Access, Oak Floors, Air Conditioning
- Excellent Location in Premier Road in Hampstead





**Minimum Term:** 1 months  
**Deposit Required:** £17,630.77  
**Local Authority:** London Borough Of Camden  
**Council Tax Band:** G  
**EPC Rating:** B  
**Furnished**

Energy Efficiency Rating		
	Current	Potential
Very energy efficient - lower running costs		
<b>A</b> (91-100)		
<b>B</b> (81-90)	86	86
<b>C</b> (69-80)		
<b>D</b> (55-68)		
<b>E</b> (39-54)		
<b>F</b> (21-38)		
<b>G</b> (1-20)		
Not energy efficient - higher running costs		
England, Scotland & Wales EU Directive 2002/91/EC		

### Chestertons Hampstead Lettings

55-56 Hampstead High Street  
 Hampstead  
 London  
 NW3 1QH  
[hampstead@chestertons.co.uk](mailto:hampstead@chestertons.co.uk)  
 02077941125  
[chestertons.co.uk](https://www.chestertons.co.uk)

Additional tenant charges apply (fees apply to non-AST tenancies only)  
 Tenancy Agreement Fee: £300  
 References per Tenant/Guarantor: £60  
 Inventory check (approx. £100 – £250 inc. VAT)  
[chestertons.co.uk/property-to-rent/applicable-fees](https://www.chestertons.co.uk/property-to-rent/applicable-fees)

## 6, 2 Maresfield Gardens, NW3

Gross internal area (approx.)

162 Sq m (1741 Sq ft) Including Under 1.5m

145 Sq m (1557 Sq ft) Excluding Under 1.5m

For identification only, Not to Scale

capital 020 8671 7722



Not to scale, for guidance only and must not be relied upon as a statement of fact. All measurements and areas are approximate only (and have been prepared in accordance with the current edition of the RICS Code of Measuring Practice).

