



Fawley Road

West Hampstead, NW6

£3,750 per month
(£865.38 per week)

VIDEO TOUR AVAILABLE. A truly magnificent refurbished 3 bedroom duplex apartment renovated to the highest of standards in Belsize Park. The property benefits from sound surround system, wood floors, plenty storage, roof terrace, loft style reception room with deep storage space. Accommodation comprises approximately 1900 sq ft as follows: double loft style reception room with roof terrace off, open fully fitted kitchen, dining room, master bedroom with fully fitted wardrobes and en-suite bathroom with and walk-in shower with under floor heating, double bedroom with fully fitted wardrobes and en-suite shower room, third bedroom/large study with wardrobes, family shower room with utility area. Located close to Swiss Cottage Underground (Jubilee Line) and Belsize Park. (Northern Line).



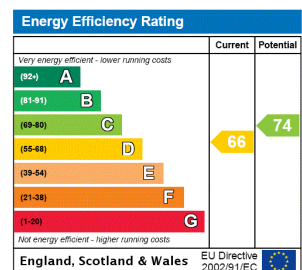
Fawley Road

West Hampstead, NW6

- A Magnificent High Spec Duplex Apartment
- 3 Bedrooms, 2 Bathrooms, Reception, Kitchen
- Garden, Wood Floors Throughout
- Excellent Location in West Hampstead



Minimum Term: 12 months
Deposit Required: £4,326.92
Local Authority: London Borough Of Camden
Council Tax Band: F
EPC Rating: D
Furnished

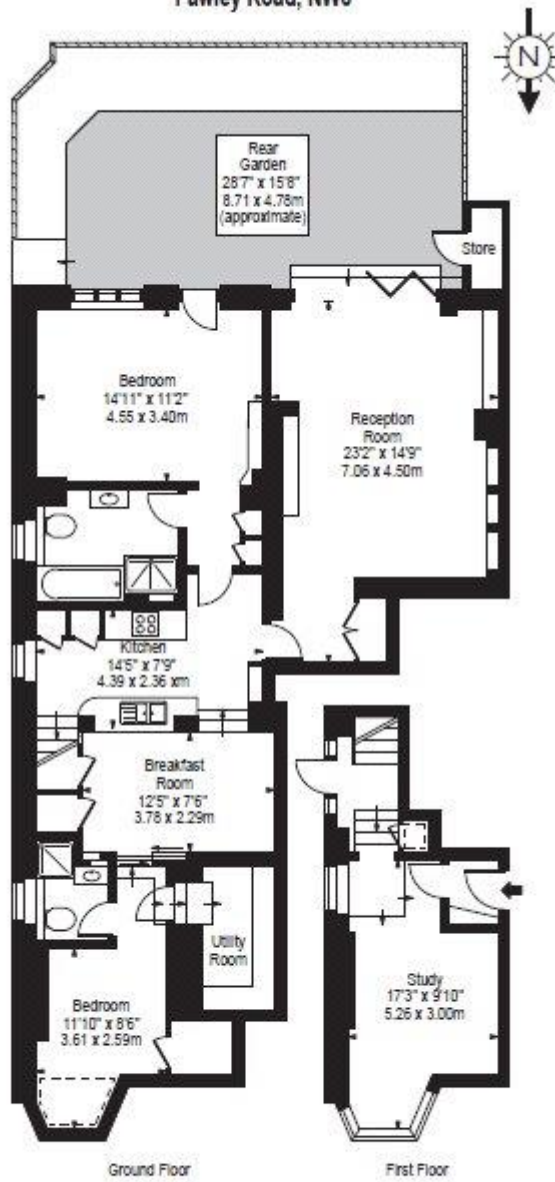


Chestertons Hampstead Lettings

55-56 Hampstead High Street
 Hampstead
 London
 NW3 1QH
 hampstead@chestertons.co.uk
 02077941125
 chestertons.co.uk

Additional tenant charges apply (fees apply to non-AST tenancies only)
 Tenancy Agreement Fee: £300
 References per Tenant/Guarantor: £60
 Inventory check (approx. £100 – £250 inc. VAT)
chestertons.co.uk/property-to-rent/applicable-fees

Fawley Road, NW6



Approx Gross Internal Area 1280 Sq Ft - 118.91 Sq M
(Excluding Store)

For Illustration Purposes Only - Not To Scale
Floor plan by www.nogaphotostudio.com
Ref: No. 626

