



Newmount

11 Lyndhurst Terrace, NW3

£2,100 per month
(£484.62 per week)

A delightful ground floor apartment in this purpose built block boasting a south facing private patio and manicured communal gardens, wood floors throughout and plenty of storage, intercom system. The property is situated in this premier road in Hampstead within walking distance to the shops and restaurants. Accommodation comprises reception room and dining area with doors leading directly onto the patio, ultra modern open plan fully fitted kitchen with breakfast bar, double bedroom with fitted wardrobes, marble bathroom. Sole Agent.



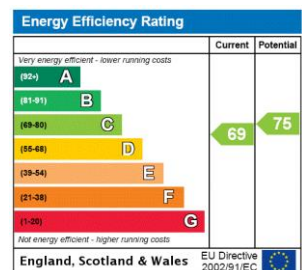
Newmount

11 Lyndhurst Terrace, NW3

- A Delightful Ground Floor Apartment in Purpose Built Block
- 1 Bedroom, 1 Bathroom, Reception, Open Plan Kitchen
- Large South Facing Private Patio, Communal Gardens, Wood Floors
- Situated in this Premier Road in the Heart of Hampstead Village (Northern Line)



Minimum Term: 18 months
Deposit Required: £2,423.08
Local Authority: London Borough Of Camden
Council Tax Band: E
EPC Rating: C
Furnished

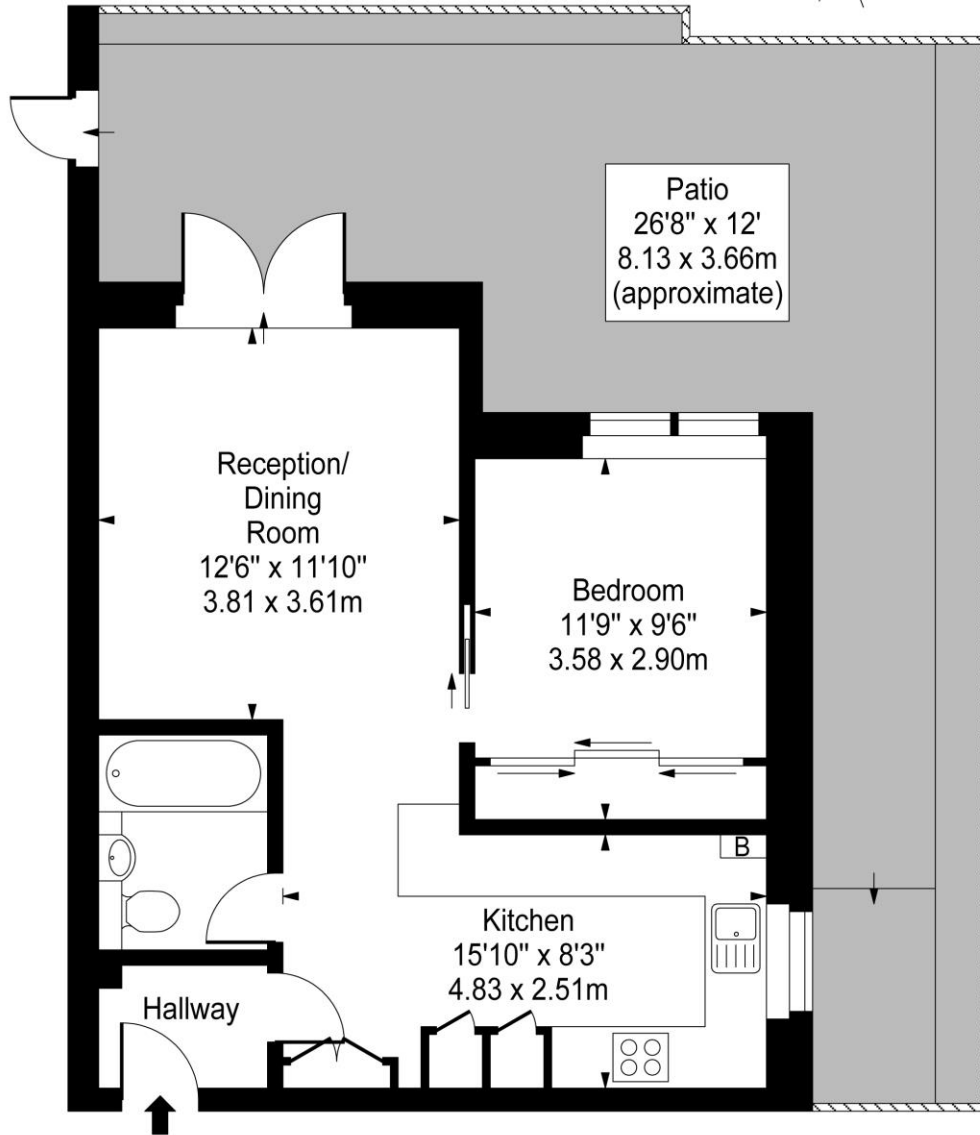
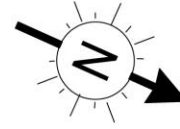


Chestertons Hampstead Lettings

55-56 Hampstead High Street
 Hampstead
 London
 NW3 1QH
 hampstead@chestertons.co.uk
 02077941125
 chestertons.co.uk

Additional tenant charges apply (fees apply to non-AST tenancies only)
 Tenancy Agreement Fee: £300
 References per Tenant/Guarantor: £60
 Inventory check (approx. £100 – £250 inc. VAT)
chestertons.co.uk/property-to-rent/applicable-fees

Newmount, Lyndhurst Terrace, NW3



Lower Ground Floor

Approx Gross Internal Area **500 Sq Ft - 46.45 Sq M**

For Illustration Purposes Only - Not To Scale

www.goldlens.co.uk

Prepared for Chestertons

Ref. No. 006562M

