



Britten Close

Golders Green, NW11

£2,600 per month
(£600 per week)

A lovely 2 double bedroom 1st floor apartment in this modern purpose built block with a small balcony and communal gardens and with the benefit of an underground parking space. The property is situated on the edge of Hampstead Heath, walking distance to the amenities and shops of Golders Green (Northern Line). Accommodation comprises reception room, fully fitted kitchen, master bedroom with en-suite bathroom, 2nd double bedroom, family bathroom.



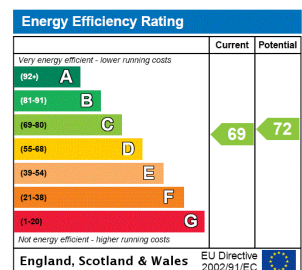
Britten Close

Golders Green, NW11

- A Lovely 1st Floor Apartment in Purpose Built Block
- 2 Bedrooms, 2 Bathrooms, Reception, Kitchen
- Small Balcony, Communal Gardens, Underground Parking
- Situated on the Edge of Hampstead Heath, Walking Distance to Golders Green (Northern Line)



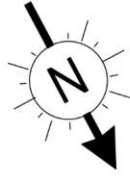
Minimum Term: 18 months
Deposit Required: £3,000.00
Local Authority: London Borough Of Barnet
Council Tax Band: E
EPC Rating: C
Furnished



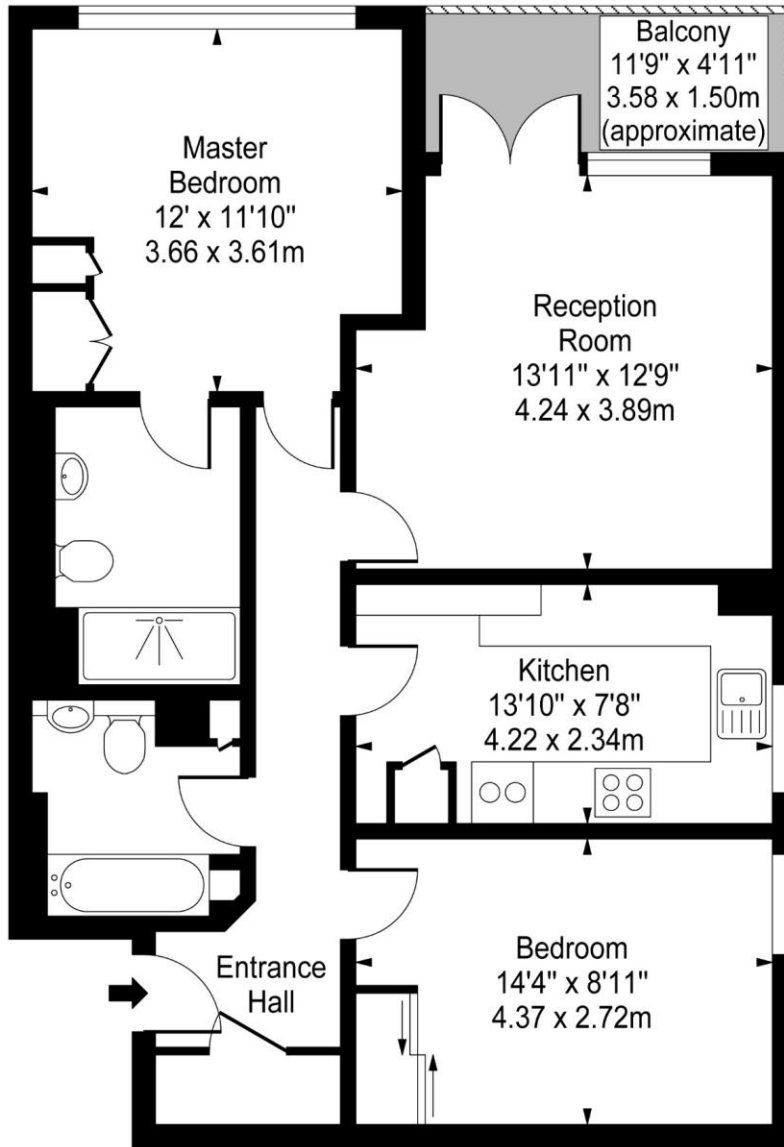
Chestertons Hampstead Lettings

55-56 Hampstead High Street
Hampstead
London
NW3 1QH
hampstead@chestertons.co.uk
02077941125
chestertons.co.uk

Additional tenant charges apply (fees apply to non-AST tenancies only)
Tenancy Agreement Fee: £300
References per Tenant/Guarantor: £60
Inventory check (approx. £100 – £250 inc. VAT)
chestertons.co.uk/property-to-rent/applicable-fees



Britten Close, Golders Green, NW11



Ground Floor

Approx Gross Internal Area **760 Sq Ft - 70.60 Sq M**

For Illustration Purposes Only - Not To Scale

www.goldlens.co.uk

Prepared for Chestertons

Ref. No. 008540N

