

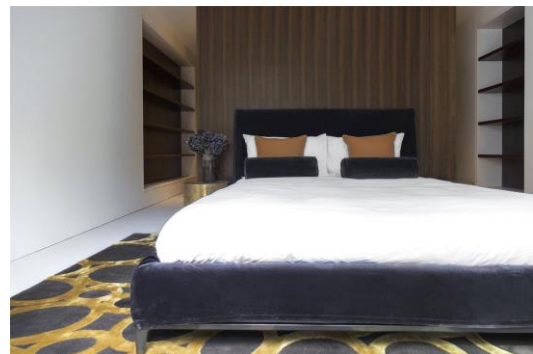
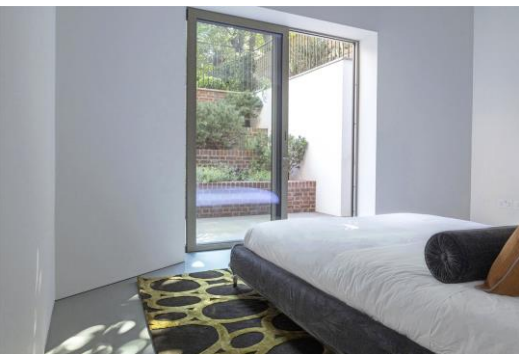


Maresfield Gardens

Hampstead, NW3

£20,700 per month
(£4,776.92 per week)

Short Let. A highly refurbished 2 bedroom Coach House with its own front door at the side of this brand new building with an off-street parking space and electric charger. The property is set over 3 storeys and comprises 2 spacious bedrooms and a beautiful private garden. This exceptional property boasts underfloor heating, engineered oak floors, state of the art Boffi kitchen, high ceilings, air conditioning, electronic blinds and curtains. The property is situated in this excellent location in Hampstead (Northern Line), walking distance to the the shops and restaurants as well as within walking distance to Swiss Cottage (Jubilee Line). Accommodation comprises reception room, open plan fully fitted spacious eat in kitchen, 2 bedrooms all with en-suite, utility room. Council Tax to be determined. Sole Agent.



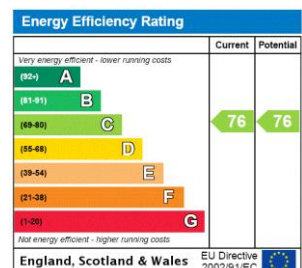
Maresfield Gardens

Hampstead, NW3

- Short Let. Refurbished Coach House with Own Front Door
- 2 Bedrooms, 2 Bathrooms, Reception, Boffi Kitchen
- Off Street Parking, Private Garden, Air Conditioning, Engineered Oak Floors
- Situated in Premier Road in Hampstead, Walking Distance to Swiss Cottage (Jubilee Line)



Minimum Term: 1 months
Deposit Required: £19,107.69
Local Authority: London Borough Of Camden
Council Tax Band: G
EPC Rating: C
Furnished, Unfurnished



Chestertons Hampstead Lettings

55-56 Hampstead High Street
 Hampstead
 London
 NW3 1QH
 lettings.hampstead@chestertons.co.uk
 02077941125
 chestertons.co.uk

Additional tenant charges apply (fees apply to non-AST tenancies only)
 Tenancy Agreement Fee: £300
 References per Tenant/Guarantor: £60
 Inventory check (approx. £100 – £250 inc. VAT)
chestertons.co.uk/property-to-rent/applicable-fees

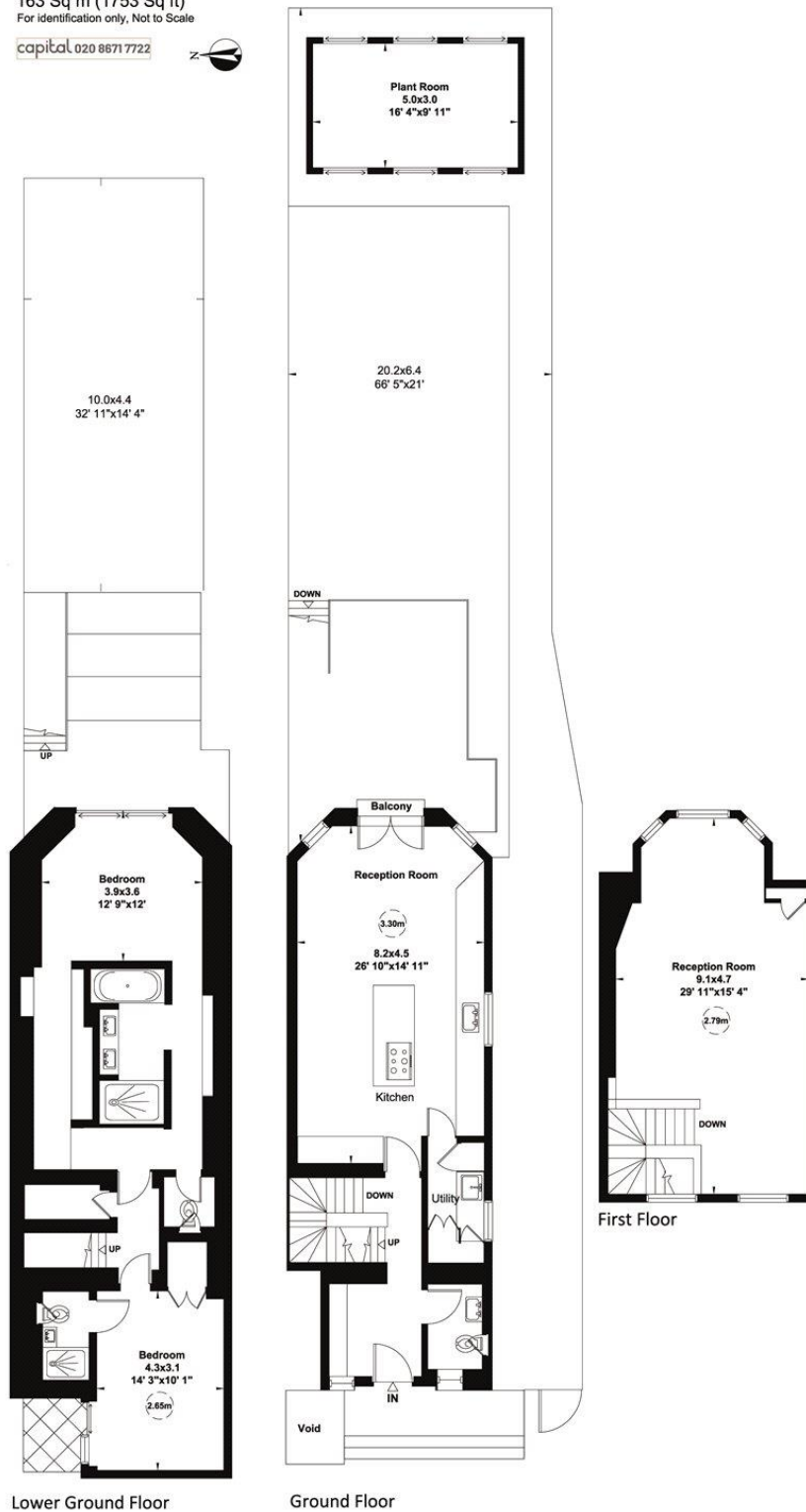
3, 2 Maresfield Gardens, NW3

Gross internal area (approx.)

163 Sq m (1753 Sq ft)

For identification only, Not to Scale

capital 020 8671 7722



Not to scale, for guidance only and must not be relied upon as a statement of fact. All measurements and areas are approximate only (and have been prepared in accordance with the current edition of the RICS Code of Measuring Practice).

Chesterton Global Ltd trading as Chestertons for themselves and for the vendor of this property whose agents they are, give notice that (i) these particulars do not constitute any part of an offer or contract, (ii) all statements contained within these particulars are made without responsibility on the part of Chestertons or the vendor, (iii) whilst made in good faith, none of the statements contained within these particulars are to be relied upon as a statement or representation of fact, (iv) any intending purchasers must satisfy themselves by inspection or otherwise as to the correctness of each of the statements contained within these particulars, (v) the vendor does not make or give either Chestertons or any person in their employment any authority to make or give representation or warranty whatsoever in relation to this property. Wide angle lenses may be used. ©Copyright Chestertons | Chesterton Global Ltd | Registered Office 40 Connaught Street, Hyde Park, London W2 2AB Registered Company Number 05334580.



This paper is 100% recyclable