



# Maryon Mews

## South End Green, NW3

£6,000 per month  
(£1,384.62 per week)

Short Let. A contemporary style 2 bedroom apartment on the 1st and 2nd floors of this modern gated development boasting a private roof terrace and plenty of storage. The property is situated in South End Green, ideally located for Hampstead Overground Station and equidistant between Hampstead Village and Belsize Park. Accommodation comprises 1st floor spacious reception room, open plan fully fitted eat in kitchen, private roof terrace 2nd floor: master bedroom, double bedroom, family bathroom.





# Maryon Mews

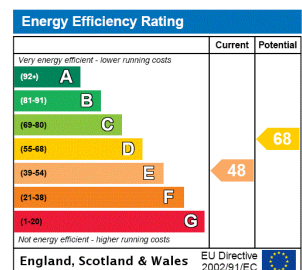
## South End Green, NW3

- Short Let. A Contemporary Style Apartment on the 1st/2nd Floors of Gated Development
- 2 Bedrooms, 1 Bathroom, Reception, Open Plan Fully Fitted Kitchen
- Private Roof Terrace, Plenty of Storage
- Situated in South End Green, Ideally Located for Hampstead Overground Station, Equidistant Between Hampstead Village and Belsize Park





**Minimum Term:** 1 months  
**Deposit Required:** £5,538.46  
**Local Authority:** London Borough Of Camden  
**Council Tax Band:** F  
**EPC Rating:** E  
**Unfurnished**

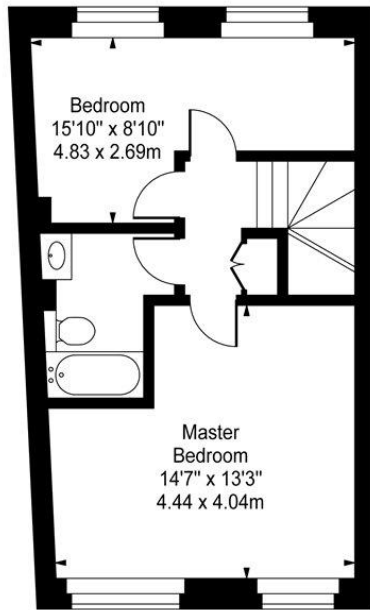
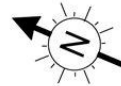


### *Chestertons Hampstead Lettings*

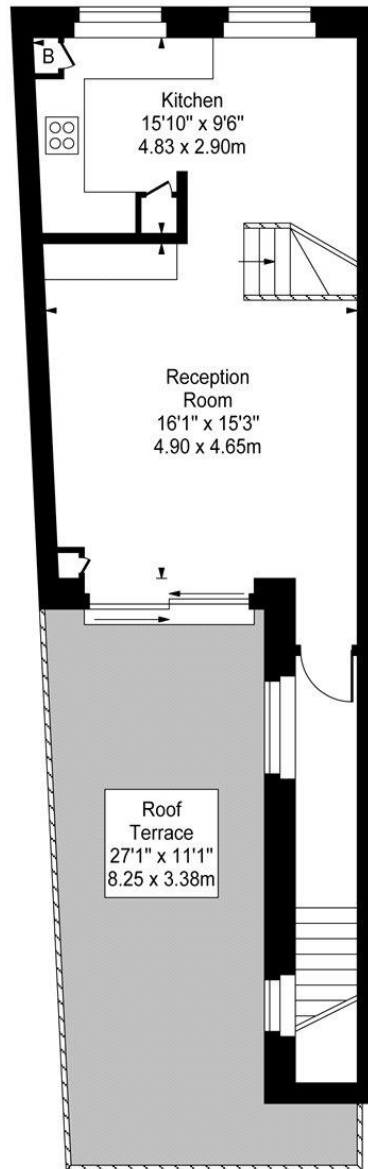
55-56 Hampstead High Street  
 Hampstead  
 London  
 NW3 1QH  
 hampstead@chestertons.co.uk  
 02077941125  
 chestertons.co.uk

Additional tenant charges apply (fees apply to non-AST tenancies only)  
 Tenancy Agreement Fee: £300  
 References per Tenant/Guarantor: £60  
 Inventory check (approx. £100 – £250 inc. VAT)  
[chestertons.co.uk/property-to-rent/applicable-fees](http://chestertons.co.uk/property-to-rent/applicable-fees)

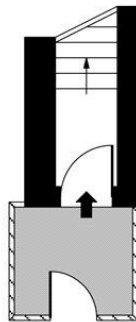
Maryon Mews, NW3



Second Floor



First Floor



Ground Floor Entrance

Approx Gross Internal Area **900 Sq Ft - 83.61 Sq M**

For Illustration Purposes Only - Not To Scale

[www.goldlens.co.uk](http://www.goldlens.co.uk)

Prepared for Chestertons

Ref. No. 005412.1J

