



Holly Mount

Hampstead, NW3

£3,500 per month
(£807.69 per week)

VIDEO TOUR AVAILABLE. A unique 3 bedroom terraced town house with numerous period features, a private garden and amazing views over London. The property is situated in this excellent location in a quiet location in Hampstead. Accommodation comprises reception room with doors leading to the garden, fully fitted eat in kitchen, 2 double bedrooms, single bedroom, family bathroom. Sole Agent.



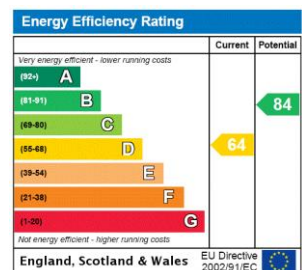
Holly Mount

Hampstead, NW3

- A Unique Terraced Town House
- 3 Bedrooms, 1 Bathroom, Reception, Eat in Kitchen
- Amazing Views, Period Features, Private Garden
- Excellent Location in Quiet Location in Hampstead



Minimum Term: 18 months
Deposit Required: £4,038.46
Local Authority: London Borough Of Camden
Council Tax Band: G
EPC Rating: D
Part Furnished



Chestertons Hampstead Lettings

55-56 Hampstead High Street
 Hampstead
 London
 NW3 1QH
 hampstead@chestertons.co.uk
 02077941125
 chestertons.co.uk

Additional tenant charges apply (fees apply to non-AST tenancies only)
 Tenancy Agreement Fee: £300
 References per Tenant/Guarantor: £60
 Inventory check (approx. £100 – £250 inc. VAT)
chestertons.co.uk/property-to-rent/applicable-fees



Hampstead, NW3

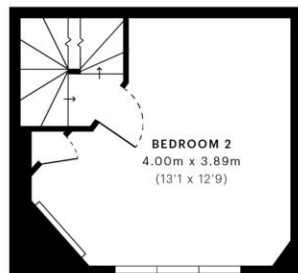
CAPTURE DATE 13/12/2022 LASER-SCAN POINTS 80,059,717

GROSS INTERNAL AREA

80.97 sqm / 871.55 sqft



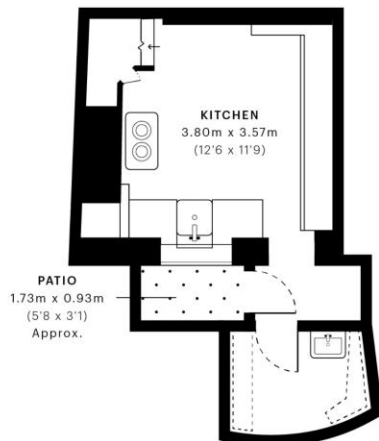
— Third Floor



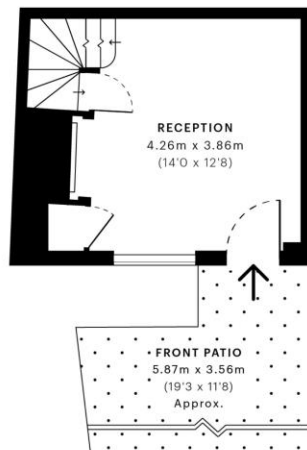
— Second Floor



— First Floor



— Lower Ground Floor



— Ground Floor



GROSS INTERNAL AREA (GIA)
The footprint of the property
80.97 sqm / 871.55 sqft



NET INTERNAL AREA (NIA)
Excludes walls and external features
Includes washrooms, restricted head height
71.20 sqm / 766.39 sqft



EXTERNAL STRUCTURAL FEATURES
Balconies, terraces, verandas etc.
0.00 sqm / 0.00 sqft



RESTRICTED HEAD HEIGHT
Limited use area under 1.5 m
1.09 sqm / 11.73 sqft



Spec Verified floor plans are produced in accordance with Royal Institution of Chartered Surveyors' Property Measurement Standards. Plots and gardens are illustrative only and excluded from all area calculations. Due to rounding, numbers may not add up precisely. All measurements shown for the individual room lengths and widths are the maximum points of measurements captured in the scan.

IPMS 2B RESIDENTIAL 74.26 sqm / 800.43 sqft
IPMS 3C RESIDENTIAL 71.84 sqm / 773.29 sqft

SPEC ID 563974fb3f2a5850e3fd8426c

