



# Netherhall Gardens

Hampstead, NW3

£2,850 per month  
(£657.69 per week)

\*VIDEO TOUR AVAILABLE\*. A delightful 2 bedroom apartment on the 1st floor of this period building with double volume ceiling heights. The property is situated in this excellent location in Hampstead (Northern Line) walking distance to the smart shops and restaurants. Accommodation comprises reception room, open plan fully fitted kitchen, double bedroom with fitted wardrobes, small double bedroom/study, shower room. Sole Agent.



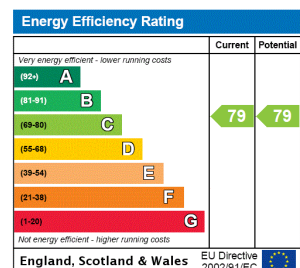
# Netherhall Gardens

## Hampstead, NW3

- A Delightful 1st Floor Apartment in Period Building
- 2 Bedrooms, 1 Bathroom, Reception, Open Plan Kitchen
- Double Volume Ceiling Heights
- Situated in Excellent Location in Hampstead



**Minimum Term:** 18 months  
**Deposit Required:** £3,288.46  
**Local Authority:** London Borough Of Camden  
**Council Tax Band:** F  
**EPC Rating:** C  
**Furnished**



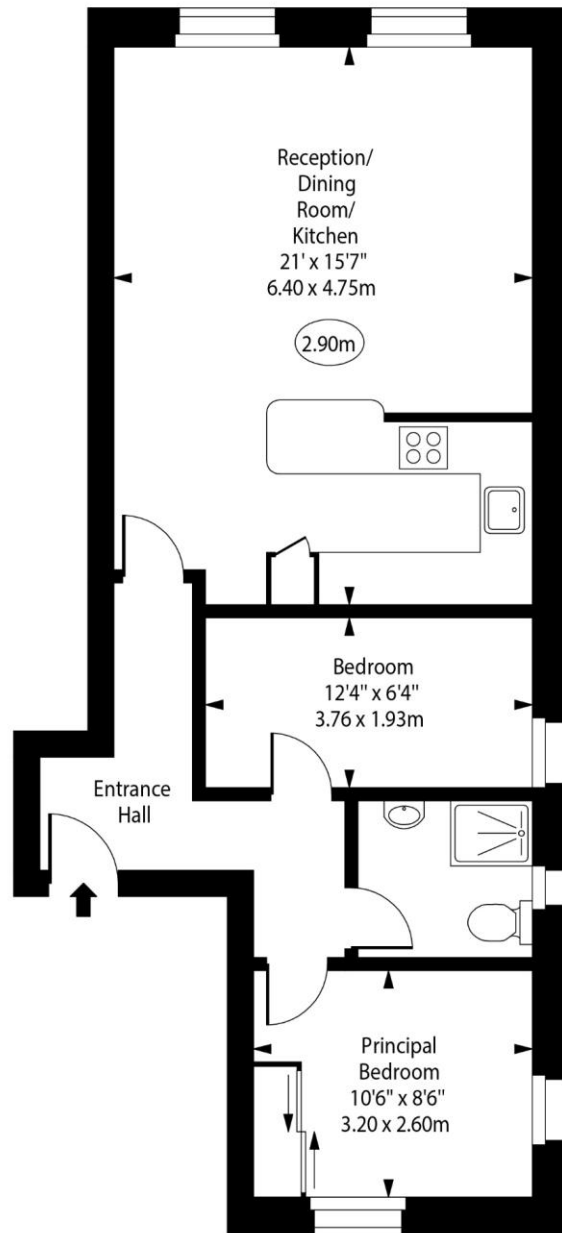
### *Chestertons Hampstead Lettings*

55-56 Hampstead High Street  
 Hampstead  
 London  
 NW3 1QH  
[hampstead@chestertons.co.uk](mailto:hampstead@chestertons.co.uk)  
 02077941125  
[chestertons.co.uk](http://chestertons.co.uk)

Additional tenant charges apply (fees apply to non-AST tenancies only)  
 Tenancy Agreement Fee: £300  
 References per Tenant/Guarantor: £60  
 Inventory check (approx. £100 – £250 inc. VAT)  
[chestertons.co.uk/property-to-rent/applicable-fees](http://chestertons.co.uk/property-to-rent/applicable-fees)

# Netherhall Gardens, Hampstead, NW3

○ - Ceiling Height



First Floor

Approx Gross Internal Area 630 Sq Ft - 58.53 Sq M

For Illustration Purposes Only - Not To Scale

[www.goldlens.co.uk](http://www.goldlens.co.uk)

Prepared for Chestertons

Ref. No. 0246431G

