



# Denning Road

Hampstead, NW3

£6,750 per month  
(£1,557.69 per week)

An immaculate bright and airy 3 double bedroom maisonette on the top 3 floors with its own entrance boasting a decked terrace and video entry phone. The property is situated in this premier location in Hampstead Village, walking distance to the fashionable shops and restaurants. Accommodation comprises 1st floor: reception room and dining area with south facing dual aspect, open plan fully fitted kitchen, study 2nd floor: master bedroom with en-suite bathroom and walk in wardrobe, further double bedroom with fitted wardrobes and lovely views across London, family bathroom 3rd floor: spacious double bedroom with en-suite shower room and bi folding doors leading directly to the south facing terrace.



# Denning Road

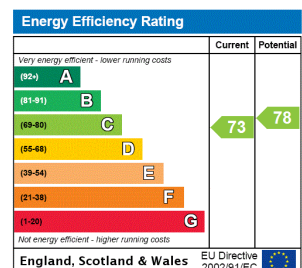
## Hampstead, NW3

- An Immaculate Maisonette on Top 3 Floors with Own Entrance
- 3 Bedrooms, 3 Bathrooms, Reception, Open Plan Fully Fitted Kitchen
- South Facing Terrace, Video Entry Phone
- Premier Location in Hampstead Village, Walking Distance to the Fashionable Shops/Restaurants.





**Minimum Term:** 18 months  
**Deposit Required:** £9,346.15  
**Local Authority:** London Borough Of Camden  
**Council Tax Band:** G  
**EPC Rating:** C  
**Unfurnished**

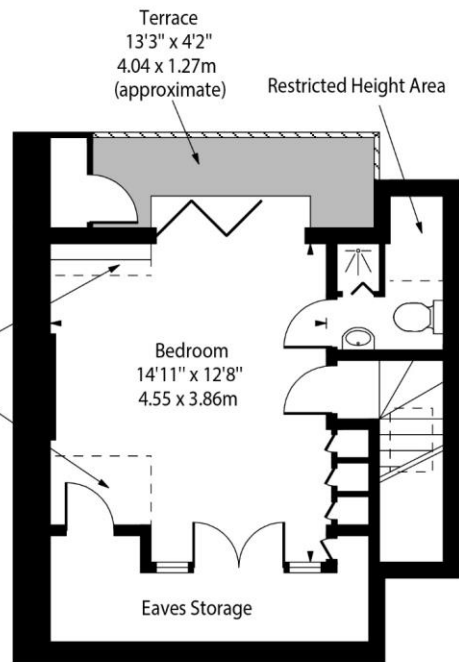
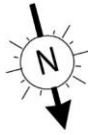


### *Chestertons Hampstead Lettings*

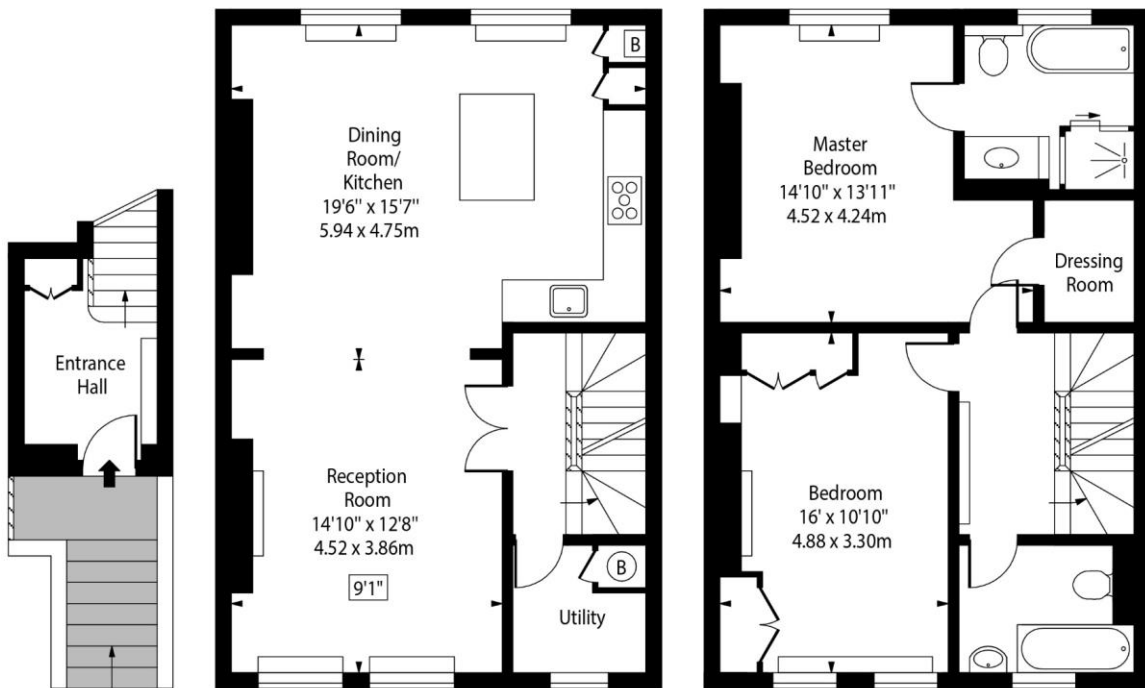
55-56 Hampstead High Street  
 Hampstead  
 London  
 NW3 1QH  
 hampstead@chestertons.co.uk  
 02077941125  
 chestertons.co.uk

Additional tenant charges apply (fees apply to non-AST tenancies only)  
 Tenancy Agreement Fee: £300  
 References per Tenant/Guarantor: £60  
 Inventory check (approx. £100 – £250 inc. VAT)  
[chestertons.co.uk/property-to-rent/applicable-fees](http://chestertons.co.uk/property-to-rent/applicable-fees)

Denning Road,  
Hampstead, NW3



Third Floor



Upper Ground  
Floor Entrance

First Floor

Second Floor

Approx Gross Internal Area 1641 Sq Ft - 152.45 Sq M

(Including Restricted Height Area & Eaves Area)

For Illustration Purposes Only - Not To Scale

