



West Hill Park

Highgate, N6

£13,000 per month
(£3,000 per week)

VIDEO TOUR AVAILABLE. Short Let. A beautiful 4 bedroom family house which has been architecturally designed by the renowned architect Ted Levy set over 2 floors in this exclusive private gated development. The property benefits from a front and rear garden, communal gardens and off street parking on a 1st come 1st serve basis. West Hill Park is nestled within the Highgate Conservation Area and is conveniently located for the shops and restaurants of Highgate Village. Accommodation comprises ground: reception room, dining room, fully fitted kitchen, guest WC
1st floor: master bedroom with en-suite bathroom, 3 further bedrooms, family bathroom. Sole Agent.



West Hill Park

Highgate, N6

- Short Let. An Architecturally Designed Family House By the Award Winning Architect Ted Levy
- 4 Bedrooms, 2 Bathrooms, 2 Receptions, Kitchen
- Private Gated Development, Parking
- West Hill Park is Nestled Within the Highgate Conservation Area Conveniently Located for the Shops and Restaurants of Highgate Village



Minimum Term: 1 months
Deposit Required: £12,000.00
Local Authority: London Borough Of Camden
Council Tax Band: H
EPC Rating: D
Furnished

Energy Efficiency Rating		Current	Potential
Very energy efficient - lower running costs			
(92-100)	A		
(81-91)	B		82
(69-80)	C		
(55-68)	D	65	
(39-54)	E		
(21-38)	F		
(1-20)	G		
Not energy efficient - higher running costs			
England, Scotland & Wales		EU Directive 2002/91/EC	

Chestertons Hampstead Lettings

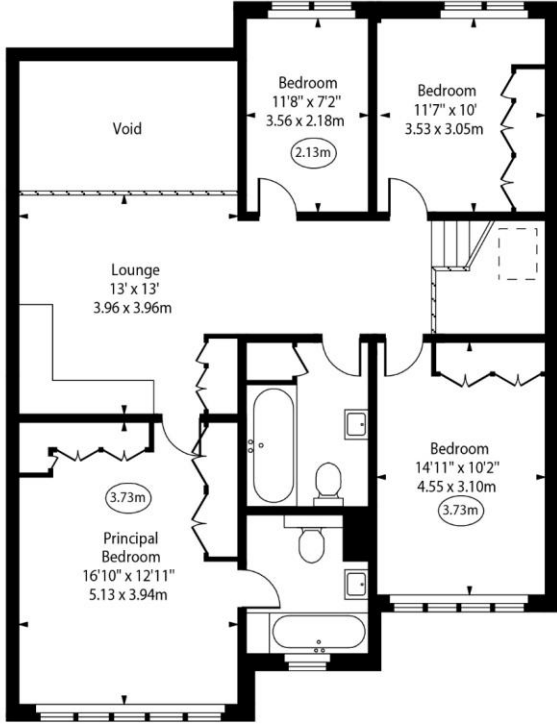
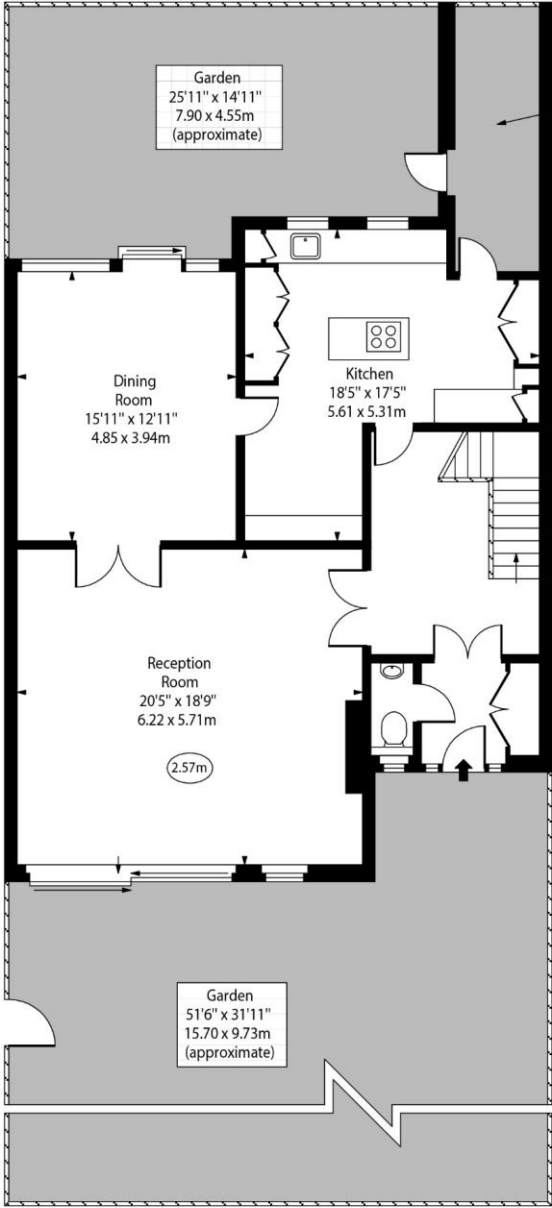
55-56 Hampstead High Street
 Hampstead
 London
 NW3 1QH
 hampstead@chestertons.co.uk
 02077941125
 chestertons.co.uk

Additional tenant charges apply (fees apply to non-AST tenancies only)
 Tenancy Agreement Fee: £300
 References per Tenant/Guarantor: £60
 Inventory check (approx. £100 – £250 inc. VAT)
[chestertons.co.uk/property-to-rent/applicable-fees](https://www.chestertons.co.uk/property-to-rent/applicable-fees)

West Hill Park,
Highgate, N6



○ - Ceiling Height



Ground Floor

First Floor

Approx Gross Internal Area 2102 Sq Ft - 195.28 Sq M
(Excluding Void)

For Illustration Purposes Only - Not To Scale
www.goldlens.co.uk
Prepared for Chestertons
Ref. No. 024424E

Chesterton Global Ltd trading as Chestertons for themselves and for the vendor of this property whose agents they are, give notice that (i) these particulars do not constitute any part of an offer or contract, (ii) all statements contained within these particulars are made without responsibility on the part of Chestertons or the vendor, (iii) whilst made in good faith, none of the statements contained within these particulars are to be relied upon as a statement or representation of fact, (iv) any intending purchasers must satisfy themselves by inspection or otherwise as to the correctness of each of the statements contained within these particulars, (v) the vendor does not make or give either Chestertons or any person in their employment any authority to make or give representation or warranty whatsoever in relation to this property. Wide angle lenses may be used. ©Copyright Chestertons | Chesterton Global Ltd | Registered Office 40 Connaught Street, Hyde Park, London W2 2AB Registered Company Number 05334580.



This paper is 100% recyclable