



# Westfield

15 Kidderpore Avenue, NW3

£5,350 per month  
(£1,234.62 per week)

\*VIDEO TOUR AVAILABLE\*. A highly refurbished 3 bedroom 2nd floor apartment in this luxury development boasting wood floors, south facing wrap around terrace and brand new carpets in the bedrooms. The development boasts 24 hour concierge, gym, swimming pool, lift, tandem underground parking for 2 cars and beautiful communal gardens. The property is situated within close proximity to Hampstead Village and walking distance to the amenities of Finchley Road (Jubilee Line). Accommodation comprises entrance hall with wood floors, double reception room and dining room with access to the terrace, brand new fully fitted kitchen, master bedroom with fitted wardrobes and en-suite marble bathroom and direct access to the terrace, 2 further double bedrooms both with fitted wardrobes and access to the terrace, storage room, marble shower room. Water included in the rent. gym and swimming pool in Hampstead. Water included in the rent.



# Westfield

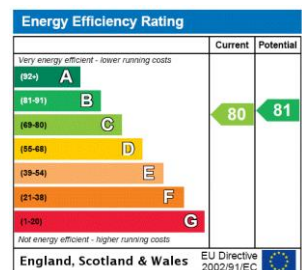
15 Kidderpore Avenue, NW3

- A Highly Refurbished 2nd Floor Apartment in Luxury Development
- 3 Bedrooms, 2 Bathrooms, Reception, Kitchen
- 24 Hour Porterage, Gymnasium, Swimming Pool, Tandem Parking for 2 Cars, South Facing Terrace, Water Included in the Rent
- Situated in Hampstead (Northern Line), Short Walk to Underground (Jubilee Line) and Overground Links into the City



bedrooms both with fitted wardrobes and access to the terrace, storage room, marble shower room. Water included in the rent.

**Minimum Term:** 18 months  
**Deposit Required:** £6,173.08  
**Local Authority:** London Borough Of Camden  
**Council Tax Band:** G  
**EPC Rating:** C  
**Unfurnished**



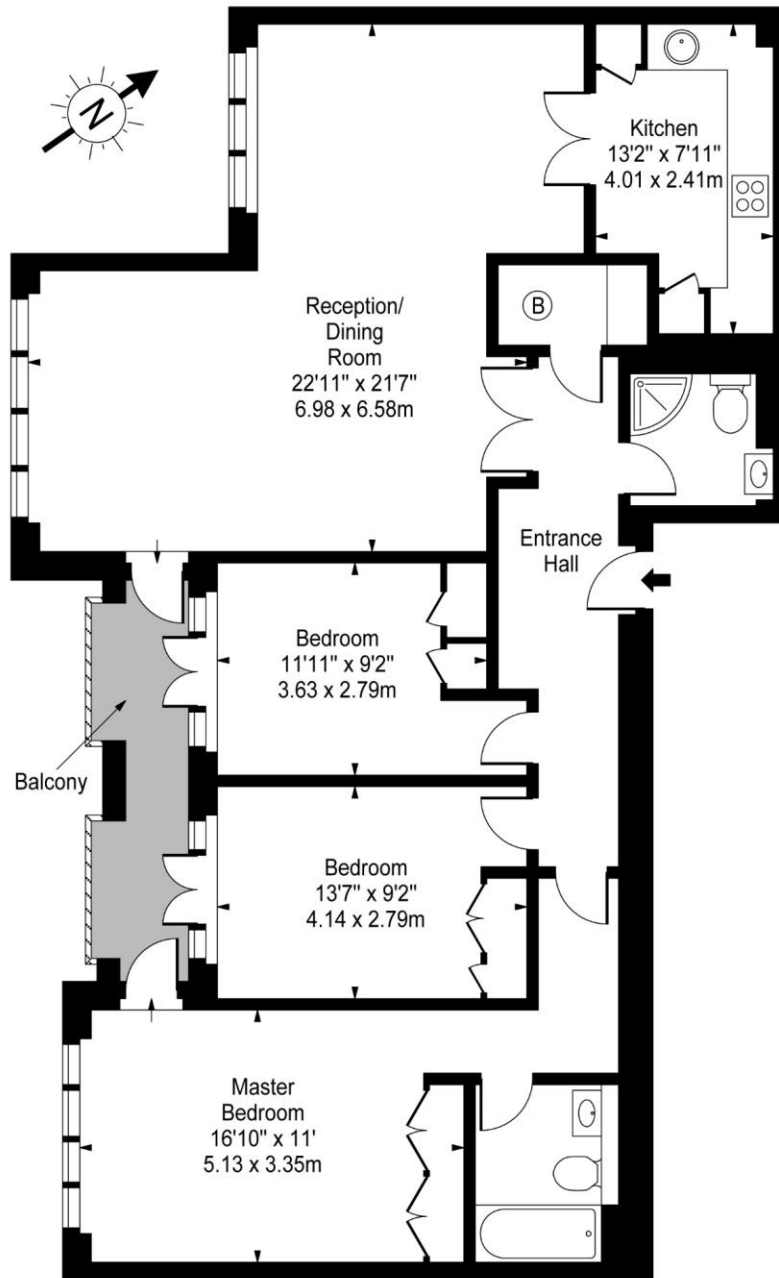
### Chestertons Hampstead Lettings

55-56 Hampstead High Street  
 Hampstead  
 London  
 NW3 1QH  
 hampstead@chestertons.co.uk  
 02077941125  
 chestertons.co.uk

Additional tenant charges apply (fees apply to non-AST tenancies only)  
 Tenancy Agreement Fee: £300  
 References per Tenant/Guarantor: £60  
 Inventory check (approx. £100 – £250 inc. VAT)  
[chestertons.co.uk/property-to-rent/applicable-fees](http://chestertons.co.uk/property-to-rent/applicable-fees)



**Elm House,  
Westfield,  
Kidderpore Avenue, NW3**



Second Floor

Approx Gross Internal Area **1243 Sq Ft - 115.47 Sq M**

For Illustration Purposes Only - Not To Scale

[www.goldlens.co.uk](http://www.goldlens.co.uk)

Prepared for Chestertons

Ref. No. 010127J

