



Haverstock Hill

Belsize Park, NW3

£4,000 per month
(£923.08 per week)

VIDEO TOUR AVAILABLE. A spacious and newly renovated 3 bedroom apartment boasting wood floors, conservatory and access to a private rear garden. The property is situated in this excellent location within walking distance to the shops and restaurants of Belsize Park and walking distance to the fashionable open spaces and shops in Primrose Hill. Accommodation comprises reception room with conservatory off, open plan fully fitted kitchen, master bedroom with en-suite shower room, double bedroom with fitted wardrobes, single bedroom, family bathroom. Sole Agent.



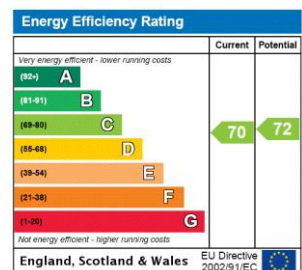
Haverstock Hill

Belsize Park, NW3

- A Spacious Garden Apartment in Period Building
- 3 Bedrooms, 2 Bathrooms, Reception, Open Plan Kitchen
- Wood Floors, Conservatory, Access to Private Rear Garden
- Situated in Excellent Location Walking Distance to the Shops/Restaurants of Belsize Park and Close to the Fashionable Open Spaces and Shops in Primrose Hill



Minimum Term: 12 months
Deposit Required: £4,615.38
Local Authority: London Borough Of Camden
Council Tax Band: E
EPC Rating: C
Unfurnished

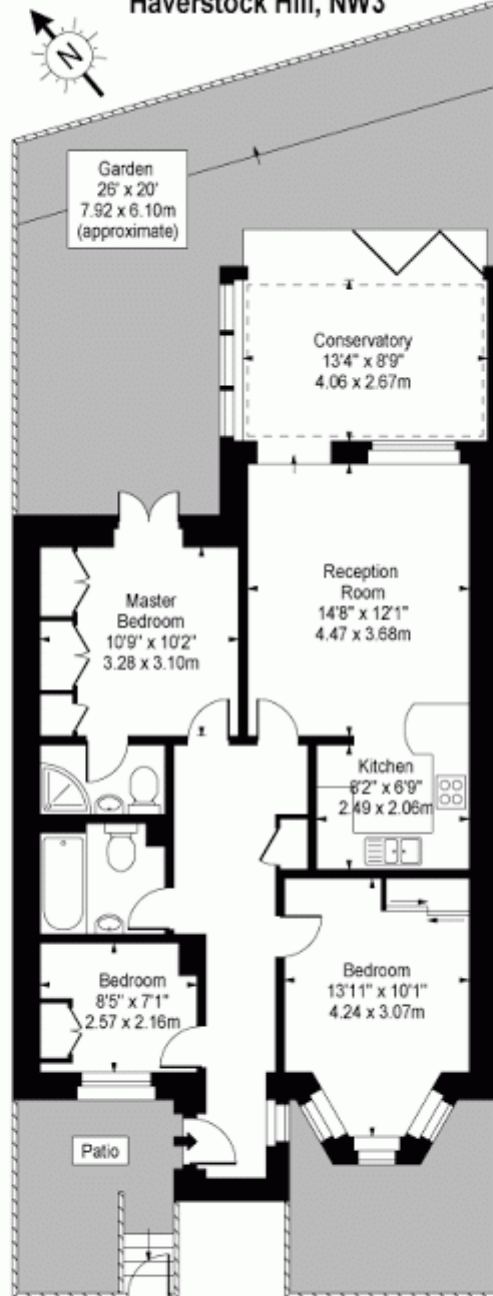


Chestertons Hampstead Lettings

55-56 Hampstead High Street
 Hampstead
 London
 NW3 1QH
 hampstead@chestertons.co.uk
 02077941125
 chestertons.co.uk

Additional tenant charges apply (fees apply to non-AST tenancies only)
 Tenancy Agreement Fee: £300
 References per Tenant/Guarantor: £60
 Inventory check (approx. £100 – £250 inc. VAT)
chestertons.co.uk/property-to-rent/applicable-fees

Haverstock Hill, NW3



Lower Ground Floor

Approx Gross Internal Area **900 Sq Ft - 83.61 Sq M**

For Illustration Purposes Only - Not To Scale

www.goldiens.co.uk

Prepared for Chestertons

Ref. No. 00945

