

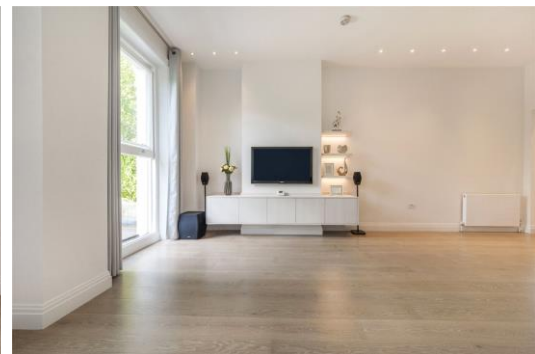


Belsize Park Gardens

Belsize Park, NW3

£2,750 per month
(£634.62 per week)

VIDEO TOUR AVAILABLE. A highly renovated 1st floor apartment in this grand period conversion boasting wood floors throughout, high ceilings, large sash windows and a balcony off the reception. The property is situated in a premier location in the heart of Belsize Park, walking distance to the shops and amenities. Accommodation comprises reception room with balcony off, fully fitted kitchen, double bedroom with fitted wardrobes, bathroom.



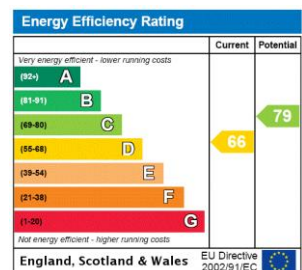
Belsize Park Gardens

Belsize Park, NW3

- A Highly Renovated 1st Floor Apartment in Grand Period Conversion
- 1 Bedroom, 1 Bathroom, Reception, Kitchen
- Wood Floors Throughout, High Ceilings, Large Sash Windows, Balcony
- Situated in Premier Location in the Heart of Belsize Park



Minimum Term: 18 months
Deposit Required: £3,173.08
Local Authority: London Borough Of Camden
Council Tax Band: E
EPC Rating: D
Furnished, Unfurnished

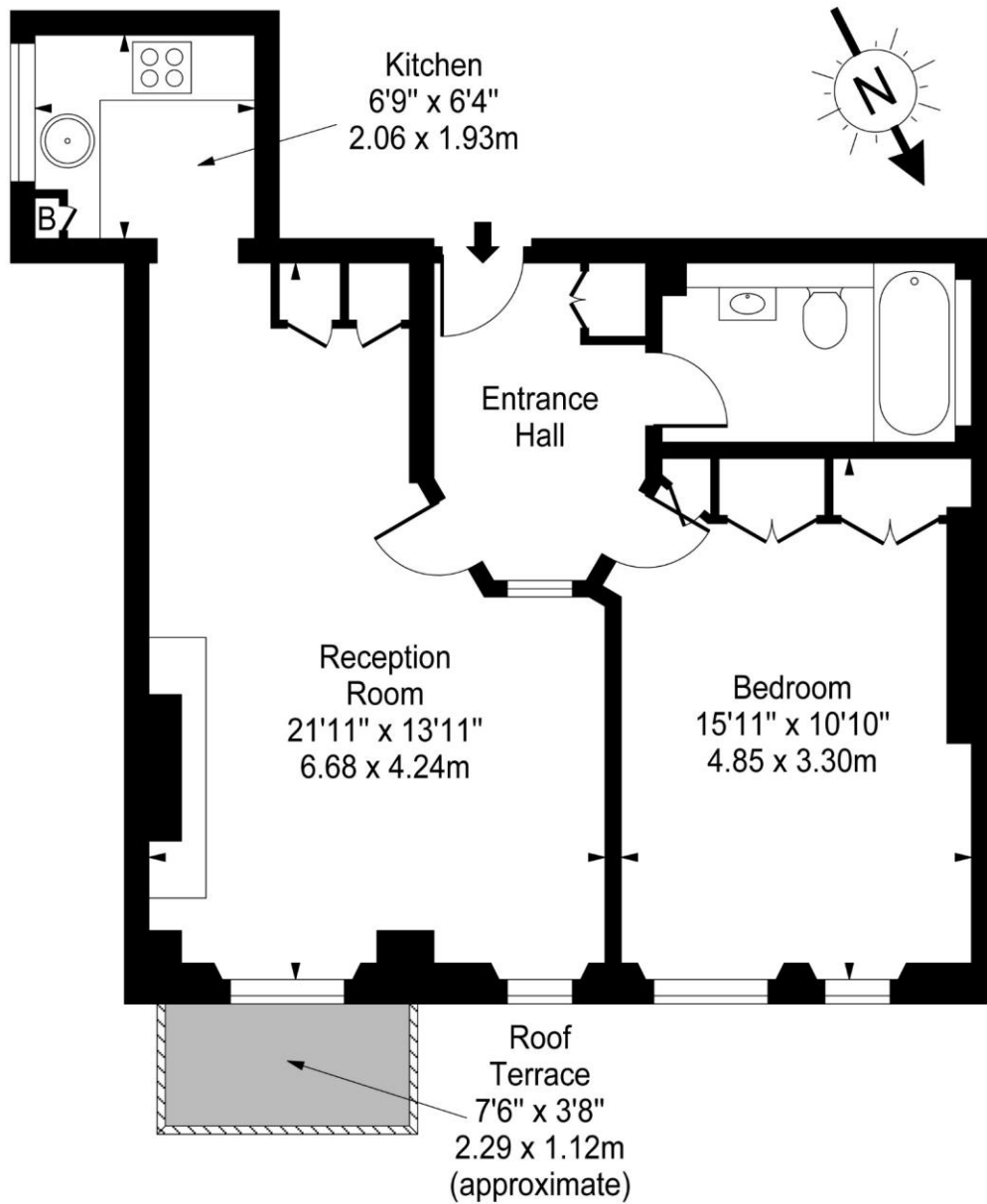


Chestertons Hampstead Lettings

55-56 Hampstead High Street
Hampstead
London
NW3 1QH
hampstead@chestertons.co.uk
02077941125
chestertons.co.uk

Additional tenant charges apply (fees apply to non-AST tenancies only)
Tenancy Agreement Fee: £300
References per Tenant/Guarantor: £60
Inventory check (approx. £100 – £250 inc. VAT)
chestertons.co.uk/property-to-rent/applicable-fees

Belsize Park Gardens, NW3



First Floor

Approx Gross Internal Area **595 Sq Ft - 55.28 Sq M**

For Illustration Purposes Only - Not To Scale

www.goldlens.co.uk

Prepared for Chestertons

Ref. No. 006274J

