



# Northways

College Crescent, NW3

£4,312 per month  
(£995.08 per week)

\*VIDEO TOUR AVAILABLE\*. A lovely bright and airy high specification 4 bedroom family apartment on the 2nd floor of this purpose built block benefiting from hard wood floors in the living room and entrance hall, video entry phone, plenty of storage, lift and porter. The property is situated moments from Swiss Cottage (Jubilee Line) and all the shopping amenities of Belsize Park (Northern Line). Accommodation comprises spacious reception room and dining area, fully fitted kitchen, master bedroom with fitted wardrobes and en-suite bathroom with jacuzzi, 3 double bedrooms, Rental includes heating and hot water.





# Northways

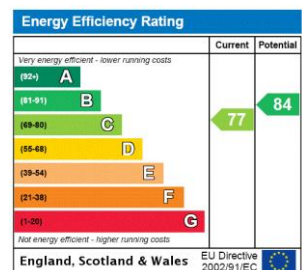
## College Crescent, NW3

- High Specification 2nd Floor Family Apartment in Purpose Built Block
- 4 Bedrooms, 2 Bathrooms, 2 Receptions, Kitchen
- Hard Wood Floors, Video Entry Phone, Plenty of Storage, Lift, Porter, Rent Includes Heating/Hot Water
- Situated Moments from Swiss Cottage (Jubilee Line), Within Close Proximity to Shop/Restaurants of Belsize Park (Northern Line)





**Minimum Term:** 18 months  
**Deposit Required:** £4,975.38  
**Local Authority:** London Borough Of Camden  
**Council Tax Band:** F  
**EPC Rating:** C  
**Unfurnished**

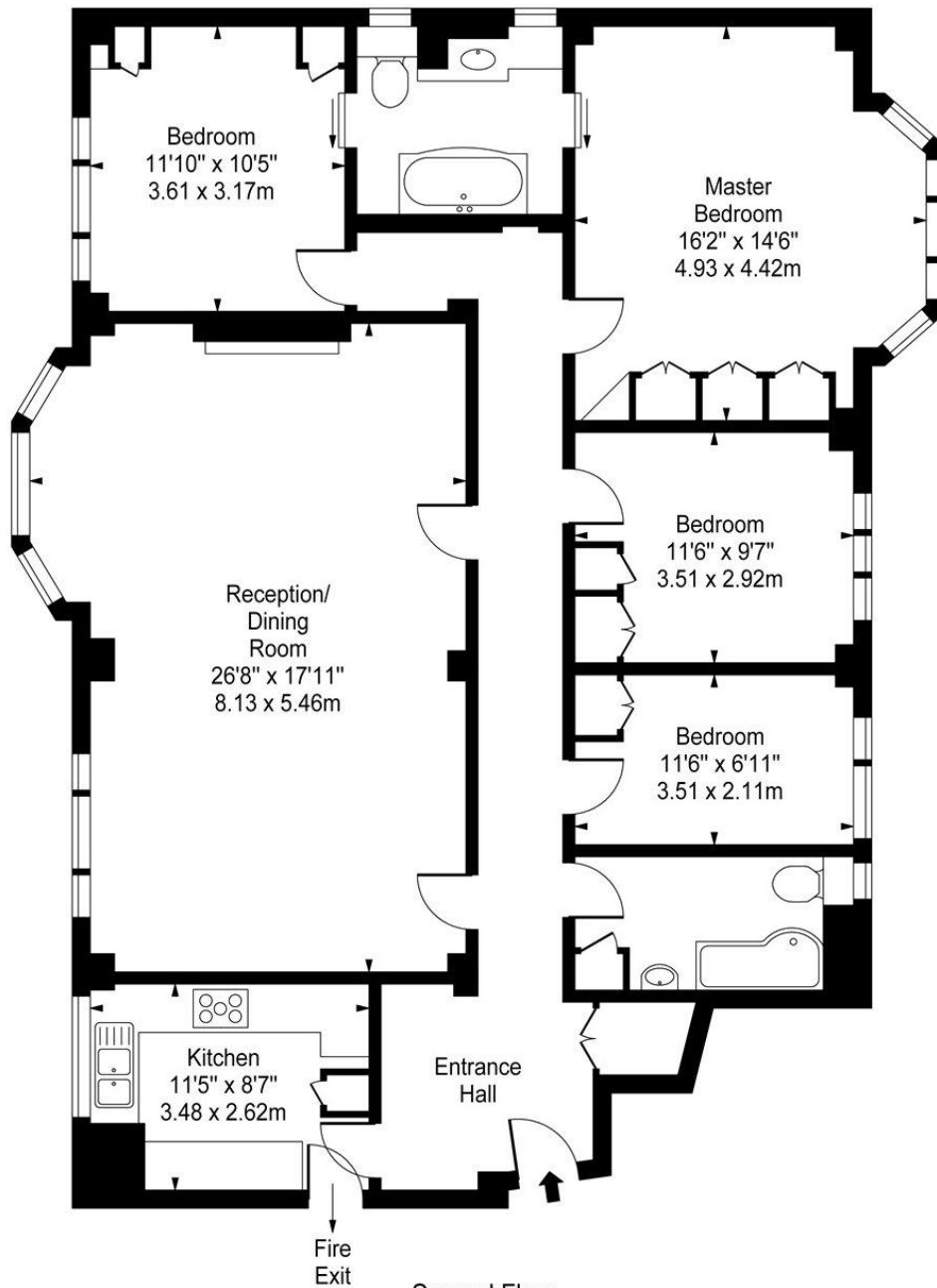
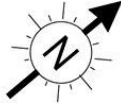


### Chestertons Hampstead Lettings

55-56 Hampstead High Street  
 Hampstead  
 London  
 NW3 1QH  
 hampstead@chestertons.co.uk  
 02077941125  
 chestertons.co.uk

Additional tenant charges apply (fees apply to non-AST tenancies only)  
 Tenancy Agreement Fee: £300  
 References per Tenant/Guarantor: £60  
 Inventory check (approx. £100 – £250 inc. VAT)  
[chestertons.co.uk/property-to-rent/applicable-fees](http://chestertons.co.uk/property-to-rent/applicable-fees)

**Northways,  
College Crescent, NW3**



**Approx Gross Internal Area 1475 Sq Ft - 137.03 Sq M**

For Illustration Purposes Only - Not To Scale

[www.goldlens.co.uk](http://www.goldlens.co.uk)

Prepared for Chestertons

Ref. No. 003792J

