



Netherhall Gardens

Hampstead, NW3

£2,700 per month
(£623.08 per week)

VIDEO TOUR AVAILABLE. A delightful 2 bedroom ground floor apartment benefiting from communal gardens in this period conversion in Hampstead. The property is walking distance to the shops and amenities of Hampstead Village (Northern Line). Accommodation comprises reception room, kitchen, 2 bedrooms, family bathroom. Sole Agent.



Netherhall Gardens

Hampstead, NW3

- A Delightful Ground Floor Apartment
- 2 Bedrooms, 1 Bathroom, Reception, Kitchen
- Communal Gardens
- Situated in Period Conversion in Hampstead



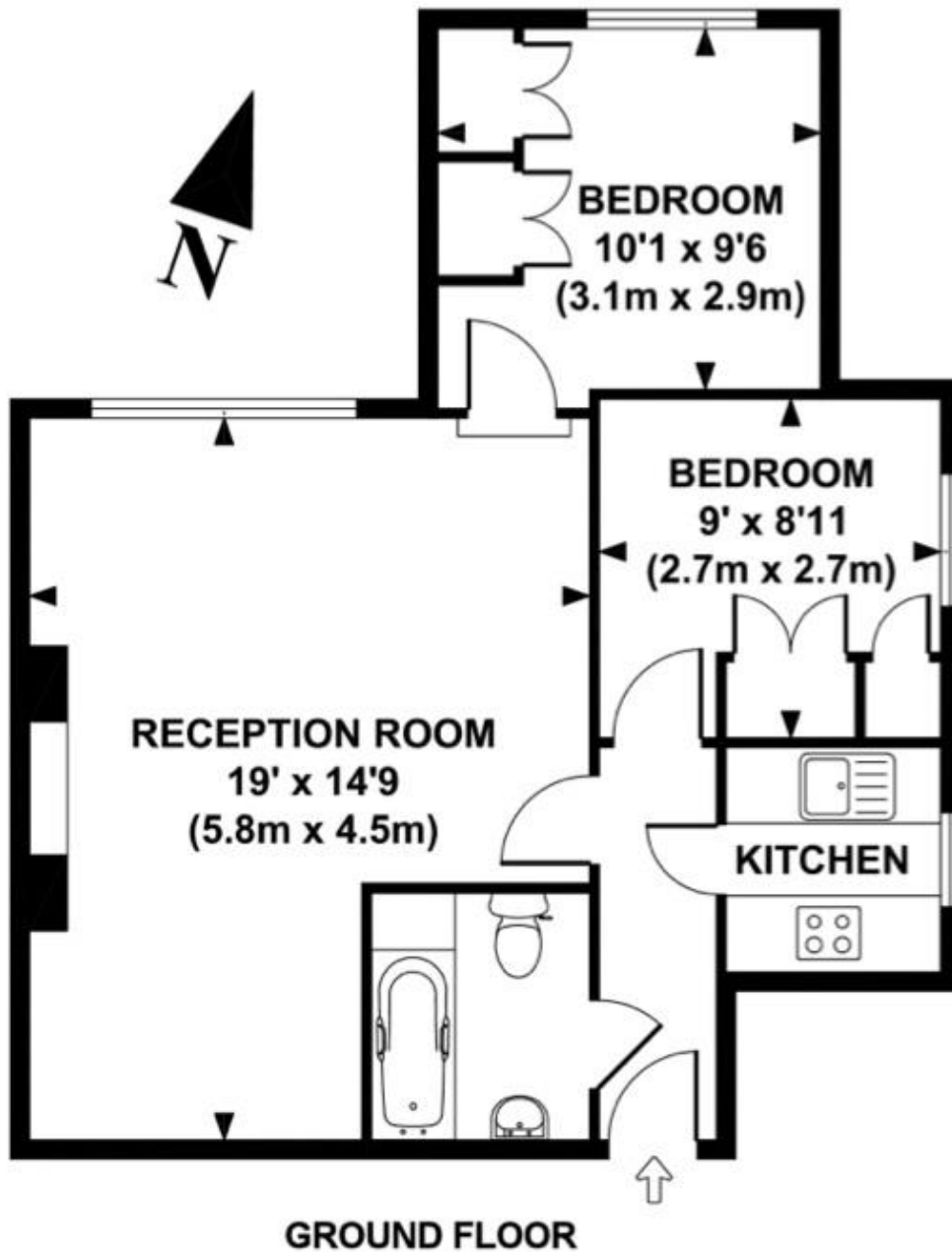
Minimum Term: 12 months
Deposit Required: £3,115.38
Local Authority: London Borough Of Camden
Council Tax Band: D
EPC Rating: C
Furnished, Unfurnished

Energy Efficiency Rating		Current	Potential
Very energy efficient - lower running costs			
(92-100)	A		
(81-91)	B		
(69-80)	C	69	77
(55-68)	D		
(39-54)	E		
(21-38)	F		
(1-20)	G		
Not energy efficient - higher running costs			
England, Scotland & Wales		EU Directive 2002/91/EC	

Chestertons Hampstead Lettings

55-56 Hampstead High Street
Hampstead
London
NW3 1QH
hampstead@chestertons.co.uk
02077941125
chestertons.co.uk

Additional tenant charges apply (fees apply to non-AST tenancies only)
Tenancy Agreement Fee: £300
References per Tenant/Guarantor: £60
Inventory check (approx. £100 – £250 inc. VAT)
[chestertons.co.uk/property-to-rent/applicable-fees](https://www.chestertons.co.uk/property-to-rent/applicable-fees)



GROUND FLOOR

APPROX. GROSS INTERNAL FLOOR AREA 531 SQ FT / 50 SQ M