



# Wendover Court

Finchley Road, NW2

£3,500 per month  
(£807.69 per week)

An impressive 3 bedroom spacious family apartment on the 2nd floor of this period building with period features and wood floors. The property is situated in this excellent location close to the amenities of Finchley Road (Jubilee Line) and close to open spaces of the Heath Extension. Accommodation comprises reception room, fully fitted kitchen, 3 double bedrooms, study/4th bedroom.

**CHESTERTONS**



# Wendover Court

Finchley Road, NW2

- An Impressive 2nd Floor Apartment in Period Building
- 3 Bedrooms, 1 Bathroom, Reception, Kitchen
- Wood Floors, Period Building
- Excellent Location Close to the Amenities of Finchley Road (Jubilee Line) and Close to Open Spaces of the Heath Extension.



**Minimum Term:** 18 months  
**Deposit Required:** £4,038.46  
**Local Authority:** London Borough of Barnet  
**Council Tax Band:** F  
**EPC Rating:** C  
**Furnished**

Energy Efficiency Rating		Current	Potential
Very energy efficient - lower running costs			
(92-100)	<b>A</b>		
(81-91)	<b>B</b>		
(69-80)	<b>C</b>	76	83
(55-68)	<b>D</b>		
(39-54)	<b>E</b>		
(21-38)	<b>F</b>		
(1-20)	<b>G</b>		
Not energy efficient - higher running costs			
England, Scotland & Wales		EU Directive 2002/91/EC	

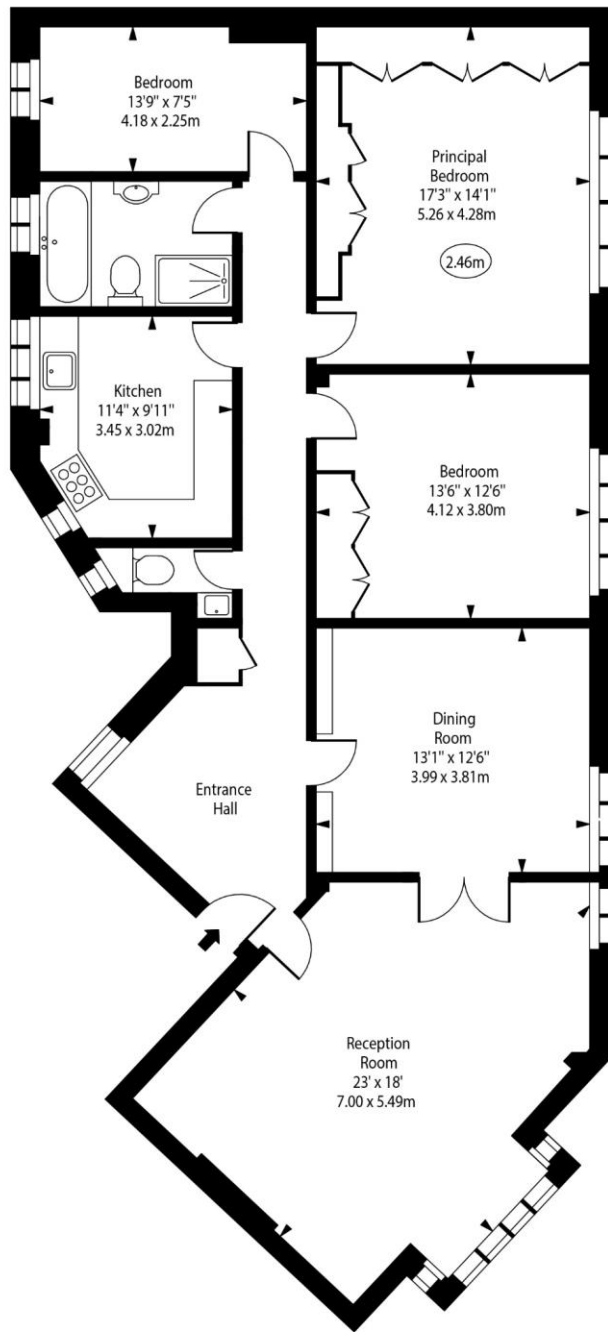
### *Chestertons Hampstead Lettings*

55-56 Hampstead High Street  
 Hampstead  
 London  
 NW3 1QH  
 hampstead@chestertons.co.uk  
 02077941125  
 chestertons.co.uk

Additional tenant charges apply (fees apply to non-AST tenancies only)  
 Tenancy Agreement Fee: £300  
 References per Tenant/Guarantor: £60  
 Inventory check (approx. £100 – £250 inc. VAT)  
[chestertons.co.uk/property-to-rent/applicable-fees](http://chestertons.co.uk/property-to-rent/applicable-fees)

Wendover Court,  
Finchley Road, NW2

○ - Ceiling Height



Second Floor

Approx Gross Internal Area 1465 Sq Ft - 136.10 Sq M

For Illustration Purposes Only - Not To Scale

[www.goldlens.co.uk](http://www.goldlens.co.uk)

Prepared for Chestertons

Ref. No. 023922MS

