



Fitzjohns Avenue

Hampstead, NW3

£3,000 per month
(£692.31 per week)

VIDEO TOUR AVAILABLE. A highly refurbished 2 double bedroom apartment benefiting from its own entrance, private terrace with direct access to magnificent communal gardens, wood and marble flooring. The property is situated in this beautiful period detached residence within walking distance to Hampstead Village and Belsize Park (Northern Lines) and within close proximity to Swiss Cottage (Jubilee Line). Accommodation comprises large reception room, fitted kitchen, master bedroom with fitted wardrobe and direct access to the terrace and communal gardens, further double bedroom with fitted wardrobes, walk in shower, guest cloakroom.



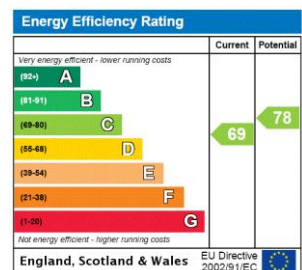
Fitzjohns Avenue

Hampstead, NW3

- Refurbished Ground Floor Apartment with Own Entrance
- 2 Bedrooms, 2 Bathrooms, Reception, Kitchen
- Private Terrace, Magnificent Communal Gardens, Wood/Marble Floors
- Walking Distance to Hampstead Village and Belsize Park (Northern Lines), Swiss Cottage (Jubilee Line)



Minimum Term: 18 months
Deposit Required: £3,461.54
Local Authority: London Borough Of Camden
Council Tax Band: F
EPC Rating: C
Unfurnished

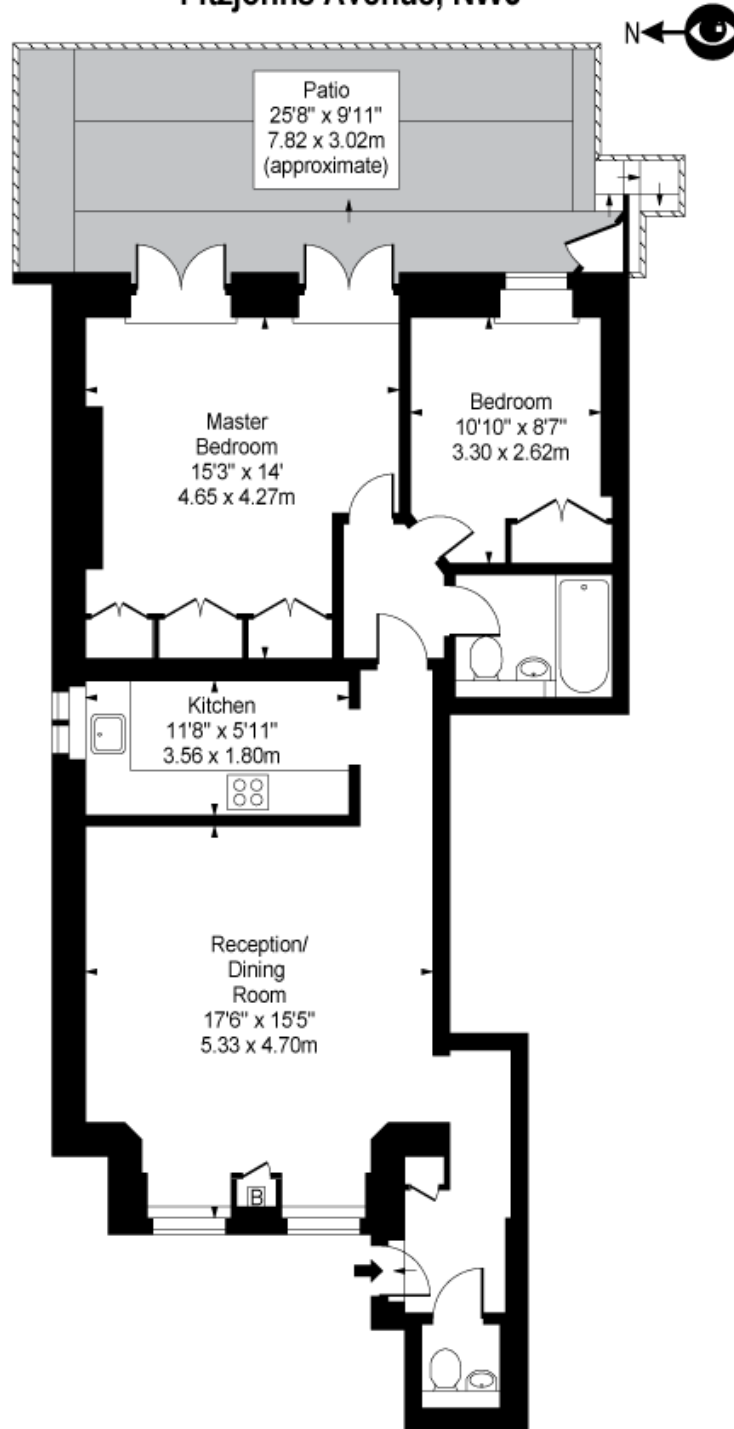


Chestertons Hampstead Lettings

55-56 Hampstead High Street
Hampstead
London
NW3 1QH
hampstead@chestertons.co.uk
02077941125
chestertons.co.uk

Additional tenant charges apply (fees apply to non-AST tenancies only)
Tenancy Agreement Fee: £300
References per Tenant/Guarantor: £60
Inventory check (approx. £100 – £250 inc. VAT)
chestertons.co.uk/property-to-rent/applicable-fees

Fitzjohns Avenue, NW3



Lower Ground Floor

Approx Gross Internal Area 820 Sq Ft - 76.18 Sq M

For Illustration Purposes Only - Not To Scale

Floor Plan by www.bpmmediagroup.com

Ref: No. P54878

