



# Belsize Square

Belsize Park, NW3

£6,456.67 per month  
(£1,490 per week)

\*VIDEO TOUR AVAILABLE\*. A fabulous 3 bedroom lower ground floor maisonette with its own entrance and south west facing garden and access to shared garden set in a semi detached period building. The property is situated in this quiet location moments' away from Belsize Village and walking distance to shops and amenities of Belsize Park (Northern Line). The property also boasts a York stone terrace, wood floors throughout and exceptionally high ceilings. Accommodation comprises reception room with direct access to the terrace and garden, open plan fully fitted eat in kitchen with Miele appliances, master bedroom with fitted wardrobes and en-suite marble bathroom, further double bedroom with fitted wardrobes, double bedroom, shower room, storage room, airing cupboard, loft space, bicycle shed. Rent includes garden maintenance.. Rent includes garden maintenance.





# Belsize Square

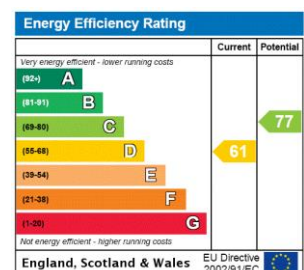
Belsize Park, NW3

- A Fabulous Lower Ground Floor Maisonette With Own Entrance
- 3 Bedrooms, 2 Bathrooms, Reception, Open Plan Eat In Kitchen
- South West Facing Garden, Shared Garden at Rear, Wood Floors, High Ceilings, Rent Includes Garden Maintenance, Loft Space, Bicycle Shed
- Quiet Location Moments' Away from Belsize Village, Walking Distance to Belsize Park (Northern Line)





**Minimum Term:** 18 months  
**Deposit Required:** £8,940.00  
**Local Authority:** London Borough Of Camden  
**Council Tax Band:** G  
**EPC Rating:** D  
**Unfurnished**

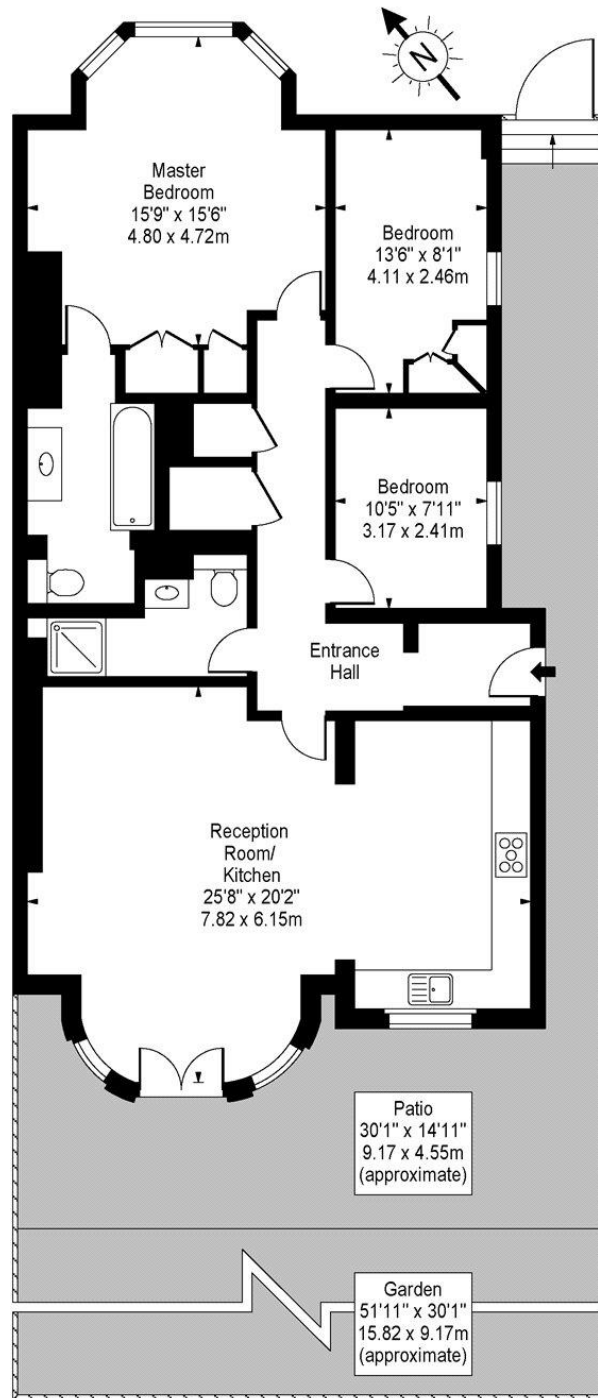


### Chestertons Hampstead Lettings

55-56 Hampstead High Street  
 Hampstead  
 London  
 NW3 1QH  
[hampstead@chestertons.co.uk](mailto:hampstead@chestertons.co.uk)  
 02077941125  
[chestertons.co.uk](http://chestertons.co.uk)

Additional tenant charges apply (fees apply to non-AST tenancies only)  
 Tenancy Agreement Fee: £300  
 References per Tenant/Guarantor: £60  
 Inventory check (approx. £100 – £250 inc. VAT)  
[chestertons.co.uk/property-to-rent/applicable-fees](http://chestertons.co.uk/property-to-rent/applicable-fees)

## Belsize Square, NW3



Lower Ground Floor

Approx Gross Internal Area **1170 Sq Ft - 108.69 Sq M**

For Illustration Purposes Only - Not To Scale

[www.goldlens.co.uk](http://www.goldlens.co.uk)

Prepared for Chestertons

Ref. No. 004122A

