

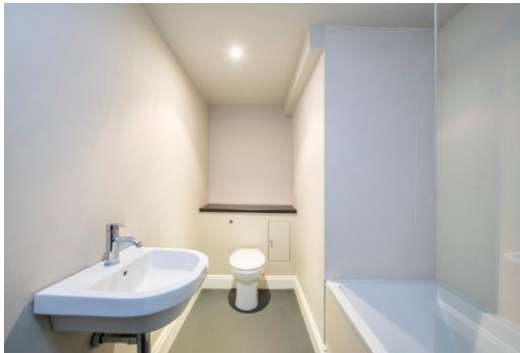


# Rosslyn Hill

## Hampstead, NW3

£2,250 per month  
(£519.23 per week)

\*VIDEO TOUR AVAILABLE\*. A charming newly decorated lower ground floor apartment with its own entrance in this beautiful Victorian building close proximity to Hampstead Village and Belsize Park (Northern Lines). The property benefits from wood floors throughout and plenty of storage. Accommodation comprises reception room with triple windows, fully fitted kitchen, double bedroom, bathroom. Sole Agent.



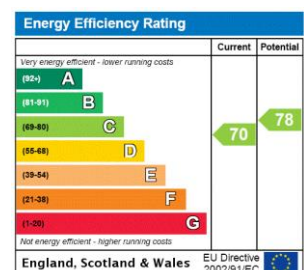
# Rosslyn Hill

## Hampstead, NW3

- A Charming Lower Ground Floor Apartment in Victorian Building
- 1 Bedroom, 1 Bathroom, Reception, Kitchen
- Own Entrance, Wood Floors Throughout, Storage
- Close Proximity to Hampstead and Belsize Park (Northern Lines)



**Minimum Term:** 18 months  
**Deposit Required:** £2,596.15  
**Local Authority:** London Borough Of Camden  
**Council Tax Band:** D  
**EPC Rating:** C  
**Unfurnished**



### *Chestertons Hampstead Lettings*

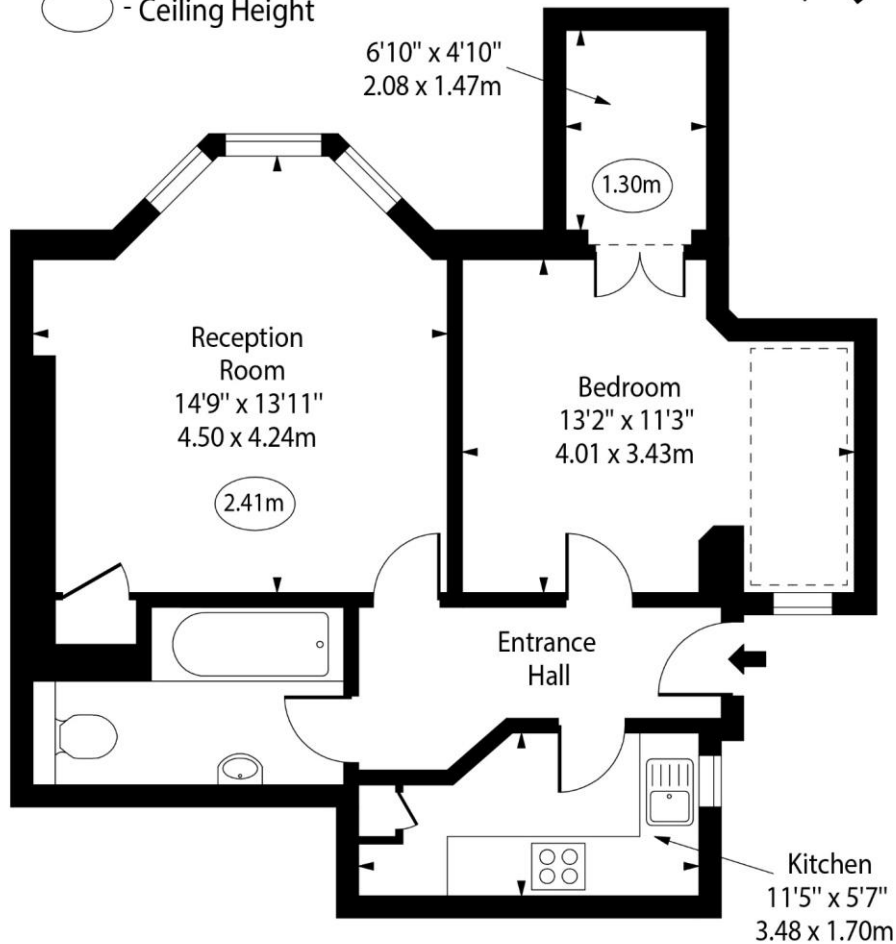
55-56 Hampstead High Street  
Hampstead  
London  
NW3 1QH  
hampstead@chestertons.co.uk  
02077941125  
chestertons.co.uk

Additional tenant charges apply (fees apply to non-AST tenancies only)  
Tenancy Agreement Fee: £300  
References per Tenant/Guarantor: £60  
Inventory check (approx. £100 – £250 inc. VAT)  
chestertons.co.uk/property-to-rent/applicable-fees

# Rosslyn Hill, Hampstead, NW3



○ - Ceiling Height



Approx Gross Internal Area 518 Sq Ft - 48.12 Sq M

Approx. Floor Area Including Restricted Heights 554 Sq Ft - 51.47 Sq M

For Illustration Purposes Only - Not To Scale

[www.goldlens.co.uk](http://www.goldlens.co.uk)

Prepared for Chestertons

Ref. No. 022785E

