



# Holly Lodge Mansions

Oakeshott Avenue, N6

£300 per week  
(£1,300 pcm)

A delightful ground floor studio apartment in this Edwardian building benefiting from wood floors and the use of communal gardens. The property is situated in a beautiful location in Highgate within walking distance to the shops and amenities of Swains Lane. Accommodation comprises reception room/bedroom, kitchen, bathroom.



# Holly Lodge Mansions

Oakeshott Avenue, N6

- A Delightful Ground Floor Studio Apartment in Edwardian Building
- Bedroom/Reception, 1 Bathroom, Kitchen
- Use of Communal Gardens, Wood Floors
- Situated in a Beautiful Location in Highgate, Walking Distance to Shops/Amenities of Swains Lane



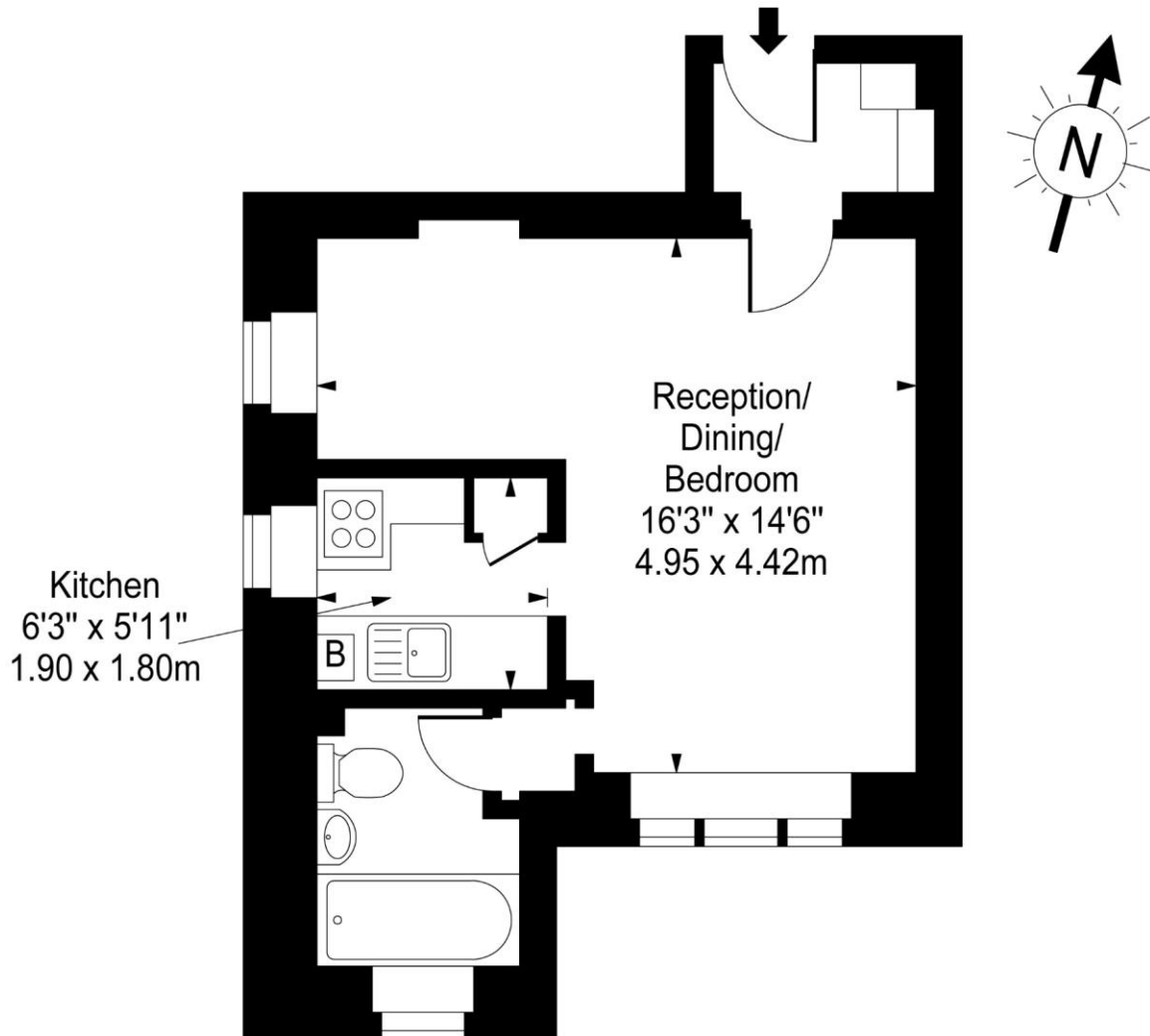
**Tenure:** To be advised  
**Furnished**

| Energy Efficiency Rating                    |         |                         |
|---|---------|-------------------------|
|   | Current | Potential               |
| Very energy efficient - lower running costs |         |                         |
| A (94-100)                                  |         |                         |
| B (81-93)                                   |         |                         |
| C (69-80)                                   | 78      | 79                      |
| D (55-68)                                   |         |                         |
| E (39-54)                                   |         |                         |
| F (21-38)                                   |         |                         |
| G (1-20)                                    |         |                         |
| Not energy efficient - higher running costs |         |                         |
| England, Scotland & Wales                   |         | EU Directive 2002/91/EC |

### *Chestertons Hampstead Lettings*

55-56 Hampstead High Street  
Hampstead  
London  
NW3 1QH  
lettings.hampstead@chestertons.com  
02077941125  
chestertons.com

# Holly Lodge Mansions, Oakeshott Avenue, N6



Ground Floor

**Approx Gross Internal Area 295 Sq Ft - 27.41 Sq M**

For Illustration Purposes Only - Not To Scale

[www.goldlens.co.uk](http://www.goldlens.co.uk)

Prepared for Chestertons

Ref. No. 009657J

