



Belsize Park

London, NW3

£3,600 per month
(£830.77 per week)

VIDEO TOUR AVAILABLE. Short Let. A delightful apartment with its own front door and patio which has been recently decorated situated in this smart period building walking distance to the shops and restaurants of Belsize Park(Northern Line). Accommodation comprises reception room with French doors leading to the small patio, open plan fully fitted kitchen with breakfast bar, double bedroom, ultra modern shower room housing a washer dryer.



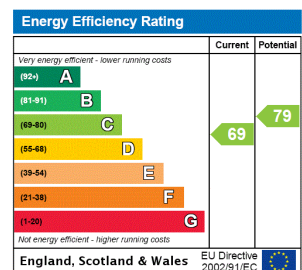
Belsize Park

London, NW3

- Short Let. A Delightful Apartment with Own Front Door in Smart Period Building
- 1 Bedroom, 1 Bathroom, Reception, Open Plan Kitchen
- Small Patio,
- Walking Distance to the Shops/Restaurants of Belsize Park(Northern Line)



Minimum Term: 1 months
Deposit Required: £3,600.00
Local Authority: London Borough Of Camden
Council Tax Band: E
EPC Rating: C
Furnished



Chestertons Hampstead Lettings

55-56 Hampstead High Street
 Hampstead
 London
 NW3 1QH
 hampstead@chestertons.co.uk
 02077941125
 chestertons.co.uk

Additional tenant charges apply (fees apply to non-AST tenancies only)
 Tenancy Agreement Fee: £300
 References per Tenant/Guarantor: £60
 Inventory check (approx. £100 – £250 inc. VAT)
chestertons.co.uk/property-to-rent/applicable-fees

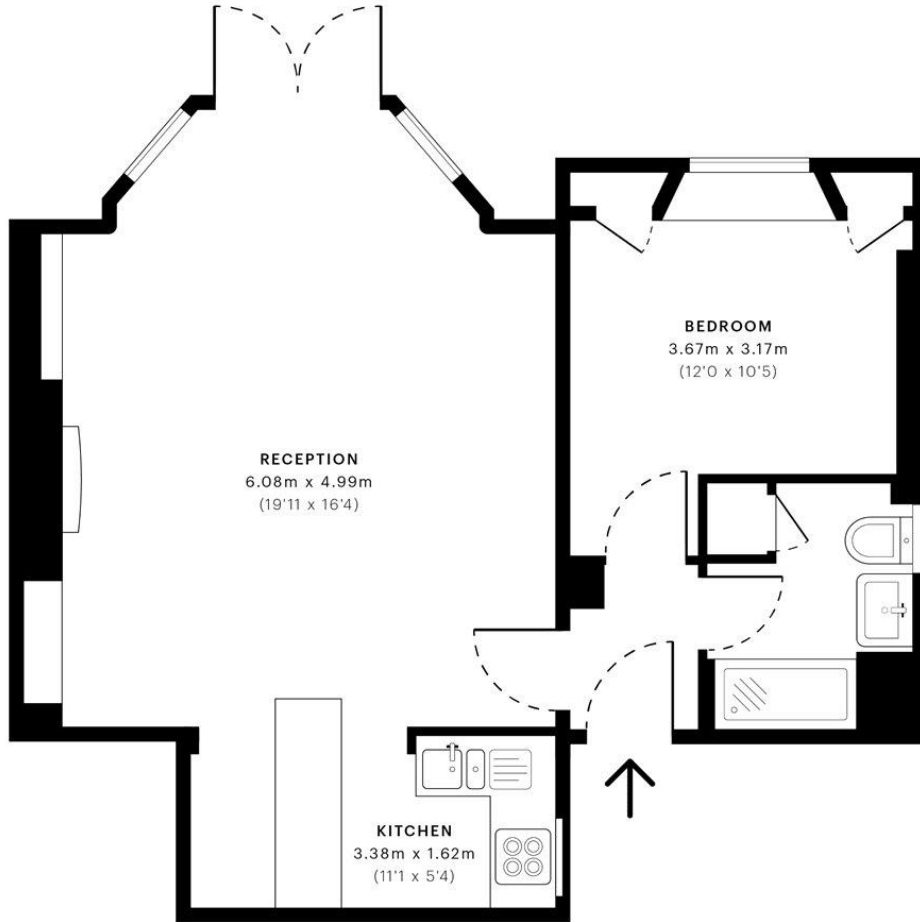


Belsize Park, NW3

CAPTURE DATE 12/12/2022 LASER SCAN POINTS 24,624,696

GROSS INTERNAL AREA

51.08 sqm / 549.82 sqft



— Ground Floor

GROSS INTERNAL AREA (GIA)
The footprint of the property.
51.08 sqm / 549.82 sqft

NET INTERNAL AREA (NIA)
Excludes walls and external features.
Includes washrooms, recessed head height.
46.44 sqm / 499.88 sqft

EXTERNAL STRUCTURAL FEATURES
Balconies, terraces, verandas etc.
0.00 sqm / 0.00 sqft

RESTRICTED HEAD HEIGHT
Limited use area under 1.5m.
0.00 sqm / 0.00 sqft



Spec Verified floor plans are produced in accordance with Royal Institution of Chartered Surveyors' Property Measurement Standards. Plots and gardens are illustrative only and excluded from all area calculations. Due to rounding, numbers may not add up precisely. All measurements shown for the individual room lengths and widths are the maximum points of measurements captured in the scan.

IPMS 2018 RESIDENTIAL 50.43 sqm / 543.04 sqft
IPMS 3 RESIDENTIAL 46.86 sqm / 503.37 sqft

SPEC ID 56391fea85516f50df5afafa6

