



Steeles Road

Belsize Park, NW3

£12,500 per month
(£2,884.62 per week)

A luxurious 5 bedroom period family house arranged over 5 floors which has been refurbished to the highest of standards close proximity to Belsize Park and a short walk to Hampstead Village. The property comprises approximately 3,100 sq ft and benefits from a conservatory and small garden. Accommodation comprises double reception room, open plan fully fitted kitchen, master bedroom with en-suite bathroom and separate shower, 2 double bedrooms with en-suite bathrooms, 2 further bedrooms, family bathroom.



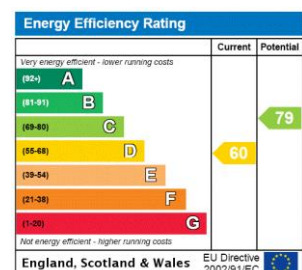
Steeles Road

Belsize Park, NW3

- Magnificent Semi Detached Period House Over 5 Floors
- 5 Bedrooms, 4 Bathrooms, 4 Receptions, Kitchen
- Conservatory, Private Garden, Off Street Parking
- Walking Distance to Belsize Park, Short Walk to Hampstead Village (Northern Lines)



Minimum Term: 18 months
Deposit Required: £17,307.69
Local Authority: London Borough Of Camden
Council Tax Band: H
EPC Rating: D
Furnished, Unfurnished

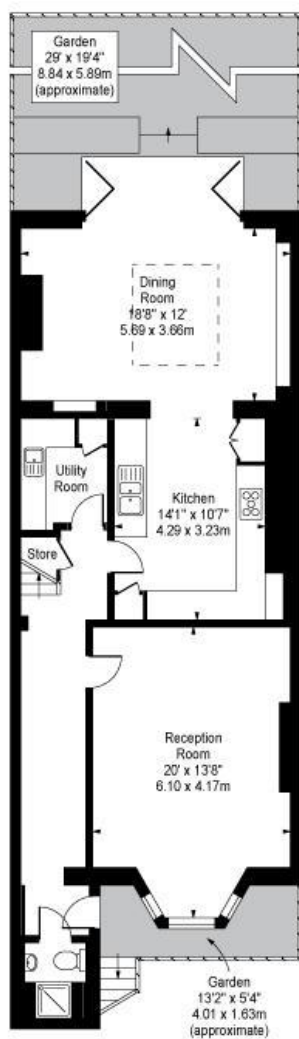


Chestertons Hampstead Lettings

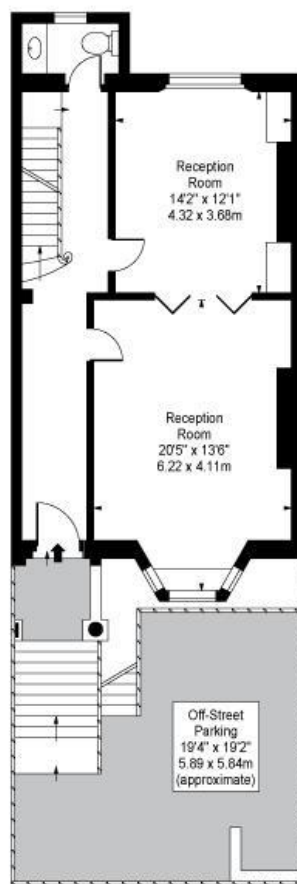
55-56 Hampstead High Street
Hampstead
London
NW3 1QH
hampstead@chestertons.co.uk
02077941125
chestertons.co.uk

Additional tenant charges apply (fees apply to non-AST tenancies only)
Tenancy Agreement Fee: £300
References per Tenant/Guarantor: £60
Inventory check (approx. £100 – £250 inc. VAT)
chestertons.co.uk/property-to-rent/applicable-fees

Steeles Road,
Belsize Park, NW3 4SH



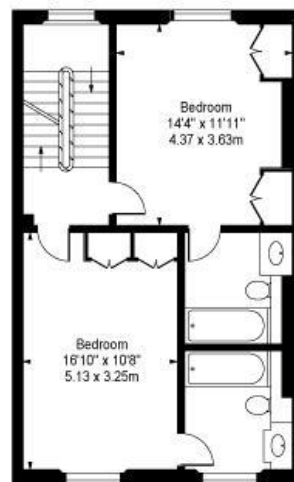
Lower Ground Floor



Raised Ground Floor



Third Floor



Second Floor



First Floor

Approx Gross Internal Area **3172 Sq Ft - 294.68 Sq M**

For Illustration Purposes Only - Not To Scale
Floor Plan by www.bpmmediagroup.com
Ref: No. P41172

