



Goldhurst Terrace

South Hampstead, NW6

£6,500 per month
(£1,500 per week)

Short Let. A stunning 2 double bedroom, 2 bathroom loft style mews house located in South Hampstead. This unique home benefits from high ceilings, wood floors throughout and smart fixtures and fittings. The property is situated in Indigo Mews off Goldhurst Terrace, walking distance to the shops and amenities of Finchley Road (Jubilee Line). Accommodation comprises ground: reception room, open plan fully fitted kitchen, bathroom 1st floor: master bedroom with en-suite shower room, single bedroom, study.



Goldhurst Terrace

South Hampstead, NW6

- Unique Loft Style Mews House
- 2 Bedrooms, 2 Bathrooms, Reception, Open Plan Kitchen
- Situated in Premier Road in South Hampstead Close to the Vast Selection of Shops of Finchley Road and Including Waitrose and Marks & Spencer



Minimum Term: 1 months
Deposit Required: £6,000.00
Local Authority: London Borough Of Camden
Council Tax Band: F
EPC Rating: B
Unfurnished

Energy Efficiency Rating		Current	Potential
Very energy efficient - lower running costs			
(92-100)	A		
(81-91)	B	82	82
(69-80)	C		
(55-68)	D		
(39-54)	E		
(21-38)	F		
(1-20)	G		
Not energy efficient - higher running costs			
England, Scotland & Wales		EU Directive 2002/91/EC	

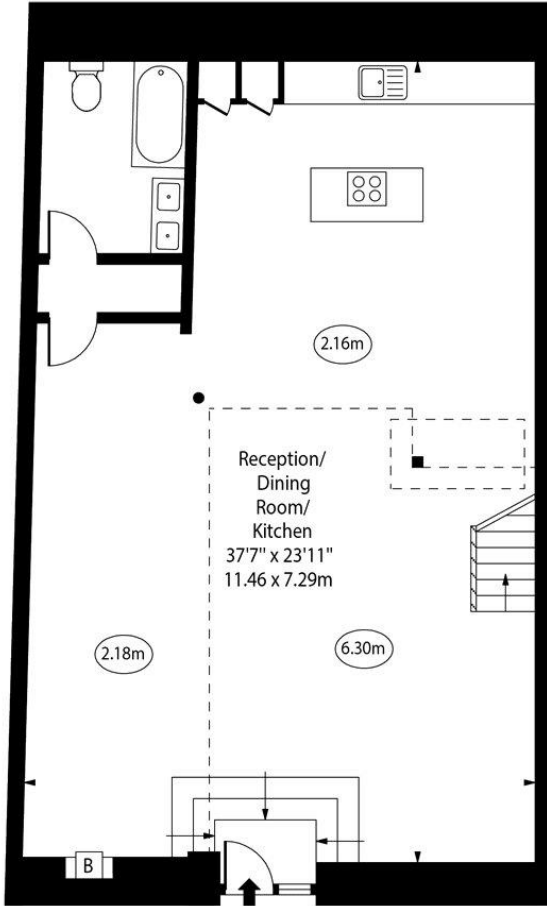
Chestertons Hampstead Lettings

55-56 Hampstead High Street
 Hampstead
 London
 NW3 1QH
 hampstead@chestertons.co.uk
 02077941125
 chestertons.co.uk

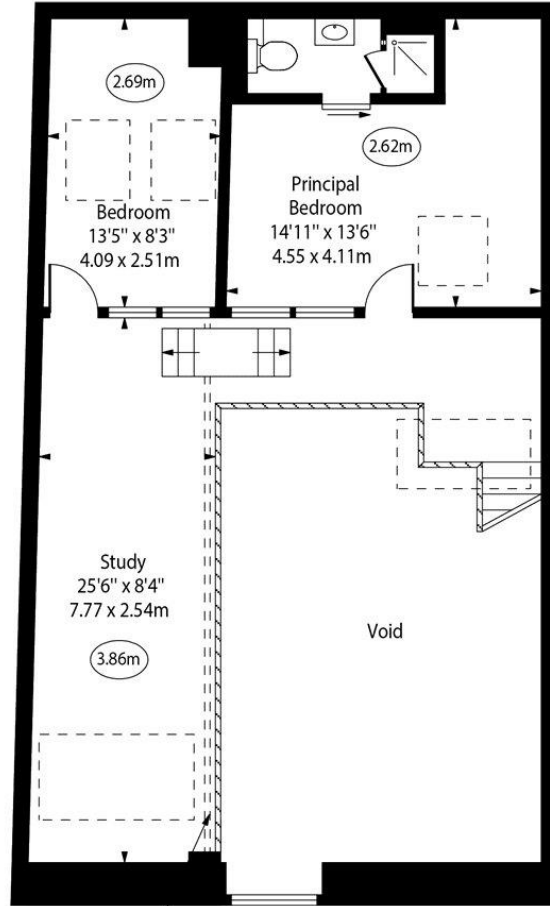
Additional tenant charges apply (fees apply to non-AST tenancies only)
 Tenancy Agreement Fee: £300
 References per Tenant/Guarantor: £60
 Inventory check (approx. £100 – £250 inc. VAT)
[chestertons.co.uk/property-to-rent/applicable-fees](https://www.chestertons.co.uk/property-to-rent/applicable-fees)

Indigo Mews, NW6

○ - Ceiling Height



Ground Floor



First Floor/
Mezzanine

Approx Gross Internal Area 1500 Sq Ft - 139.35 Sq M
 Approx. Floor Area Including Restricted Heights 1508 Sq Ft - 140.09 Sq M
 (Excluding Void)

For Illustration Purposes Only - Not To Scale
www.goldlens.co.uk
 Prepared for Chestertons
 Ref. No. 020010M

