



# Agincourt Road

## South End Green, NW3

£8,666.67 per month  
(£2,000.00 per week)

\*VIDEO TOUR AVAILABLE\*. Short Let. A truly unique and charming 4 bedroom house over 2 floors situated within close proximity to the shopping amenities of South End Green (Hampstead Heath Overground). The property has the benefit of wood floors throughout, private garden and roof terrace on the 1st floor. Accommodation comprises large double reception room with open plan fully fitted kitchen, master bedroom, 3 double bedrooms, 2 bathrooms, study.



# Agincourt Road

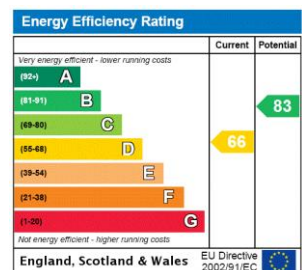
## South End Green, NW3

- Short Let. Charming House Over 2 Floors Only
- 4 Bedrooms, 2 Bathrooms, Reception, Kitchen
- Wood Floors, Garden, Roof Terrace
- Situated in Excellent Location in South End Green





**Minimum Term:** 1 months  
**Deposit Required:** £8,000.00  
**Local Authority:** London Borough Of Camden  
**Council Tax Band:** F  
**EPC Rating:** D  
**Furnished**



### *Chestertons Hampstead Lettings*

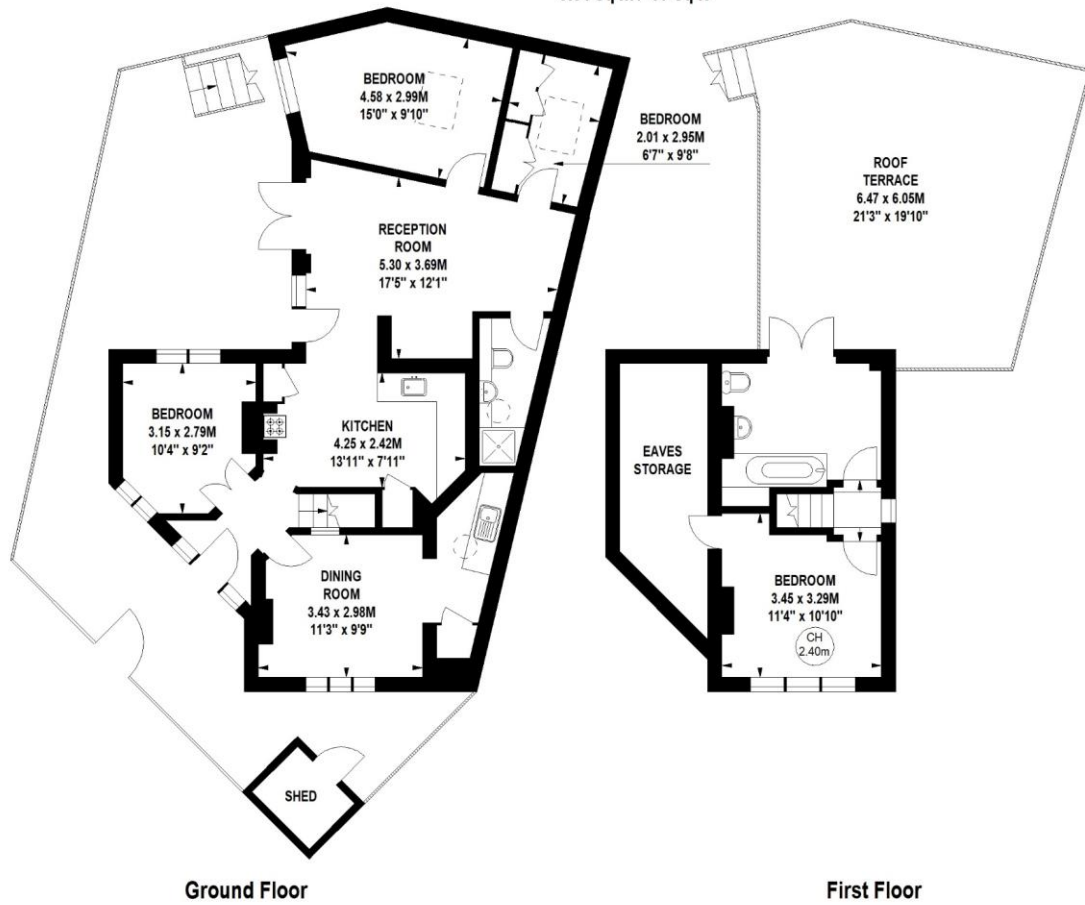
55-56 Hampstead High Street  
Hampstead  
London  
NW3 1QH  
lettings.hampstead@chestertons.co.uk  
02077941125  
chestertons.co.uk

Additional tenant charges apply (fees apply to non-AST tenancies only)  
Tenancy Agreement Fee: £300  
References per Tenant/Guarantor: £60  
Inventory check (approx. £100 – £250 inc. VAT)  
chestertons.co.uk/property-to-rent/applicable-fees

**Wesley Cottage,  
Agincourt Road,  
South End Green, NW3**

Approximate gross internal area  
116.78 sq m / 1257 sq ft  
(Including Eaves Storage)  
Eaves Storage  
9.01 sq m / 97 sq ft

Key :  
CH - Ceiling Height



Not to scale, for guidance only and must not be relied upon as a statement of fact.  
All measurements and areas are approximate only

