



# Highview

5 Holford Road, NW3

£7,800 per month  
(£1,800 per week)

\*VIDEO TOUR AVAILABLE\*. Short Let. A highly refurbished 2 bedroom lateral and exceptionally spacious 2nd floor apartment in this modern purpose built building with lift situated in a quiet location on Hampstead Heath and within close proximity to the shops and restaurants of Hampstead Village. The property has the benefit of under floor heating, wood floors, wine cooler and video entry phone. Accommodation comprises spacious reception room and dining area, open plan fully fitted kitchen with breakfast bar, master bedroom with fitted wardrobes and en-suite bathroom, double bedroom with fitted wardrobes, family bathroom, study. Communal heating and hot water included in rental.



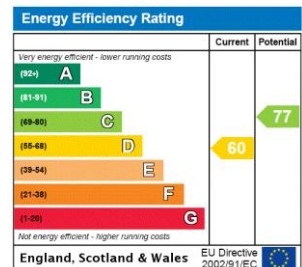
# Highview

5 Holford Road, NW3

- Short Let. Highly Refurbished 2nd Floor Apartment in Modern Purpose Built Block With Lift
- 2 Bedrooms, 2 Bathrooms, Reception, Open Plan Fully Fitted Kitchen, Study
- Wood Floors, Communal Heating/Hot Water
- Quiet Location on Hampstead Heath, Walking Distance to Hampstead Village



**Minimum Term:** 1 months  
**Deposit Required:** £7,200.00  
**Local Authority:** London Borough Of Camden  
**Council Tax Band:** G  
**EPC Rating:** D  
**Furnished**

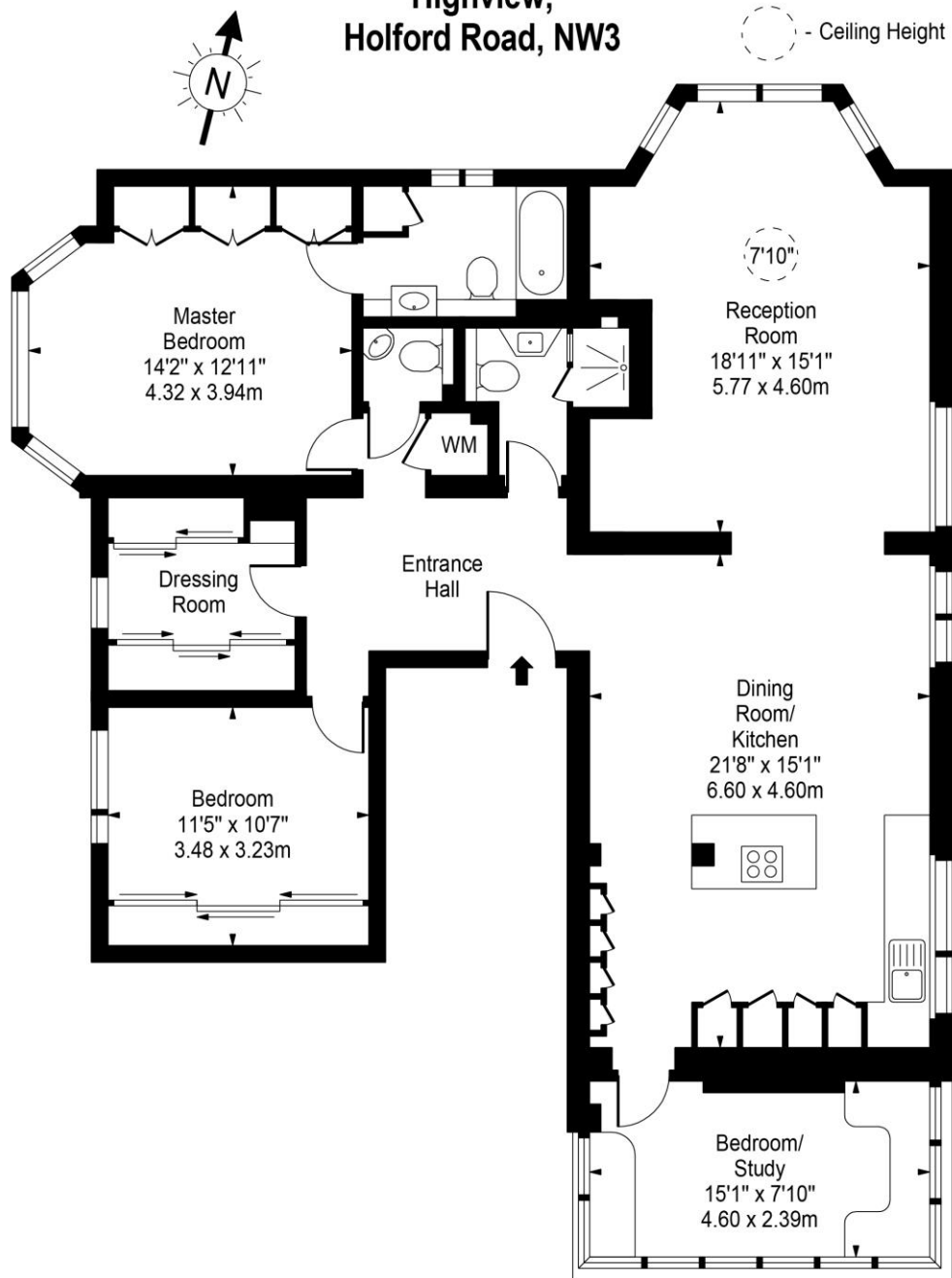


### *Chestertons Hampstead Lettings*

55-56 Hampstead High Street  
Hampstead  
London  
NW3 1QH  
hampstead@chestertons.co.uk  
02077941125  
chestertons.co.uk

Additional tenant charges apply (fees apply to non-AST tenancies only)  
Tenancy Agreement Fee: £300  
References per Tenant/Guarantor: £60  
Inventory check (approx. £100 – £250 inc. VAT)  
[chestertons.co.uk/property-to-rent/applicable-fees](http://chestertons.co.uk/property-to-rent/applicable-fees)

**Highview,  
Holford Road, NW3**



Second Floor

**Approx Gross Internal Area 1357 Sq Ft - 126.06 Sq M**

For Illustration Purposes Only - Not To Scale

[www.goldlens.co.uk](http://www.goldlens.co.uk)

Prepared for Chestertons

Ref. No. 011364M

