



New Court

Lutton Terrace, NW3

£18,200 per month
(£4,200 per week)

VIDEO TOUR AVAILABLE. Short Let. A truly unique and eclectic 5 bedroom duplex apartment on the ground and lower ground floors of this purpose built block situated in this sought after location close to all the amenities of Hampstead Village. The property benefits from double volume ceilings, original stone floors, wood flooring, private garden and large patio, communal gardens. Accommodation comprises double reception room, TV room, his and hers studies, large utility room, fully fitted eat in kitchen leading to the private garden and patio, master bedroom with fully fitted wardrobes, double bedroom with French doors leading to the terrace, 3 further bedrooms, 2 family bathrooms.



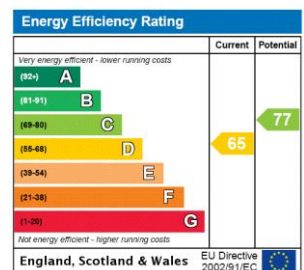
New Court

Lutton Terrace, NW3

- Short Let. Unique Eclectic Duplex Apartment in Purpose Built Block
- 5 Bedrooms, 2 Bathrooms, Double Reception Room, Fully Fitted Eat In Kitchen,
- Original Stone Floors, Wood Floors, Private Patio, Communal Gardens
- Situated in Premier Location, Within Close Proximity to Hampstead Village



Minimum Term: 1 months
Deposit Required: £16,800.00
Local Authority: London Borough of Camden
Council Tax Band: E
EPC Rating: D
Furnished

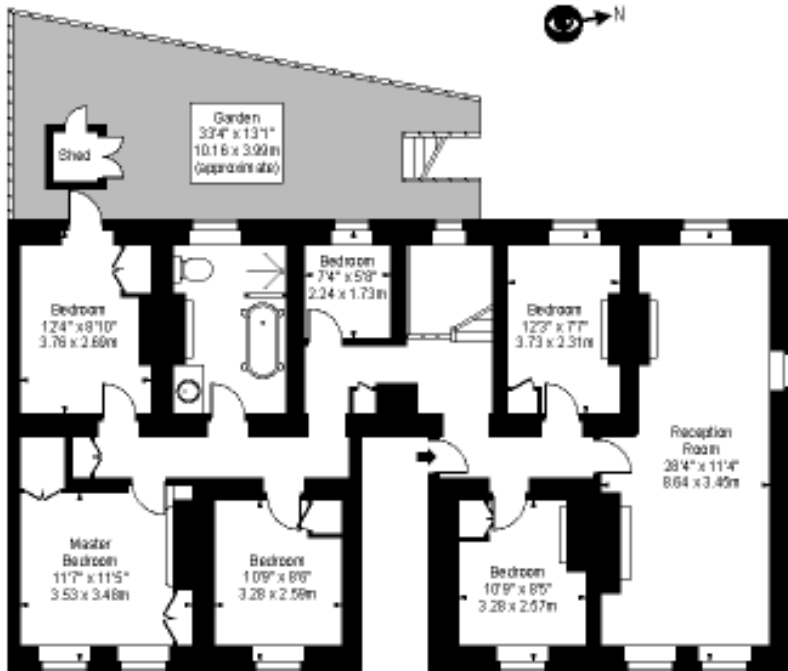


Chestertons Hampstead Lettings

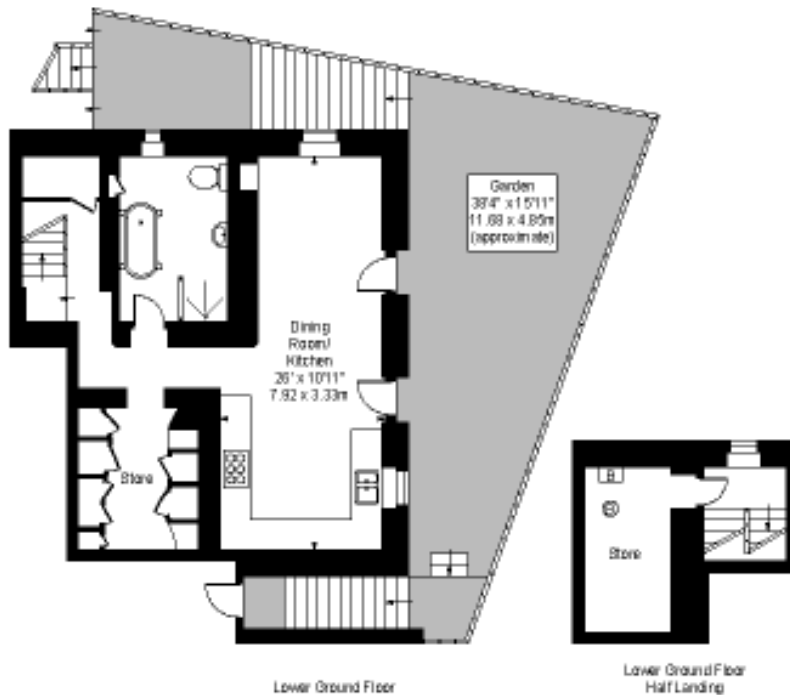
55-56 Hampstead High Street
 Hampstead
 London
 NW3 1QH
 lettings.hampstead@chestertons.co.uk
 02077941125
 chestertons.co.uk

Additional tenant charges apply (fees apply to non-AST tenancies only)
 Tenancy Agreement Fee: £300
 References per Tenant/Guarantor: £60
 Inventory check (approx. £100 – £250 inc. VAT)
chestertons.co.uk/property-to-rent/applicable-fees

Lutton Terrace,
Hampstead, NW3



Ground Floor



Lower Ground Floor

Lower Ground Floor
Half Landing

Approx Gross Internal Area **1948 Sq Ft - 180.97 Sq M**
(Excluding Shed)

For Illustration Purposes Only - Not To Scale
Floor Plan by www.dpmmedia.com
Ref No. P03211

