



Thorney Hedge Road

Chiswick, W4

£2,100 per month
(£484.62 per week)

Well-presented ground floor two bedroom garden flat ideally located within minutes of Chiswick Business Park and perfect for access to Gunnersbury Station. Also great for access to major road links A4/M4.



Thorney Hedge Road

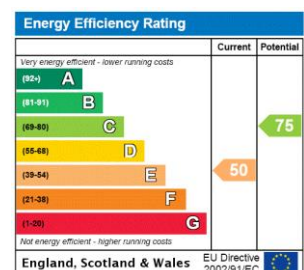
Chiswick, W4

- Well-presented ground floor two bedroom garden flat
- Minutes from Chiswick Business Park
- Two double bedrooms
- Access to major road links A4/M4



Well-presented ground floor two bedroom garden flat ideally located within minutes of Chiswick Business Park and perfect for access to Gunnersbury station. The accommodation comprises of two double bedrooms, large reception room leading to dining area, separate fitted kitchen with appliances and modern bathroom with shower over bath. The property features a private rear garden.

Minimum Term: 12 months
Deposit Required: £2,423.08
Local Authority: Hounslow Council
Council Tax Band: D
EPC Rating: E



Chestertons Chiswick Lettings

155 Chiswick High Road
 Chiswick
 London
 W4 2DT
chiswick@chestertons.co.uk
 02087473133
chestertons.co.uk

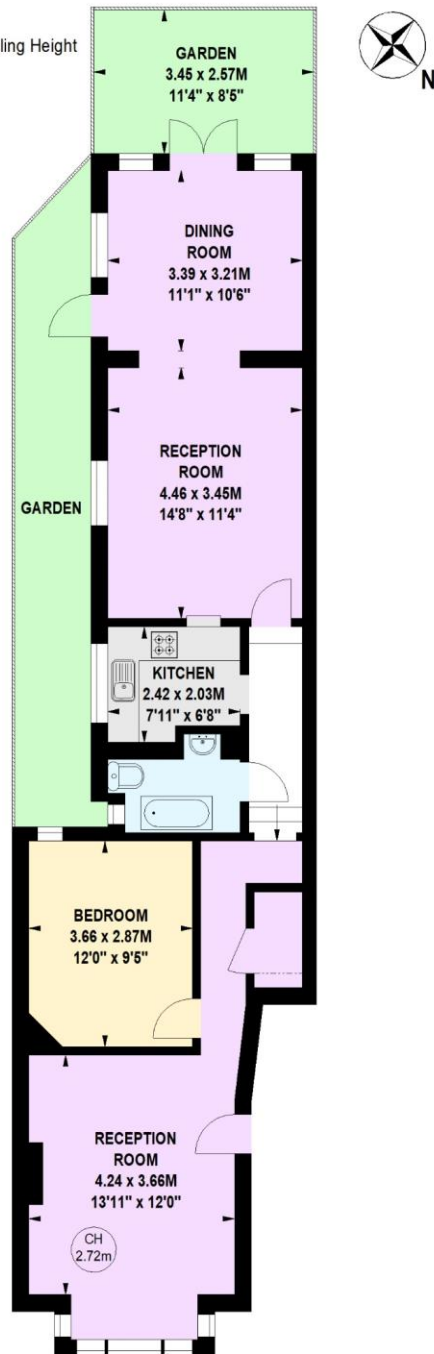
Additional tenant charges apply (fees apply to non-AST tenancies only)
 Tenancy Agreement Fee: £300
 References per Tenant/Guarantor: £60
 Inventory check (approx. £100 – £250 inc. VAT)
chestertons.co.uk/property-to-rent/applicable-fees

Thorney Hedge Road, W4

Approximate gross internal area

75.34 sq m / 811 sq ft

Key :
CH - Ceiling Height



Ground Floor

Not to scale, for guidance only and must not be relied upon as a statement of fact.
All measurements and areas are approximate only

