



Barrowgate Road

Chiswick, W4

£750 per week
(£3,250 pcm)

**** VIDEO TOUR AVAILABLE**** Chestertons are delighted to offer this 4/5 bedroom house located on this popular residential road in Chiswick. Ideally located on popular tree lined road with great access to the High Road.



Barrowgate Road

Chiswick, W4

- *** VIDEO TOUR AVAILABLE**
- 4/5 bedroom house located on this popular residential road in Chiswick
- 2 separate reception rooms both featuring wooden floors
- Large kitchen / diner which has been recently re-fitted
- EPC Rating: TBC



*** VIDEO TOUR AVAILABLE** AVAILABLE WITH ZERO DEPOSIT** Chestertons are delighted to offer this 4/5 bedroom house located on this popular residential road in Chiswick.

The accommodation has been recently refurbished and comprises, 2 separate reception rooms both featuring wooden floors, large kitchen / diner which has been recently re-fitted offering appliances include double fridge freezer and dishwasher. 4 good sized double bedrooms, modern shower room, 2nd bathroom with shower over bath and private rear garden.

Ideally located on popular tree lined road with great access to the High Road, Gunnersbury / Chiswick Park stations and major road links A4 / M4.

Tenure: To be advised
Unfurnished

Additional tenant charges apply (fees apply to non-AST tenancies only)
 Tenancy Agreement Fee: £300
 References per Tenant/Guarantor: £60
 Inventory check (approx. £100 – £250 inc. VAT)
chestertons.com/property-to-rent/applicable-fees

Energy Efficiency Rating		Current	Potential
Very energy efficient - lower running costs			
(92-100)	A		
AWAITING EPC			
(39-84)	E		
(21-38)	F		
(1-20)	G		
Not energy efficient - higher running costs.			
England, Scotland & Wales			EU Directive 2002/91/EC

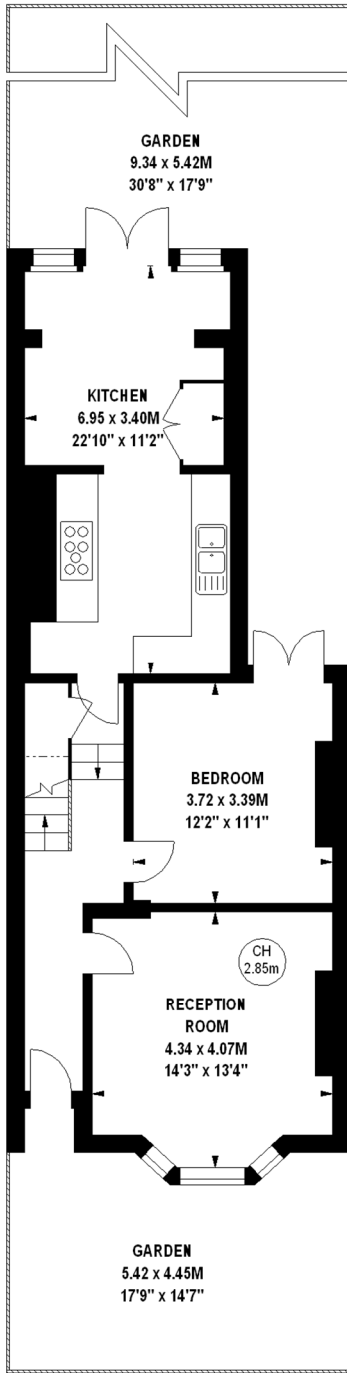
Chestertons Chiswick Lettings

155 Chiswick High Road
 Chiswick
 London
 W4 2DT
chiswick.lettings@chestertons.com
 02087473133
chestertons.com

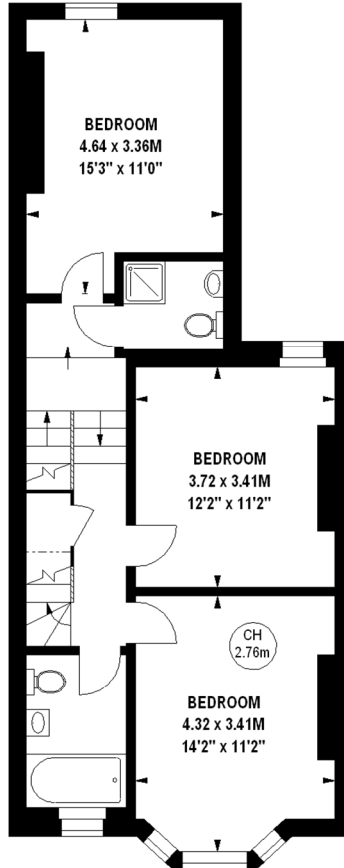
Barrowgate Road, W4

Approximate gross internal area

148.08 sq m / 1594 sq ft



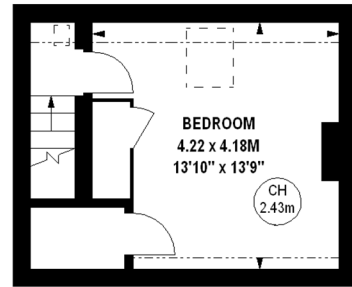
702 sq ft
Ground Floor



655 sq ft
First Floor



Key :
CH - Ceiling Height



237 sq ft
Second Floor

The floor plan is not to scale and measurements and areas shown are approximate and therefore should be used for illustrative purposes only. The plan has been prepared in accordance with the RICS code of Measuring Practice and whilst we have confidence in the information produced, it must not be relied on.

If there is any aspect of particular importance, you should carry out or commission your own inspection of the property.

Copyright of FeaturePRO.